

How to Fix Annoying Folder View Type Automatic Change Problem in Windows

<http://www.askvg.com/how-to-fix-annoying-folder-view-type-problem-in-windows-vista/>

One of the most annoying problems in Windows Vista and later Windows versions is the automatic change of a folder view type. Imagine a situation when you set a desired view type of a folder (such as large icons, list, details, etc) and after some time Windows automatically changes its view type to "Pictures and Videos" or any other view type when you copy a picture or video file to this folder.

Its a very common problem in Windows Vista and later OS which almost all Windows users are facing. Actually it happens because of "**Automatic Folder Type Discovery**" feature which was introduced in Windows Vista but instead of making something good, this feature has made the life of Windows users worst as Windows doesn't remember your customized view types for folders and automatically resets the view type based on folder content.

But now no need to worry, there is a registry trick to fix this annoying problem. This trick will reset the view settings of all folders and then it'll completely disable the automatic folder type discovery feature, so you'll not face this problem any more and Windows will always remember your customized view type settings for all folders.

So follow these simple steps to fix this problem:

1. Type **regedit** in RUN or Start search box and press Enter. It'll open Registry Editor.
2. Now navigate to following key:

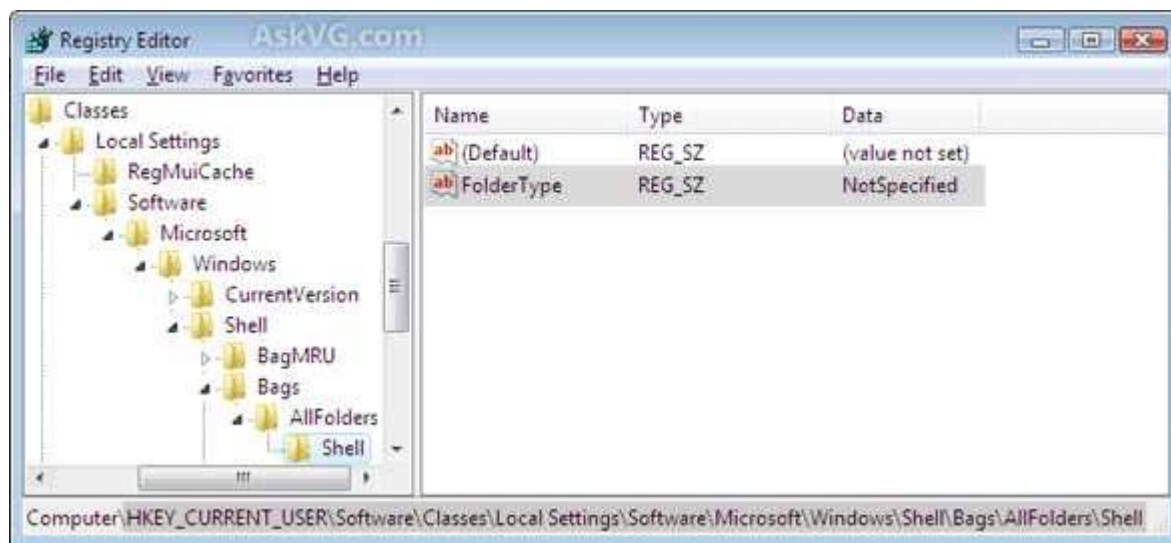
```
HKEY_CURRENT_USER\SOFTWARE\Classes\Local Settings\Software\Microsoft\Windows\Shell
```

3. Under "**Shell**" key, select "**Bags**" key and press "**Delete**" key. It'll ask for confirmation, click on Yes button.
4. Now right-click on "**Shell**" key and select "**New -> Key**" option. Set the name of new key as **Bags**
5. Now right-click on "**Bags**" key and select "**New -> Key**" option. Set the name of new key as **AllFolders**
6. Again right-click on "**AllFolders**" key and select "**New -> Key**" option. Now set the name of new key as **Shell**

So the final key path will be:

```
HKEY_CURRENT_USER\SOFTWARE\Classes\Local Settings\Software\Microsoft\Windows\Shell\Bags\AllFolders\Shell
```

7. Now click on this new "**Shell**" key and in right-side pane, create a new **String value** and give it name as **FolderType** and set its value to **NotSpecified**



8. That's it. Either restart your system or log off and now Windows will no longer forget or automatically change your customized folder view type settings.

NOTE 1:

If you are not familiar with Registry editing tasks and want a ready-made Registry script to do the task automatically, download following Zip file, extract it and run the extracted REG file. It'll ask for confirmation, accept it:

Registry Script to Fix Folder View Type Problem in Windows:

Windows Registry Editor Version 5.00

;This registry script has been made by Vishal Gupta for AskVG.com

```
[-HKEY_CURRENT_USER\Software\Classes\Local Settings\Software\Microsoft\Windows\Shell\Bags]
```

```
[HKEY_CURRENT_USER\Software\Classes\Local Settings\Software\Microsoft\Windows\Shell\Bags]
```

```
[HKEY_CURRENT_USER\Software\Classes\Local
```

```
Settings\Software\Microsoft\Windows\Shell\Bags\AllFolders]
```

```
[HKEY_CURRENT_USER\Software\Classes\Local
```

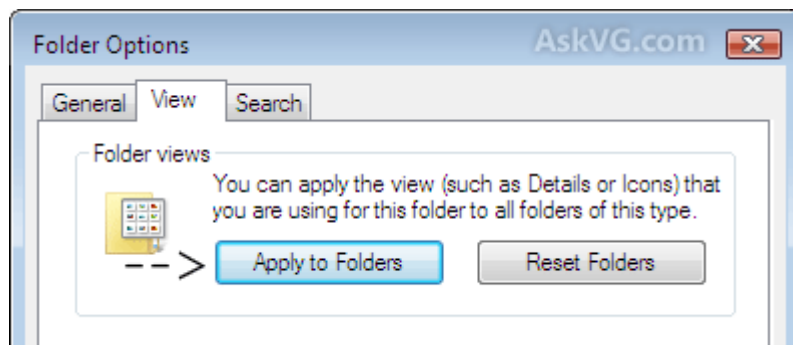
```
Settings\Software\Microsoft\Windows\Shell\Bags\AllFolders\Shell]
```

```
"FolderType"="NotSpecified"
```

NOTE 2:

If you want, you can apply same folder view settings to all folders using following steps:

1. In Windows Explorer, open any folder and customize its view type to your desired view such as large icons or details, etc.
2. Now open **Folder Options** (from Tools menu in Windows XP, from Organize menu in Windows Vista and 7, from Ribbon -> View in Windows 8 and later).
3. Go to **View** tab in Folder Options and click on "**Apply to Folders**" button.



That's it. It'll immediately apply current folder view type settings to all folders in your computer.