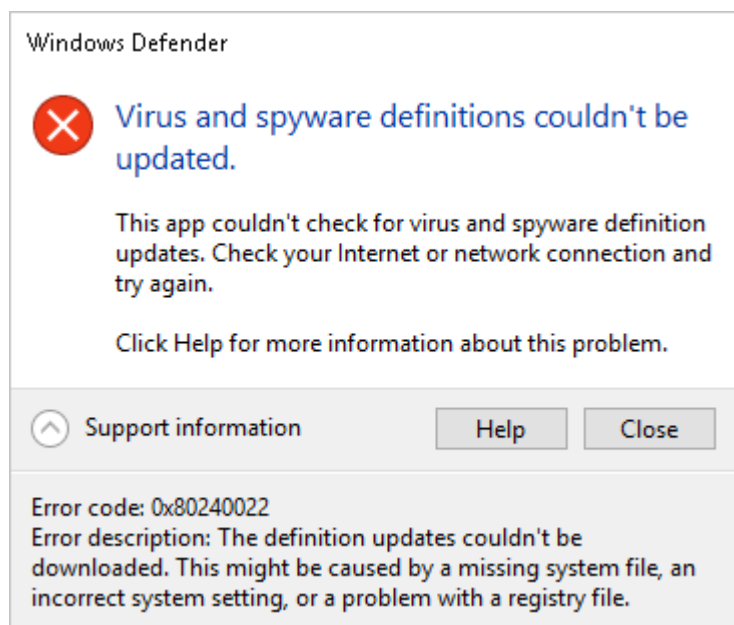


Methods to Fix & Solve Error 0x80240022 Windows Code Problem Issue

<https://www.techinpost.com/error-0x80240022-windows-code/>

Using an unstable version of Windows 10 may give you specific errors as the unstable version is very much prone to bugs, bad performance, and bad user experience. Among these error 0x80240022 Windows. We will be talking more about this strange-looking code later in the guide. This error is generally related to updates, incorrect, irregular, or corrupted Windows registry files and misconfigured system files.

Further, this error can also be seen during the windows defender program. Today in this error 0x80240022 windows solving guide, we will be talking about its causes, and we will be giving you some methods. These methods will surely fix the error 0x80240022 windows code problem.



Causes Behind Error 0x80240022 Windows Code Issue:

The error 0x80240022 windows code, which you see, is basically a hexadecimal code. This hexadecimal code helps in identifying the [root](#) of the problem also indicates memory locations. This type of error 0x80240022 windows is only seen in Windows OS specific programs, drivers, and vendor files. Now let's take a look at a few of its major causes.

- Misconfigured Windows Registry files
- Corrupted Windows System Files
- Temporary Files interfering with the services
- Incorrectly configured system settings
- Recent recovery from Adware, Malware or Spyware
- Using Unstable Windows Version

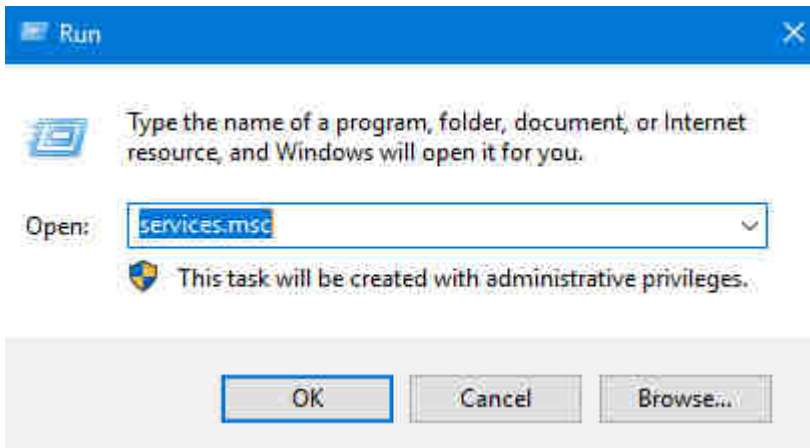
How to Fix & Solve Error 0x80240022 Windows Code Issue

Now let's see some of the methods by which you can get rid of this error 0x80240022 windows. Follow each method carefully to avoid further errors and instability in the system. All of the error 0x80240022 windows methods are found to be working in our knowledge. Let's go through them.

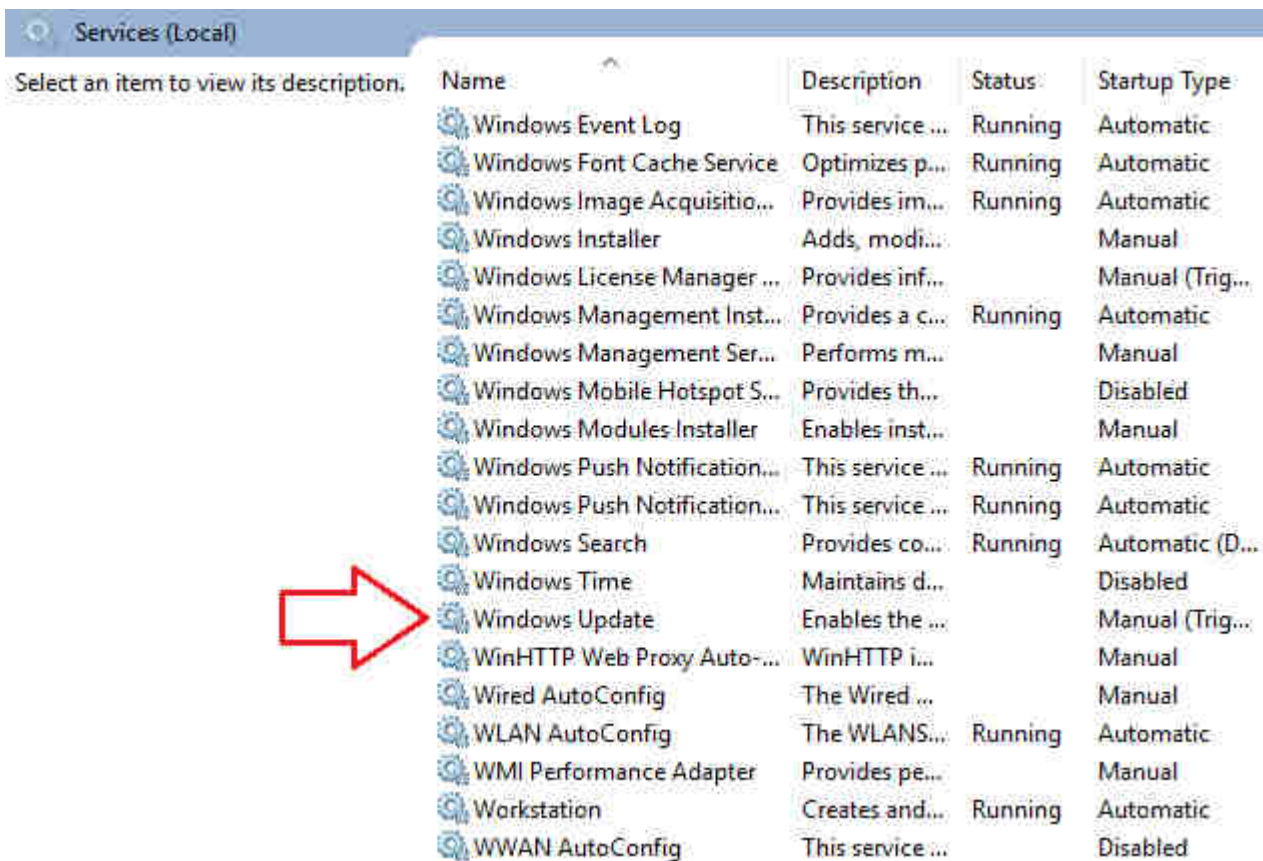
1. Clearing Temporary Files & Restarting Update Service –

In this result 0x80240022 windows 10 method, firstly, we will be manually stopping the services that are responsible for the windows update. Then we will clear the temporary files. And then we will restart the service.

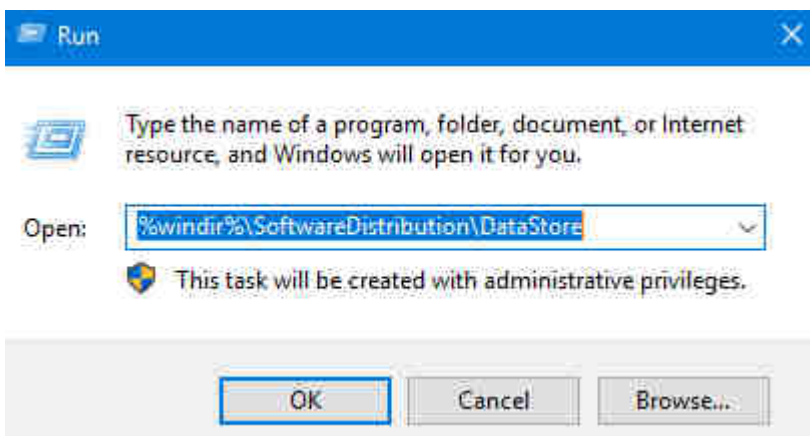
- STEP 1.** Click on **Start**, type **Run**, and Hit **Enter**
- STEP 2.** Type **services.msc** in the run and hit Enter



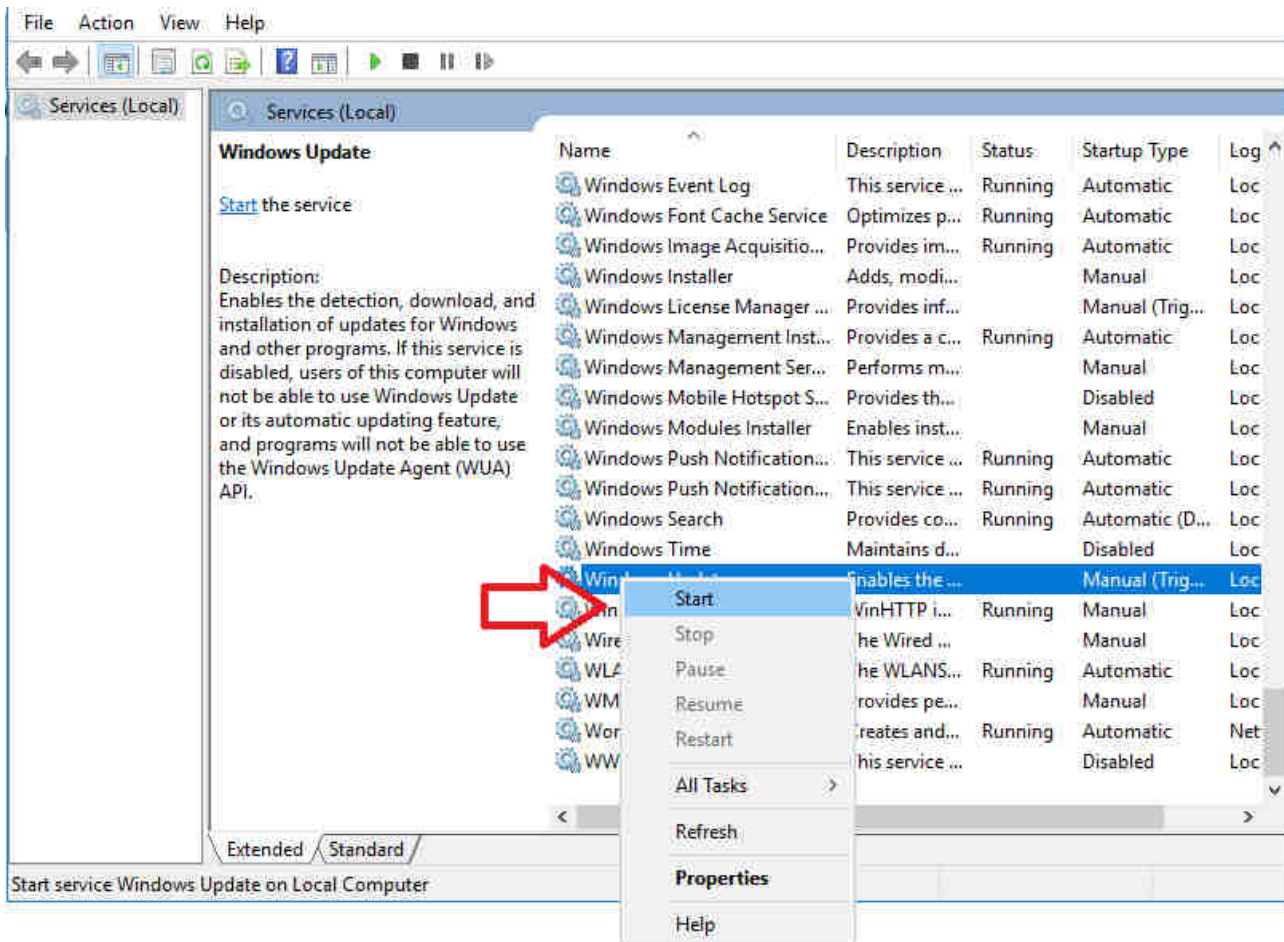
- **STEP 3.** Now scroll down to **Windows Update** Service



- **STEP 4.** Right Click on **Windows Update** and Click **Stop**
- **STEP 5.** Click on **Windows Start**, type **Run**, and Hit **Enter**
- **STEP 6.** Type **%windir%\SoftwareDistribution\DataStore**



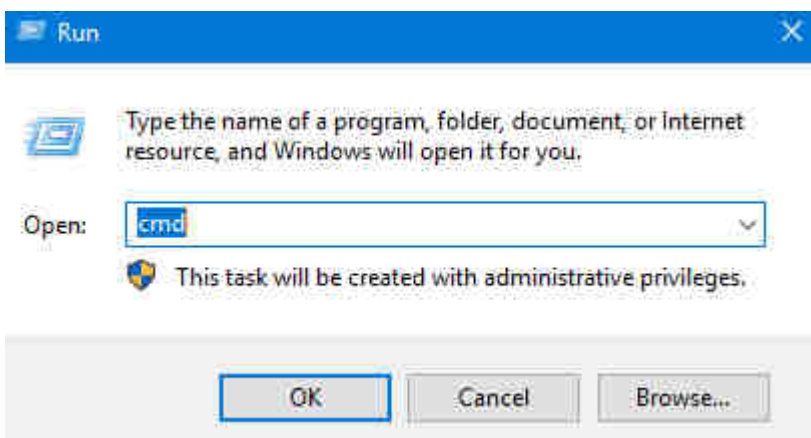
- ❑ **STEP 7.** Now **delete** all the contents of the folder
- ❑ **STEP 8.** Click on **Start**, type **Run**, and Hit **Enter**
- ❑ **STEP 9.** Type **services.msc** in the run and hit Enter
- ❑ **STEP 10.** Scroll down to **Windows Update** Service
- ❑ **STEP 11.** Right, Click on **Windows Update** and **Click Start** so that it will fix this error 0x80240022 Microsoft security essentials issue.



2. Using System File Checker (SFC) Utility –

If the error installation job encountered some failures error 0x80240022 windows 10 is still appearing, you should try this method. In this method, we will be using an inbuilt utility that will [check](#) and solve errors on the file system.

- ❑ **STEP 1.** Click on **Start**, type **Run**, and Hit **Enter**
- ❑ **STEP 2.** Type **cmd**, to enter into the command line



- ❑ **STEP 3.** Type the command **sfc /scannow**

```
Microsoft Windows [Version 10.0.17134.286]
(c) 2018 Microsoft Corporation. All rights reserved.

C:\WINDOWS\system32>sfc /scannow

Beginning system scan. This process will take some time.

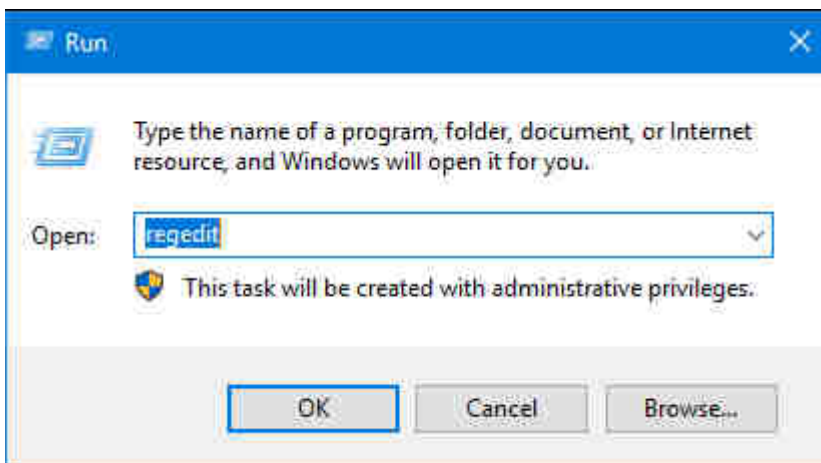
Beginning verification phase of system scan.
Verification 95% complete.■
```

- ❑ **STEP 4.** Wait until the process finishes
- ❑ **STEP 5.** Restart your System & it will solve the call error code 0x80240022 windows.

3. Using Registry Editor –

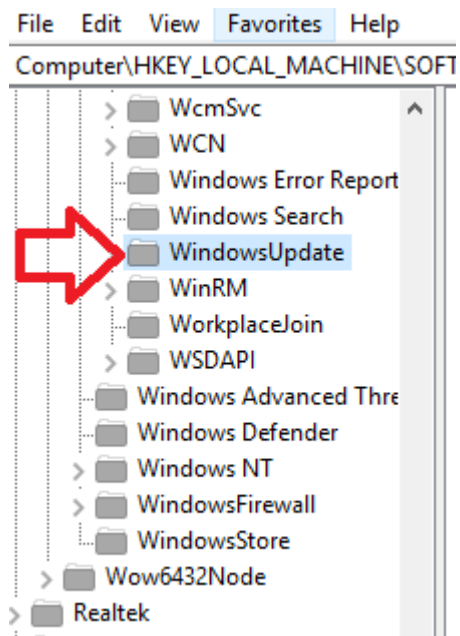
In this error code 0x80240022 windows 8 method, we will try to solve the error using [registry](#) files. We will try to alter the registry file. Please be aware of following each step properly when using the registry editor.

- ❑ **STEP 1.** Click on **Start**, type **Run**, and Hit **Enter**
- ❑ **STEP 2.** Type **regedit** and hit **Enter**



- ❑ **STEP 3.** Navigate to

HKEY_LOCAL_MACHINE\SOFTWARE\Policies\Microsoft\Windows\WindowsUpdate

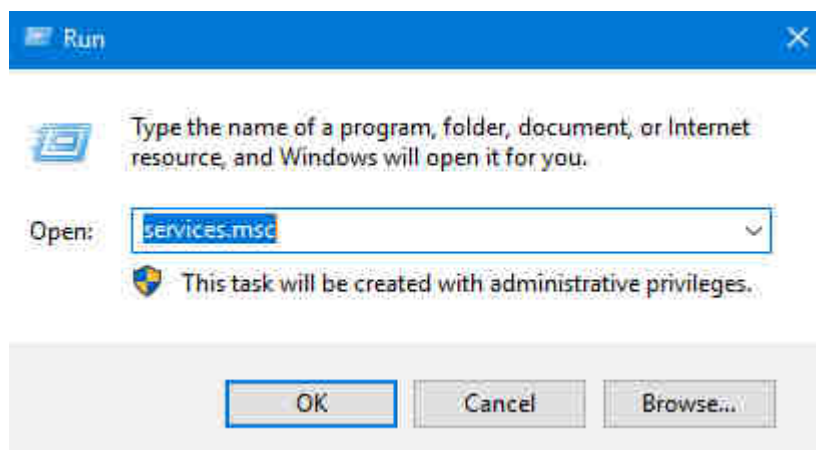


- STEP 4.** Delete **WUService** and **WUStatusServer**
- STEP 5.** Restart your system so that it will solve this error 0x80240022 windows 10 problem.

4. Altering Services (Windows Defender) –

In this method, we will solve this error using [services](#). Earlier it was for windows update. This time it is for windows defender. When you try to update windows defender, you get this error. Follow the steps to get rid of this windows update error 0x80240022 code.

- STEP 1.** Click on **Start**, type **Run**, and Hit **Enter**
- STEP 2.** Type **services.msc** in the run and hit Enter



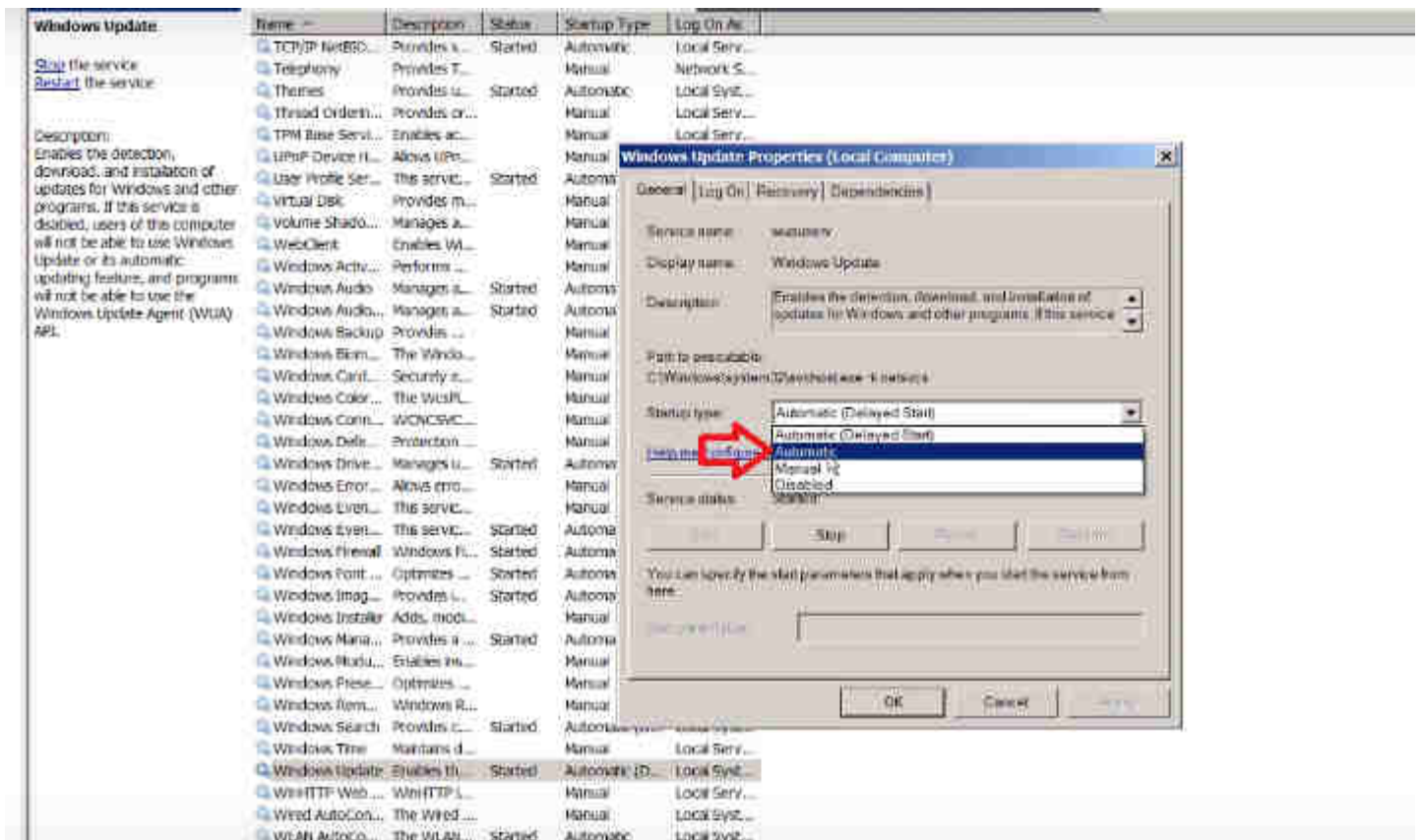
- STEP 3.** Now scroll down to **Security Center Service**

Security Center		Name	Description	Status	Startup Type	Log On As
Stop the service Restart this service	Description: The WSCSVC (Windows Security Center) service monitors and reports security health settings on the computer. The health settings include firewall (on/off), antivirus (on/off/out of date), antispamware (on/off/out of date), Windows Update (automatically/manually download and install updates), User Account Control (on/off), and Internet settings (recommended/not recommended). The service provides COM APIs for independent software vendors to register and record the state of their products to the Security Center service. The Action Center (AC) UI uses the service to provide systay alerts and a graphical view of the security health states in the AC control panel. Network Access Protection (NAP) uses the service to report the security health states of clients to the NAP Network Policy Server to make network quarantine decisions. The service also has a public API that allows external consumers to programmatically retrieve the aggregated security health state of the system.	Remote Registry	Enables re...		Manual	Local Serv...
		Routing and R...	Offers routi...		Disabled	Local Syst...
		RPC Endpoint ...	Resolves R...	Started	Automatic	Network S...
		RunSrvSE		Started	Automatic	Local Syst...
		SANSUNG Mob...		Started	Automatic	Local Syst...
		Secondary Log...	Enables sta...		Manual	Local Syst...
		Secure Socket ...	Provides s...		Manual	Local Serv...
		Security Accou...	The startu...	Started	Automatic	Local Syst...
		Security Center	The WSCS...	Started	Automatic (D...	Local Serv...
		Server %	Supports fl...	Started	Automatic	Local Syst...
		Shell Hardware ...	Provides n...	Started	Automatic	Local Syst...
		Smart Card	Manages e...		Manual	Local Serv...
		Smart Card Re...	Allows the ...		Manual	Local Syst...
		SNMP Trap	Receives tr...		Manual	Local Serv...
		Software Prote...	Enables th...		Automatic (D...	Network S...
		SPP Notificatio...	Provides S...		Manual	Local Serv...
		SSDP Discovery	Discovers ...	Started	Manual	Local Serv...
		Storage Service	Enforces g...		Manual	Local Syst...
		Superfetch	Maintains a...	Started	Automatic	Local Syst...
		System Event ...	Monitors s...	Started	Automatic	Local Syst...
		Tablet PC Inpu...	Enables Ta...		Manual	Local Syst...
		Task Scheduler	Enables it u...	Started	Automatic	Local Syst...
		TCP/IP NetBIO...	Provides s...	Started	Automatic	Local Serv...
		Telephony	Provides T...		Manual	Network S...
		Themes	Provides u...	Started	Automatic	Local Syst...
		Thread Orderm...	Provides or...		Manual	Local Serv...
		TPM Base Serv...	Enables ac...		Manual	Local Serv...
		UPnP Device H...	Allows UPn...		Manual	Local Serv...
		User Profile Ser...	This servi...	Started	Automatic	Local Syst...
		Virtual Desk	Provides m...		Manual	Local Syst...
		Volume Shado...	Manages a...		Manual	Local Syst...
		WebClient	Enables WL...		Manual	Local Serv...
		Windows Activ...	Performs ...		Manual	Local Syst...
		Windows Audio	Manages a...	Started	Automatic	Local Serv...
		Windows Audio...	Manages a...	Started	Automatic	Local Syst...

- **STEP 4.** Right Click on **Security Center** and Click **Restart**
- **STEP 5.** Scroll down to **Windows Update** Service

Services (Local)				
Select an item to view its description.				
Name	Description	Status	Startup Type	
Windows Event Log	This service ...	Running	Automatic	
Windows Font Cache Service	Optimizes p...	Running	Automatic	
Windows Image Acquisitio...	Provides im...	Running	Automatic	
Windows Installer	Adds, modi...		Manual	
Windows License Manager ...	Provides inf...		Manual (Trig...	
Windows Management Inst...	Provides a c...	Running	Automatic	
Windows Management Ser...	Performs m...		Manual	
Windows Mobile Hotspot S...	Provides th...		Disabled	
Windows Modules Installer	Enables inst...		Manual	
Windows Push Notification...	This service ...	Running	Automatic	
Windows Push Notification...	This service ...	Running	Automatic	
Windows Search	Provides co...	Running	Automatic (D...	
Windows Time	Maintains d...		Disabled	
Windows Update	Enables the ...		Manual (Trig...	
WinHTTP Web Proxy Auto-...	WinHTTP i...		Manual	
Wired AutoConfig	The Wired ...		Manual	
WLAN AutoConfig	The WLANS...	Running	Automatic	
WMI Performance Adapter	Provides pe...		Manual	
Workstation	Creates and...	Running	Automatic	
WWAN AutoConfig	This service ...		Disabled	

- **STEP 6.** Right Click on **Security Center** and Go to **Properties**
- **STEP 7.** Now Put Startup Type to **Automatic**



- **STEP 8.** Again Right Click on **Windows Update** and **Click Restart**
- **STEP 9. Reboot** Your System so that you will get rid of this Windows defender update error code 0x80240022 Microsoft security essentials.

Conclusion:

With this being the end of the solution guide on error **0x80240022** windows code. We hope you fix this error using the above methods. The error generally occurs in the windows update section and windows defender. We have covered both areas with suitable methods. In this error 0x80240022 windows solution guide, we have given all the ways in the form of step by step approach. Further possible error 0x80240022 windows causes have also been briefly mentioned.

We hope you like this error *0x80240022* windows solution guide.