

How to install Android ADB Driver manually

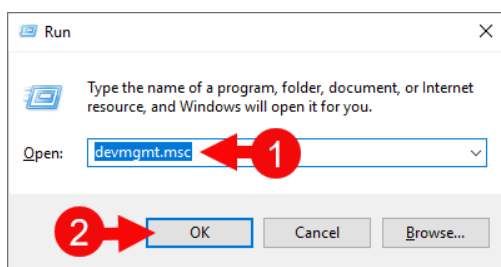
<https://gsmusbdriver.com/install-usb-driver>

These are the instructions to install Android ADB Driver on Windows Computer (this method can be used on Windows 7, Windows 8, 8.1, and Windows 10).

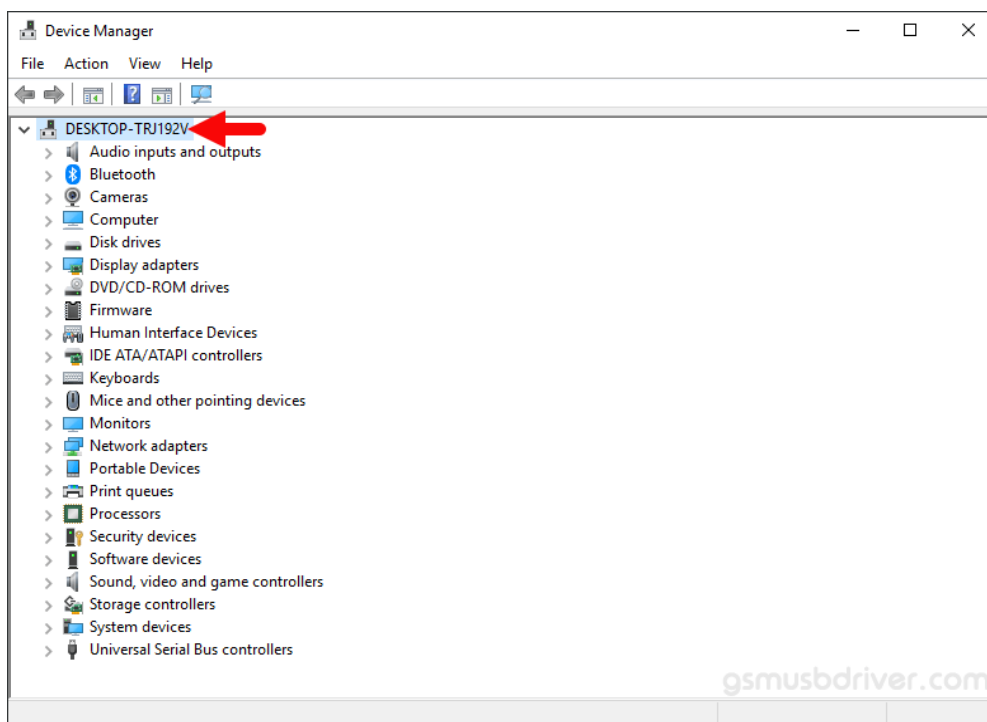
Requirements: You need to have the Windows Computer and the Android ADB Driver (.inf based) to follow the below guidelines.

Install Android ADB Driver (.inf) manually

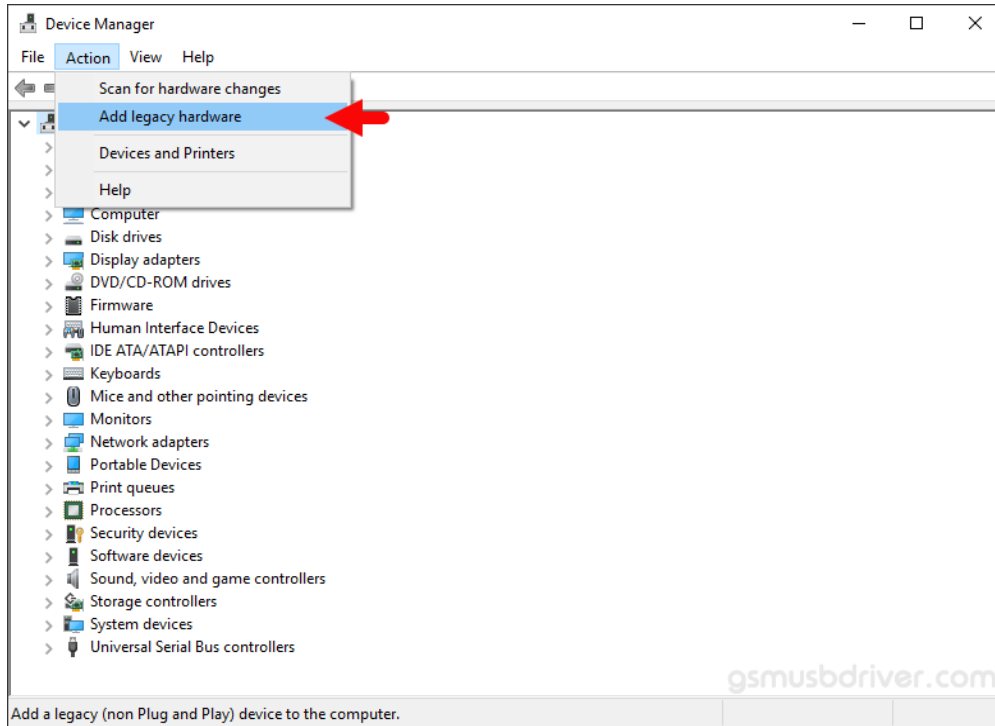
1. [Download](#) and **extract** Android ADB Driver (.inf based) on the Computer. If in case, you have already downloaded and extracted the driver, then SKIP this step.
(https://dl.google.com/android/repository/usb_driver_r13-windows.zip)
2. **Open Device Manager** on the Computer. Press **Win + R** key from the keyboard and type **devmgmt.msc** and Click on OK Button:



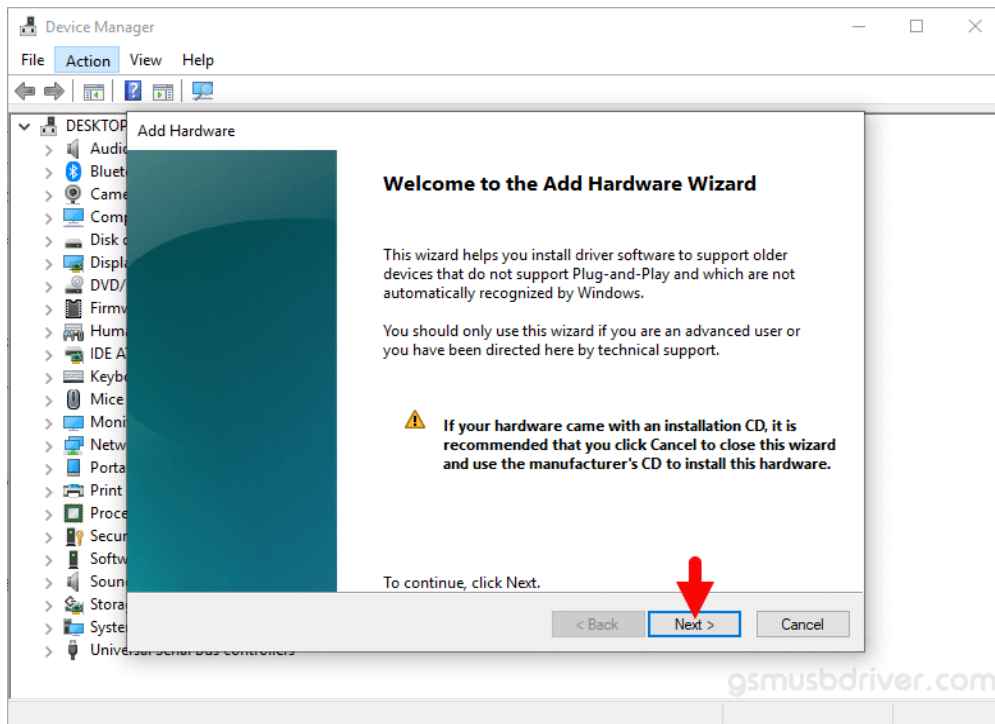
3. Once the Device Manager is Launched, **Click on the Computer Name** (name can vary from the image below):



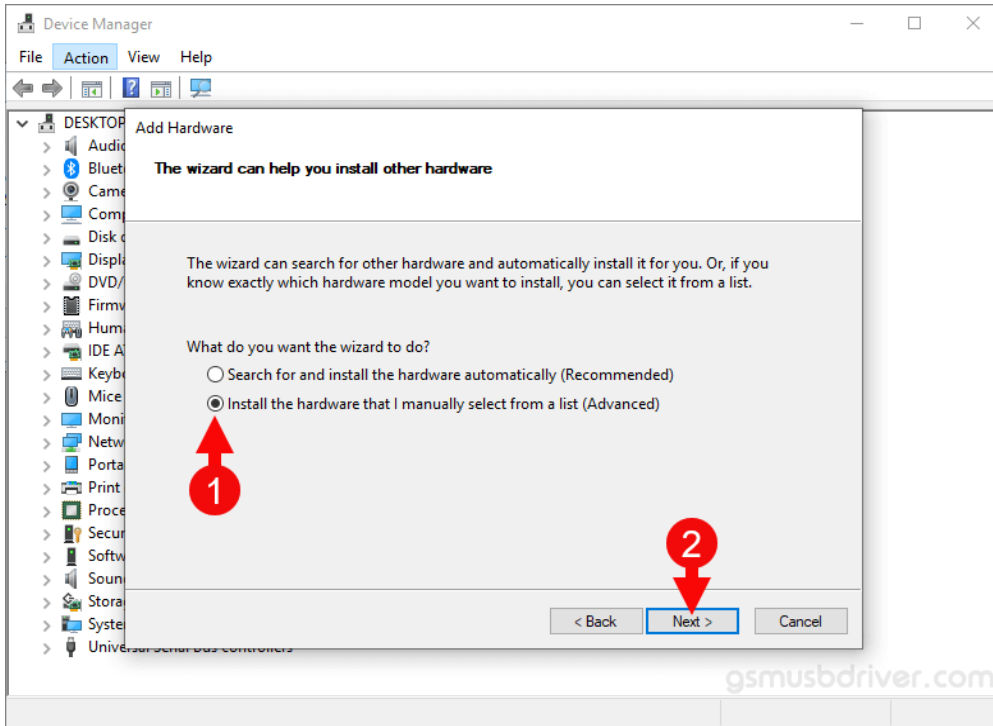
4. Click on the **Action** Menu and **Select** Add Legacy Hardware option:



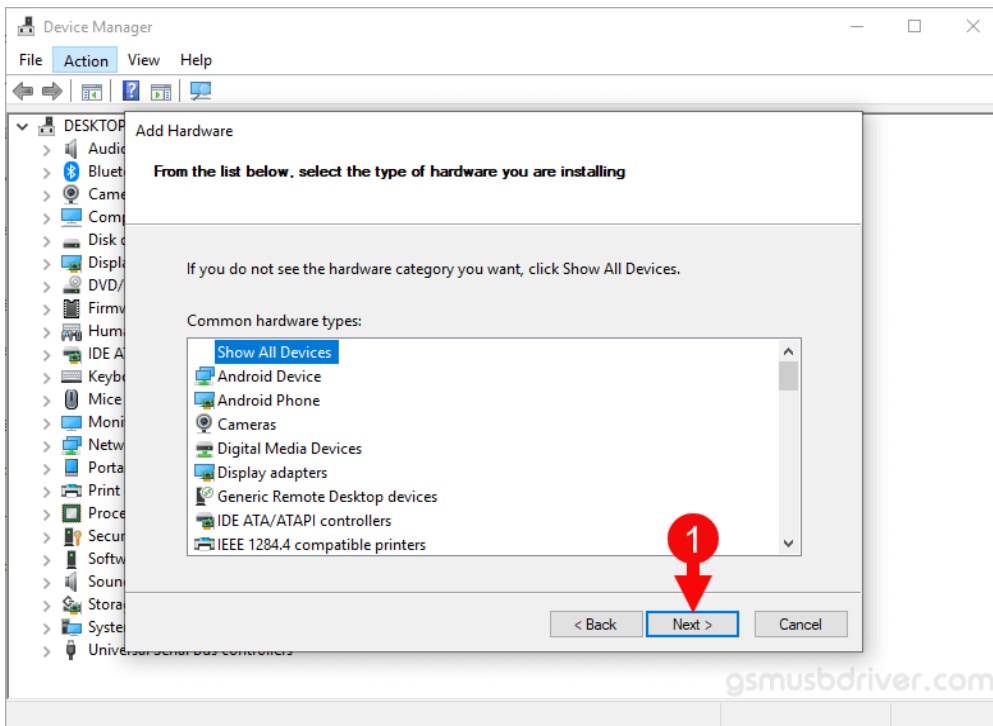
5. Under Add hardware Dialog Box, Click on the **Next** Button:



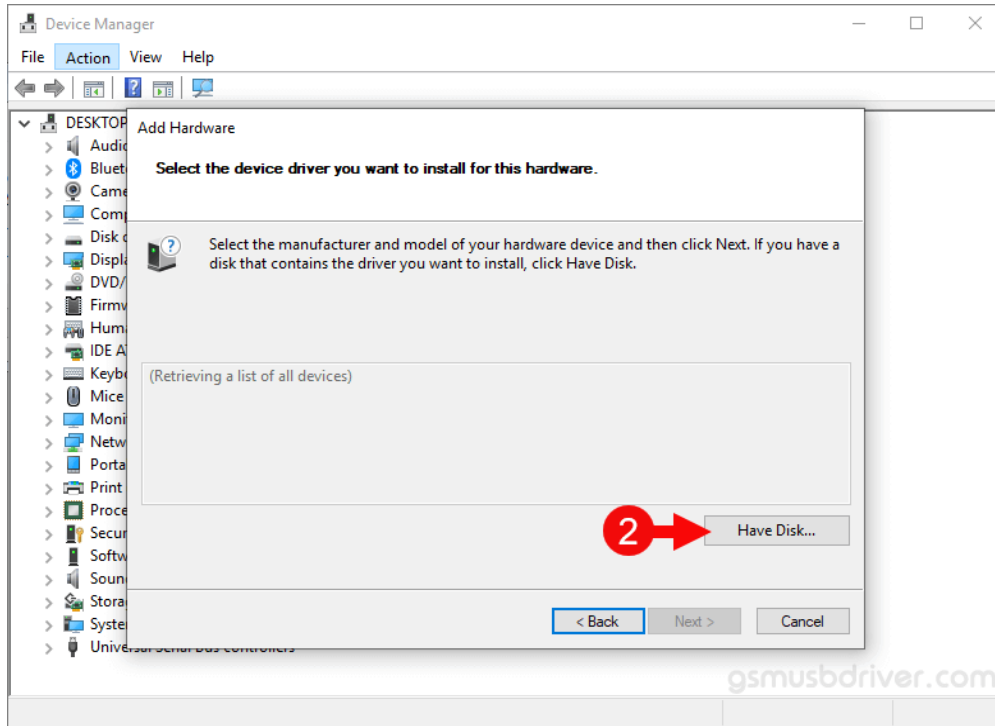
6. Tick on the **Install the hardware that I manually select from a list** checkbox and **Click on the Next Button**:



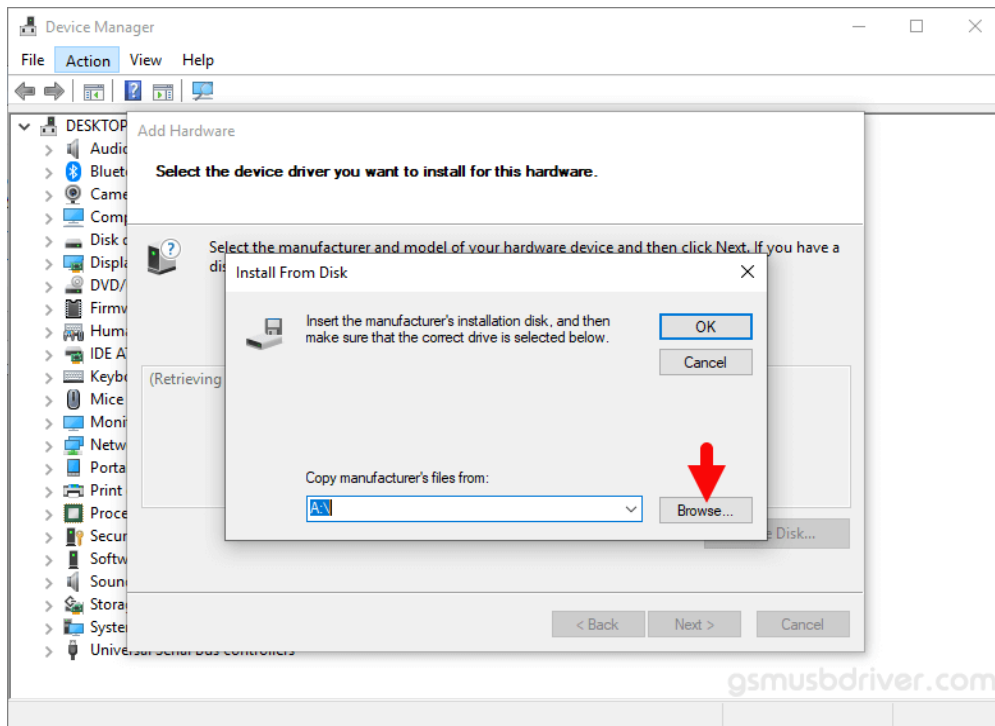
7. **Click on the Next Button**:



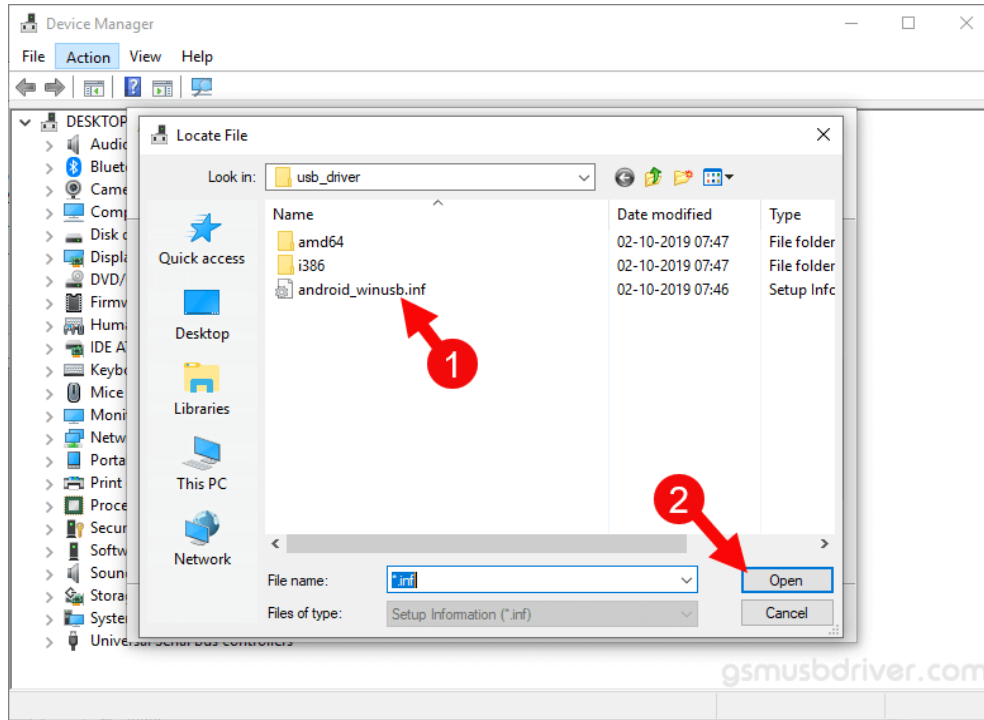
Then **Click on the Have Disk Button:**



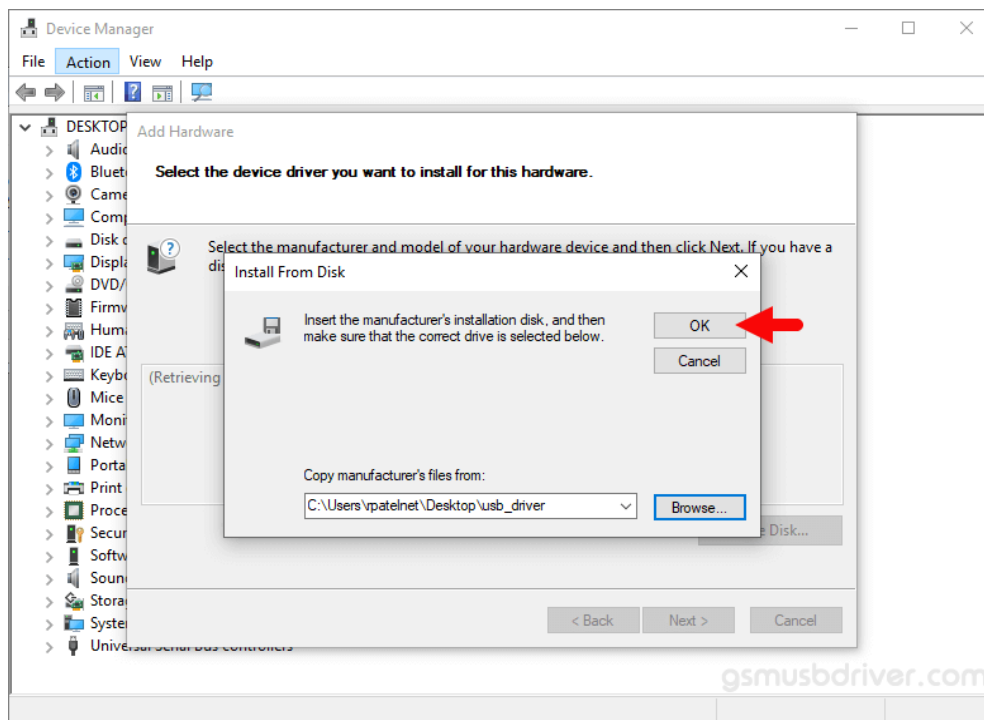
8. **Click on the Browse Button:**



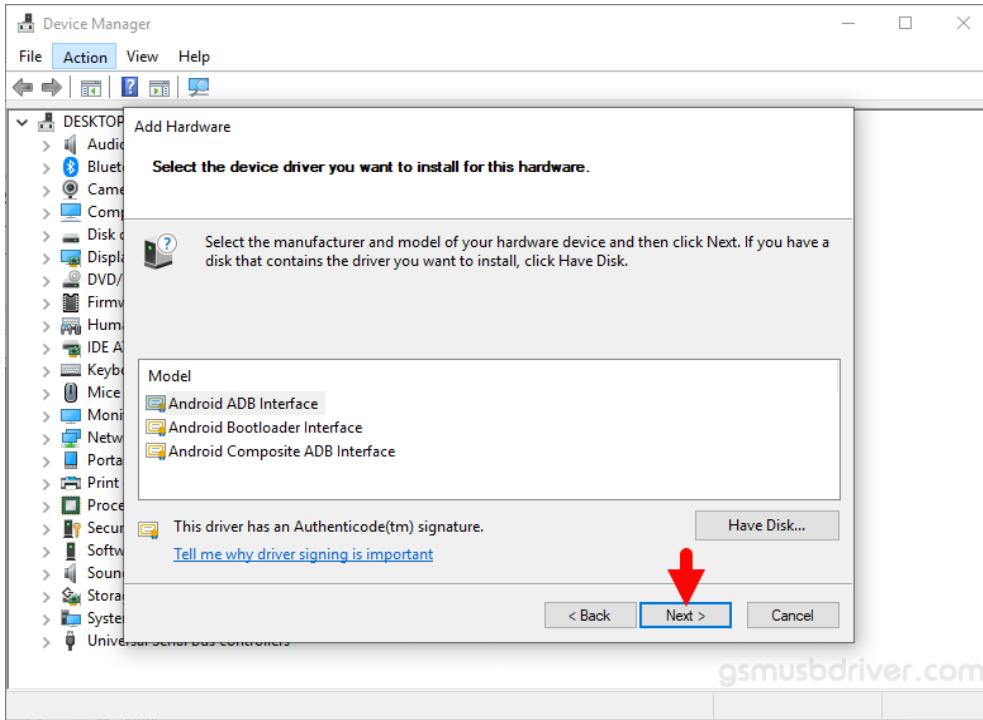
Locate the .inf file from the computer (this file can be found in the extracted driver folder).



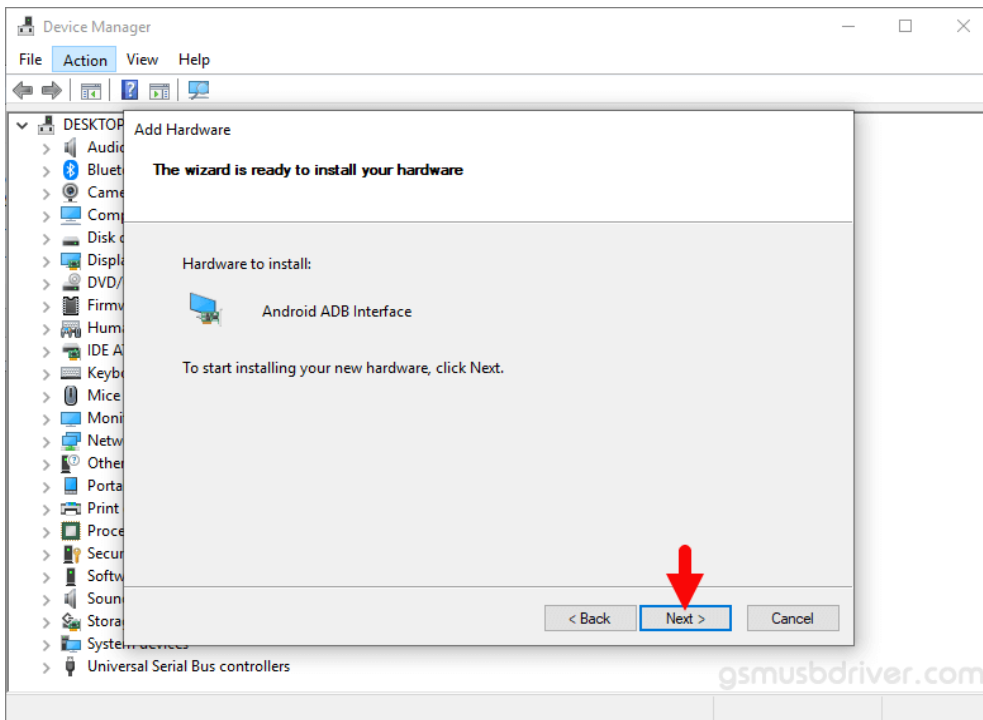
Click on the OK Button:



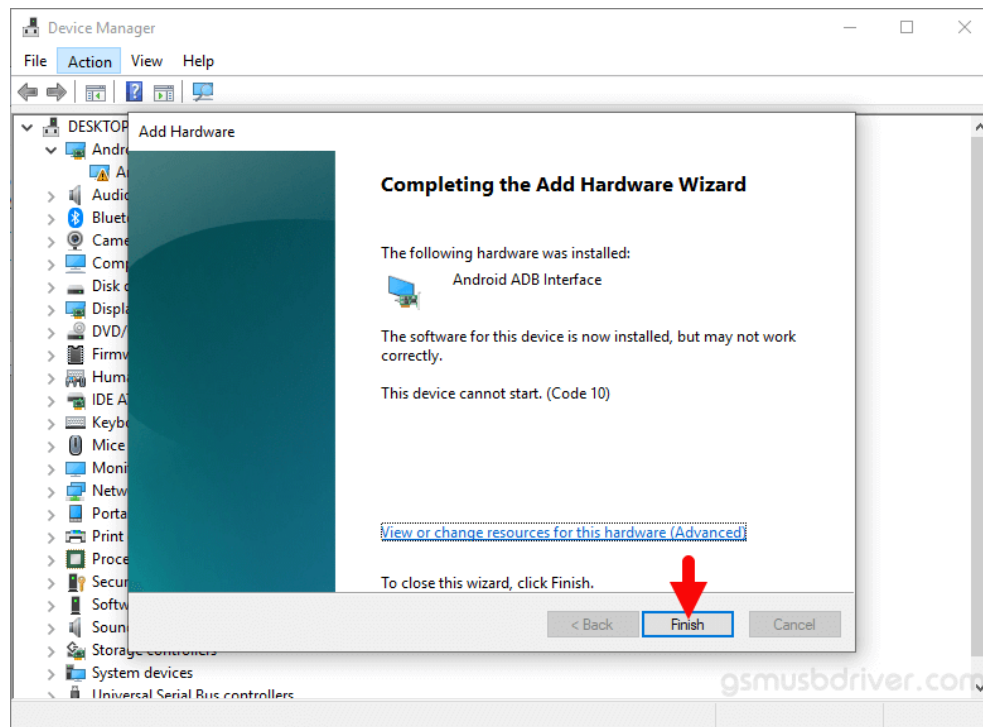
9. Click on the **Next** button:



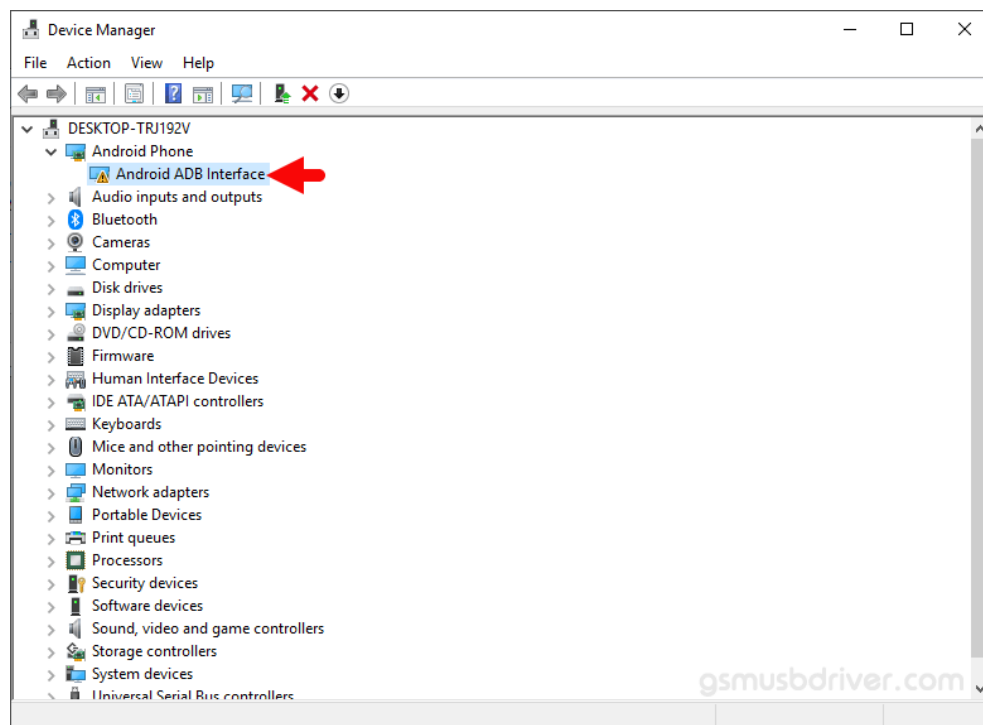
Again Click on the **Next** button:



Click on the **Finish** button to complete the installation process (ignore Code 10; it will be gone post restarting the computer).



Your driver is listed in the Device Manager.



Now, **Restart** the Computer. Once the computer is restarted, you can easily connect your Mobile device to the computer.

Readme Once:

[*] We have used the Android ADB Driver to create the above manual. If you wish, you can download the same driver from [here](#).

[*] **Driver Signature Error:** If you are facing Driver Signature Error while installing the USB Driver, then head over to [How to Fix Driver Signature Error](#) page.

[*] **Driver Easy:** We recommend you to use [Driver Easy](#) application to update all the computer drivers in a Single Click.

[*] **Credits:** ADB Driver is created and distributed by [Google](#). So, all credit goes to them for sharing the driver for free.