

# How To Set File App Association From Command Prompt On Windows 10

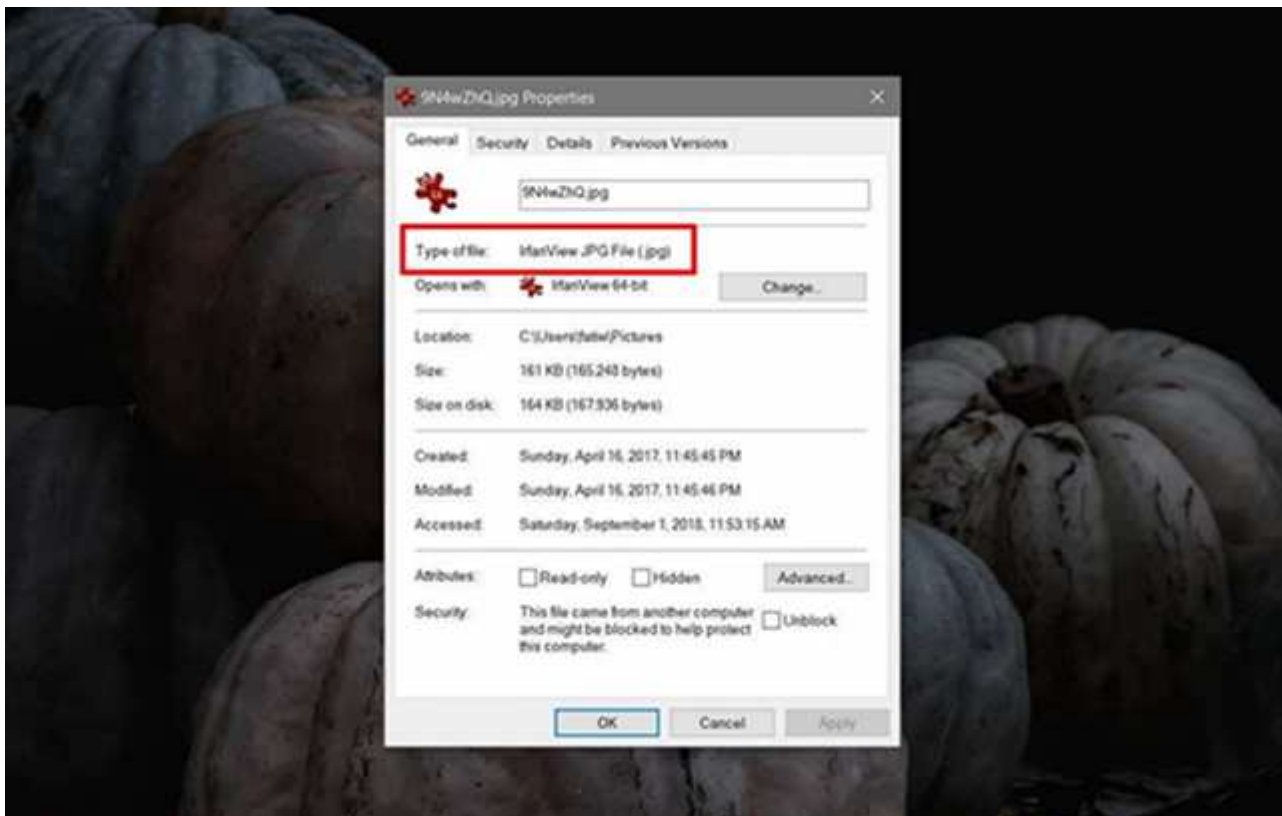
<https://www.addictivetips.com/windows-tips/file-app-association-command-prompt-windows-10/>

Windows 10 allows you to [set any app of your choice as the default app](#) to open a certain type of file. In some cases, e.g., with your browser, it will relentlessly try and push Edge as a superior option but with other file types and apps you don't run into much resistance. Of course, app defaults often reset and sometimes they fail to set altogether. If that's the case, you can always set a file app association from Command Prompt.

## File App Association

In order to set a file app association from the Command Prompt, you need administrative rights. The first thing you need to do is find the file extension for the file that you want to set a default app for. This is easy enough; open File Explorer to the location with the file in it.

Right-click the file and select Properties from the context menu. On the General tab, you will see a 'Type of File' section that tells you what the file's extension is.



Open Command Prompt with administrative rights and run the following command in it.

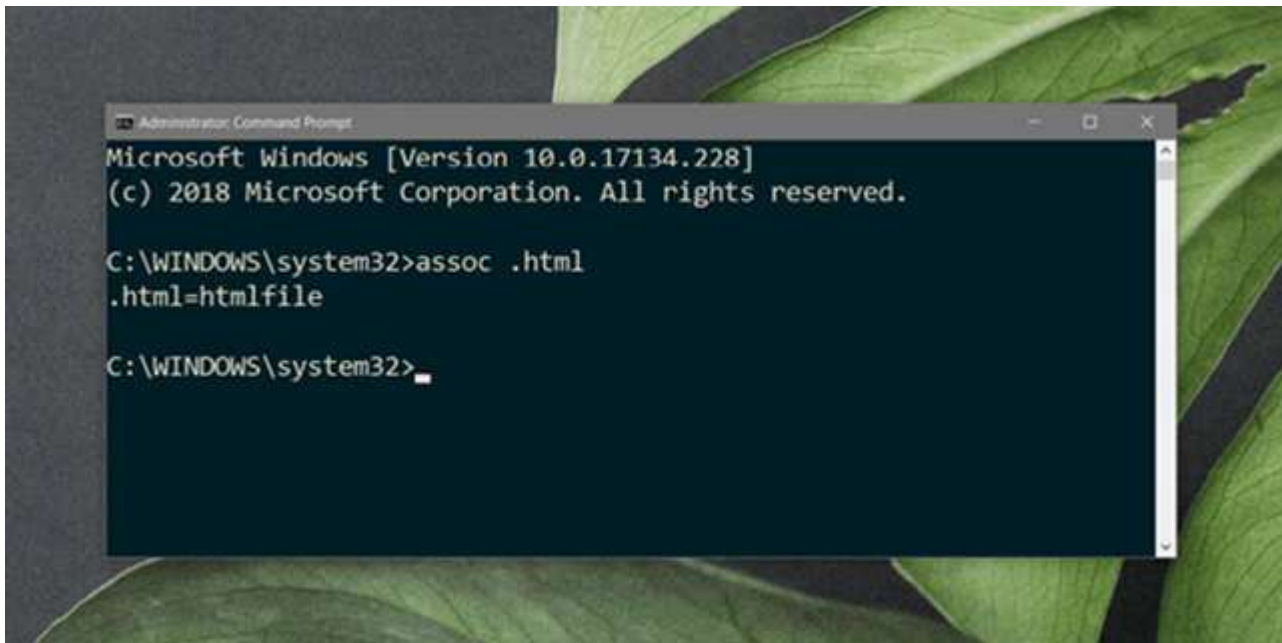
## Syntax

```
assoc .fileextension
```

## Example

```
assoc .html
```

This command will return the file type that the file is. This result is what you need to execute the command to set a file app association. In the screenshot below, the file type that the command has returned is "htmlfile".



```
Administrator: Command Prompt
Microsoft Windows [Version 10.0.17134.228]
(c) 2018 Microsoft Corporation. All rights reserved.

C:\WINDOWS\system32>assoc .html
.html=htmlfile

C:\WINDOWS\system32>
```

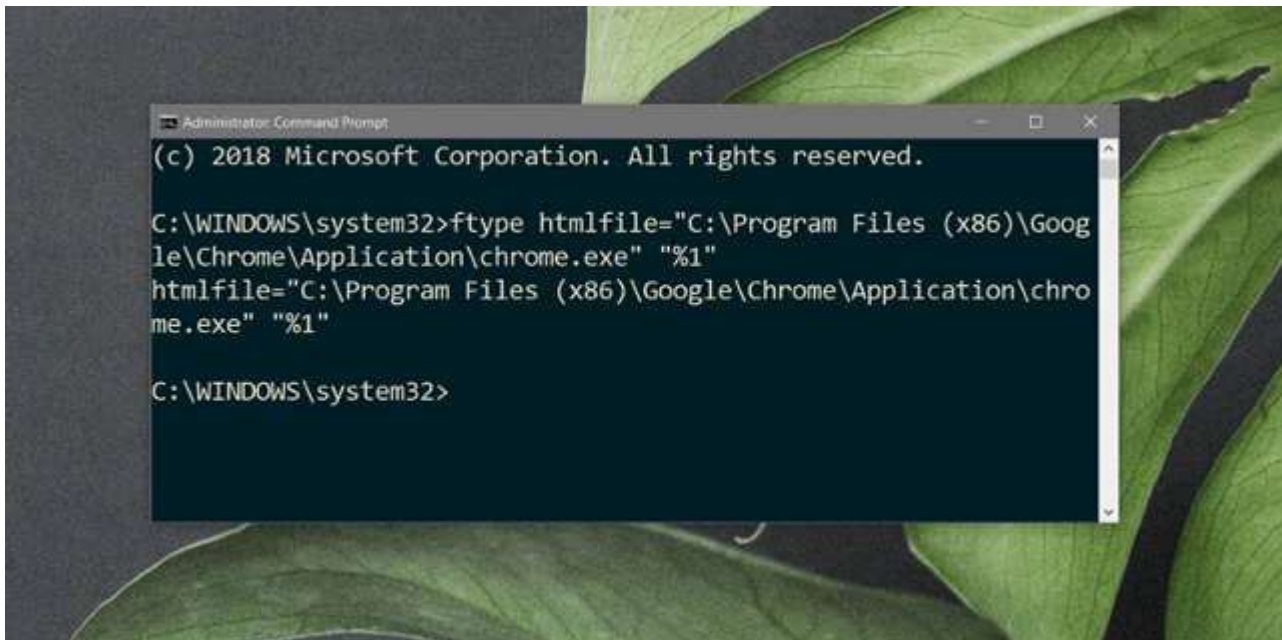
Next, find the absolute path to the EXE of the app you want to associate with the file type. Run the following command.

### Syntax

```
ftype File Type="absolute-path-to-application" "%1"
```

### Example

```
ftype htmlfile="C:\Program Files (x86)\Google\Chrome\Application\chrome.exe" "%1"
```



```
Administrator: Command Prompt
(c) 2018 Microsoft Corporation. All rights reserved.

C:\WINDOWS\system32>ftype htmlfile="C:\Program Files (x86)\Google\Chrome\Application\chrome.exe" "%1"
htmlfile="C:\Program Files (x86)\Google\Chrome\Application\chrome.exe" "%1"

C:\WINDOWS\system32>
```

If the file app association is set successfully, Command Prompt will return the following.

```
File Type="absolute-path-to-application" "%1"
```

From this point forward, Windows 10 will use the set app to open the type of file you associated with it. This method doesn't guarantee that the file association cannot be reset, or that no other apps can change it.

An error on Windows 10 may cause a file app association to reset. Likewise, if you install a new app that can also open the same file type, and set it as the default app for all such files, the file app association that you set will break.