

3 Methods to Windows Couldn't Connect to the Group Policy Client

<https://www.partitionwizard.com/partitionmanager/windows-couldnt-connect-to-the-group-policy-client.html>

Once you, as a standard user, try to login into Windows, an error message that Windows couldn't connect to the Group Policy Client service might be shown to you. Do you know how to fix it? Follow the tutorial from [MiniTool Partition Wizard](#). It introduces some methods for you.

- **Method 1: Set Group Policy Client Service to Automatic**
- **Method 2: Run SFC and DISM Scans**
- **Method 3: Fix the Registry Settings**

Group Policy Client service, also called GPSVC for short, is a Windows tool that can help to control the policies related to computer security and access restrictions.

If your Windows fails to connect to the Group Policy Client service, you cannot log in with a standard user account. While using an administrator account, you can log in to Windows successfully, but the same message will be shown in the notification bar.

Therefore, when you receive the message that Windows couldn't connect to the Group Policy Client service, you have to find ways to fix the issue. Below are some efficient methods for you. Please note all the methods require you to log in to your computer, so you must log in with [the administrative account](#).

Method 1: Set Group Policy Client Service to Automatic

When the GPSVC startup type is changed improperly, it can cause the issue that Windows couldn't connect to the GPSVC service. As for this, you need to set GPSVC to automatic.

Step 1: Press **Windows + R** keys to open the **Run** box.

Step 2: Type **services.msc** in the blank and click **OK** to enter the **Services** panel.

Step 3: Scroll down to find **Group Policy Client** and then double-right it to reach its properties window.

Note: You can also open the **Group Policy Client Properties** window by right-clicking it and selecting **Properties**.

Step 4: Choose **Automatic** from the **Startup types**, and click **Start** to start the service again if the service was stopped.

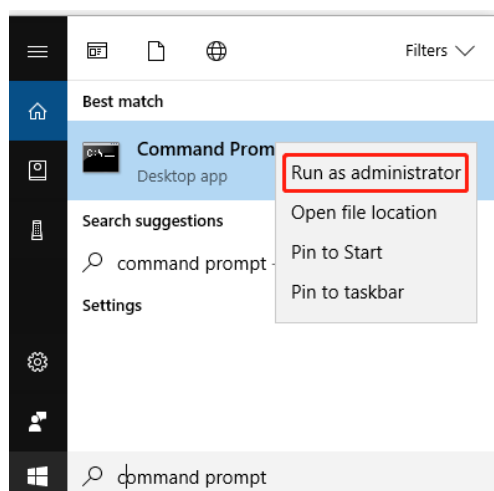
Step 5: Remember to click **Apply** and then **OK** to save the change.

After the operation, you should restart your computer and the Windows couldn't connect to the Group Policy Client issue will be resolved.

Method 2: Run SFC and DISM Scans

Something wrong with the system files on Windows may cause the issue that Windows could not connect to the Group Policy Client, too. To fix it, you can run both SFC and DISM scans to find and repair the corrupted files.

Step 1: Search for **Command Prompt** in the search bar and then right-click the **Command Prompt** from **Best match** to select **Run as administrator**.



Step 2: Type the following commands one by one, and press **Enter** after each to execute them.

- `sfc /scannow`
- `Dism /Online /Cleanup-Image /CheckHealth`
- `Dism /Online /Cleanup-Image /ScanHealth`
- `Dism /Online /Cleanup-Image /RestoreHealth`

Step 3: Reboot your computer after these commands are completed.

The issue that Windows couldn't connect to the Group Policy Client has been fixed.

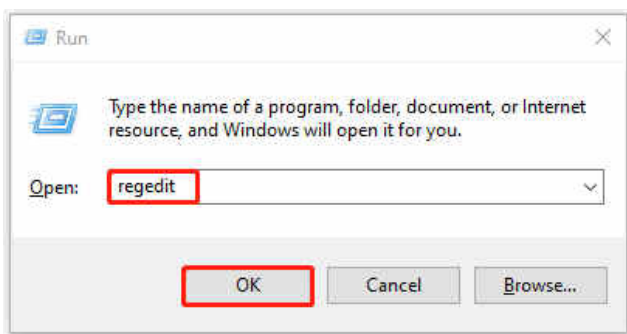
Method 3: Fix the Registry Settings

Using [Registry Editor](#) may fix the error that Windows couldn't connect to the Group Policy Client as well.

Note: In case any improper operation when fixing the registry settings affects your computer, you'd better [create a System Restore point](#) first.

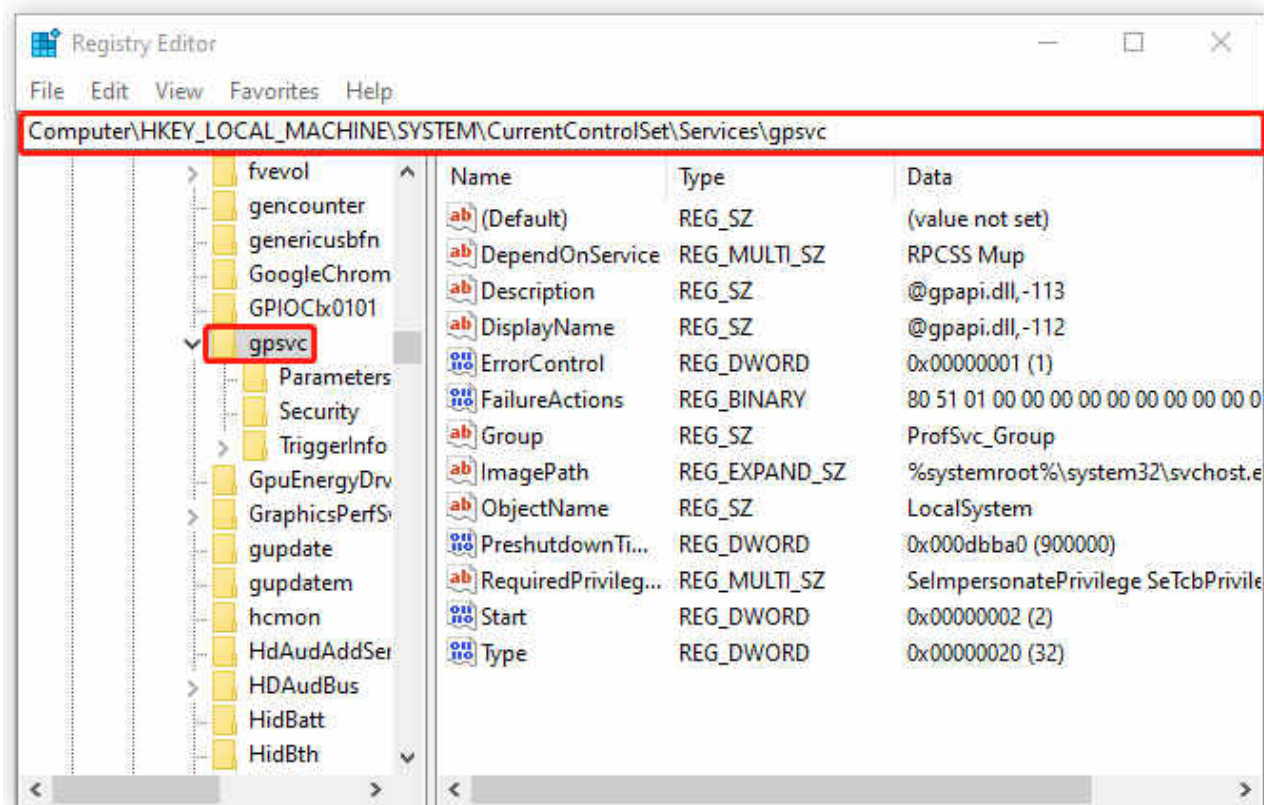
Step 1: Press **Windows + R** keys to open the **Run** box.

Step 2: Type **regedit** and then click **OK** or press **Enter** to open the **Registry Editor**.



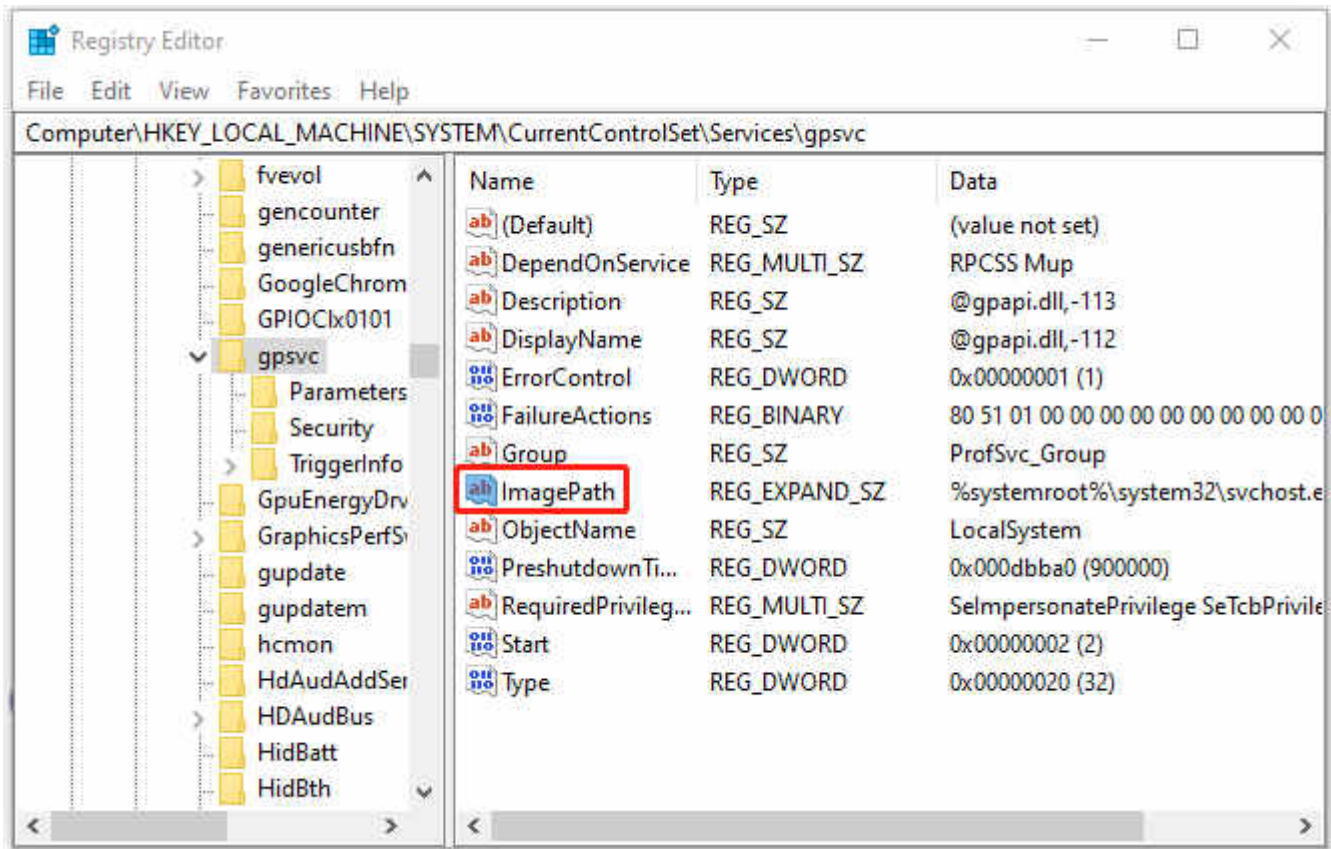
Step 3: Unfold the following contents to find **gpsvc**:

Computer\HKEY_LOCAL_MACHINE\SYSTEM\CurrentControlSet\Services\gpsvc

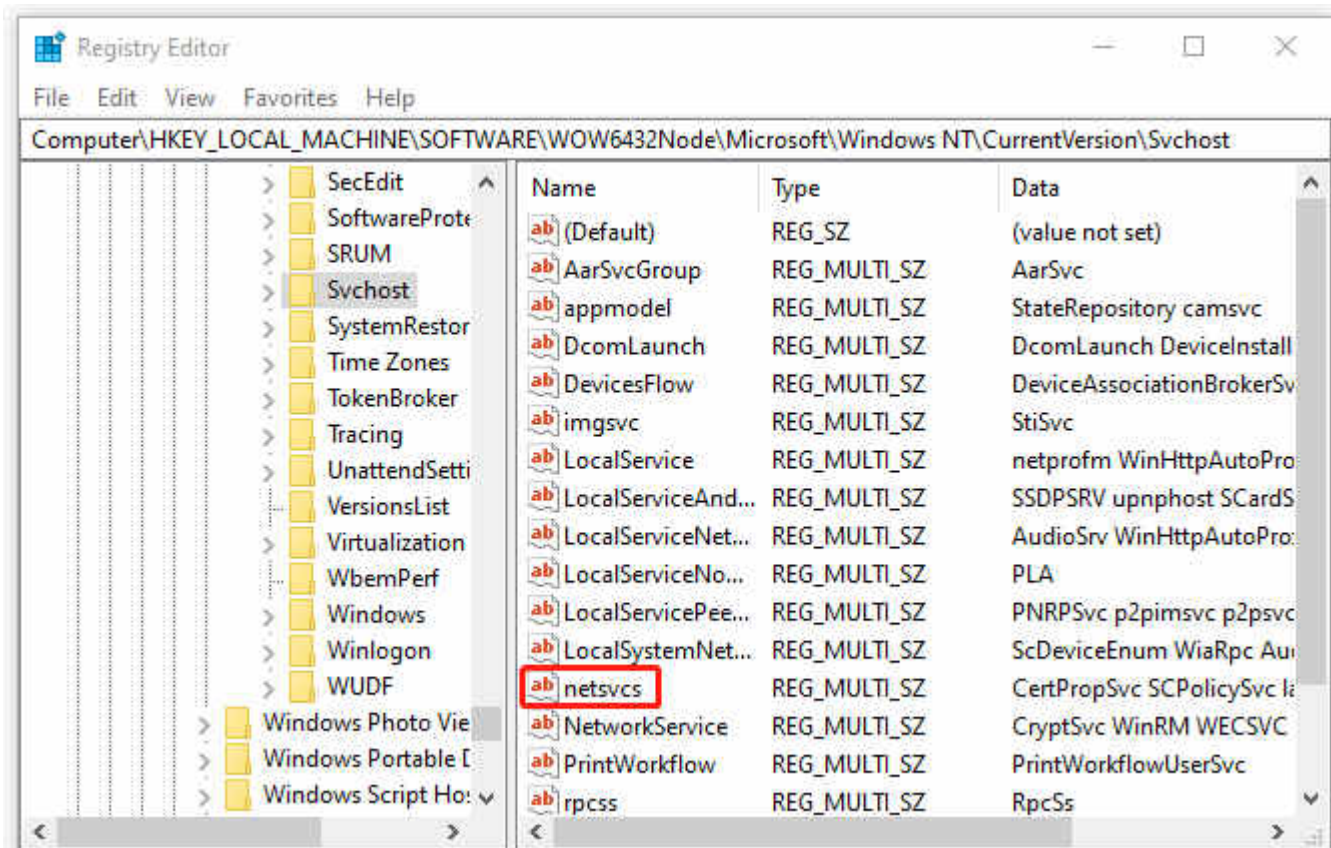


Step 4: Double-click **ImagePath** in the right pane to check its value data. The data is in charge GPSVC service.

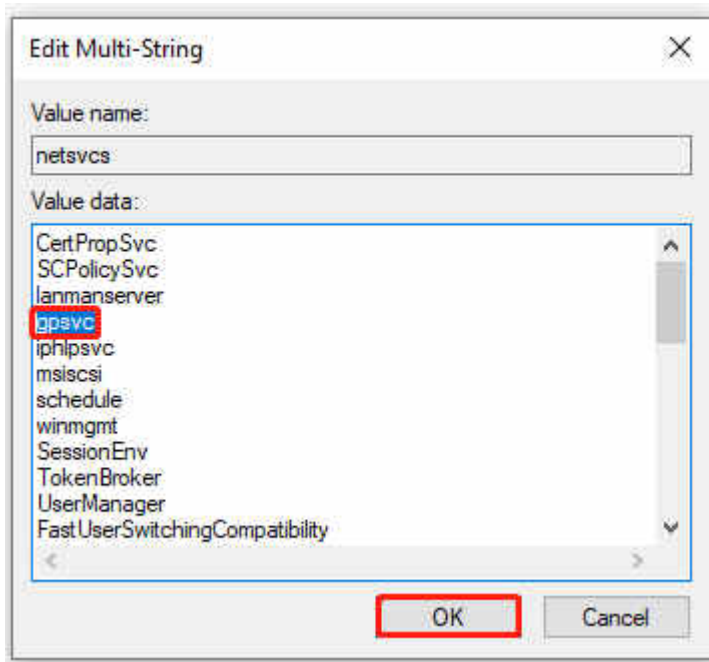
Note: In the tutorial, the value data is **svchost.exe -k netsvcs**. While you may see **svchost.exe -k GPSvcGroup** on your computer. If so, you need to modify **GPSvcGroup** rather than **netsvcs** after navigating to the **Svchost** path in the next step.



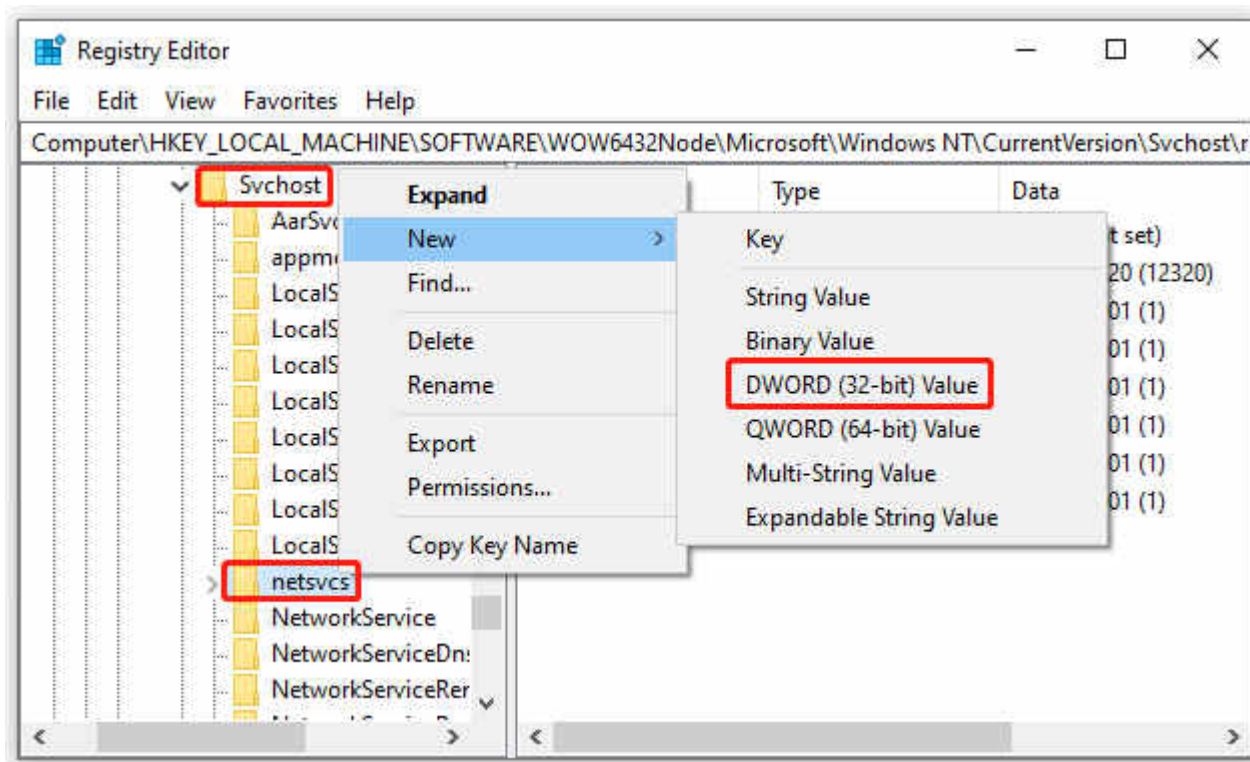
Step 5: Then navigate to the path: **Computer\HKEY_LOCAL_MACHINE\SOFTWARE\WOW6432Node\Microsoft\Windows NT\CurrentVersion\Svchost**. Double-click the **netsvcs** in the right pane to check the **Value data**.



Step 6: Make sure **gpsvc** is included in the **Value data**. If it misses, you need to add it carefully. Finally, click **OK**.



Step 7: Expand the **Svchost** folder at the left pane, and right-click **Netsvcs** below it. Then choose **New** to create **DWORD (32-bit) Value** named **AuthenticationCapabilities**. Set its value data as **12320** in decimal base. Next, create another **DWORD (32-bit) Value** named **CoInitializeSecurityParam** with **1** as its value data.



When all the steps above are completed, reboot your computer and the issue that Windows couldn't connect to the Group Policy Client is repaired.

There are three methods provided for you to fix the issue that Windows could not connect to the Group Policy Client. Try them when you meet the issue. Any comment can be left in our comment part if you still have questions about the issue.