

# Windows 11 ms-settings Commands (Settings URI Shortcuts)

<https://winaero.com/windows-11-ms-settings-commands-settings-uri-shortcuts/>

This post will provide you the list of Windows 11 ms-settings commands. Using them, you can create a shortcut to any page of the Settings app or open it indirectly. Almost all pages of Settings can be opened directly with an *ms-settings* command.

[The Settings app](#) in Windows 11 has received a major redesign. It features colorful category icons on the left, and lost its "home page". The latter change simplifies navigation, as you find see at a glance which options are available under the each category.

Also, the right area shows options with a border, making it easier to find and differentiate them. The new Windows 11 Settings app is a huge step forward from what we had in Windows 10.



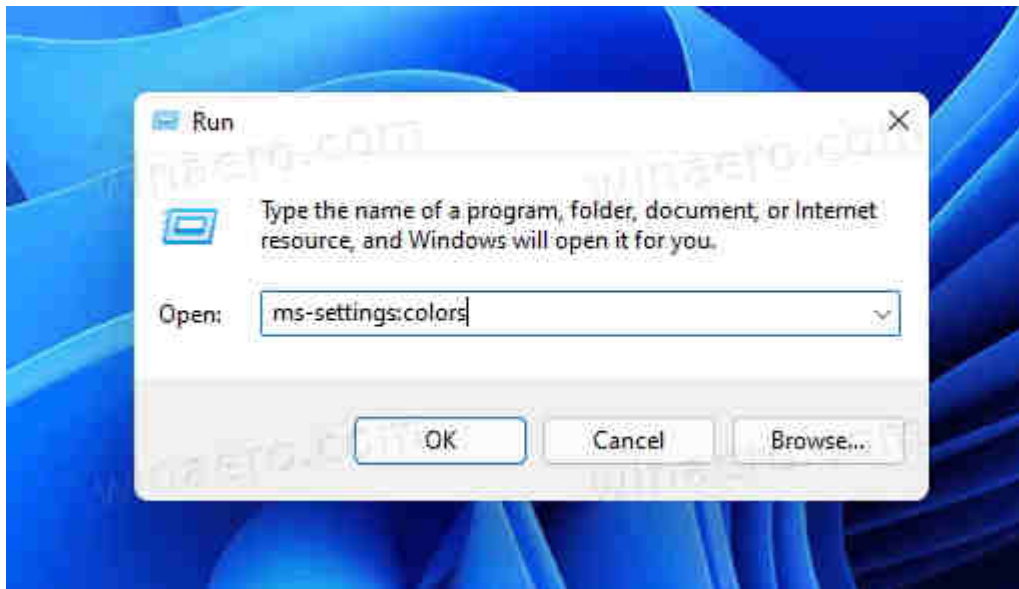
Almost every Settings page has its own [Uniform Resource Identifier](#), or URI. Each command begins with the 'ms-settings' prefix (protocol) followed by the page name. For example, the command `ms-settings:display` opens the *Settings* app will open directly to the **System > Display** page.

## How to use the ms-settings commands in Windows 11

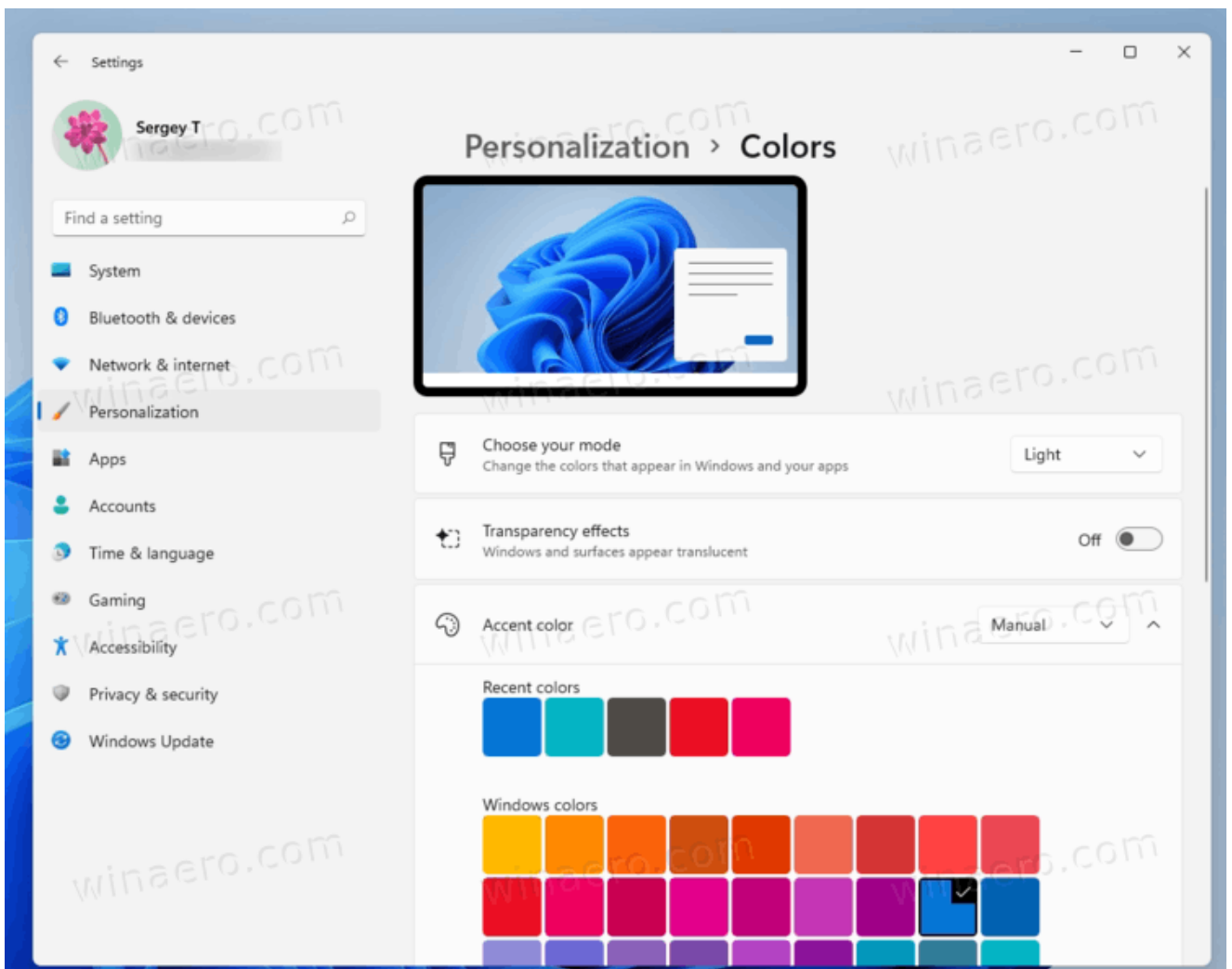
The commands allow you to open any Settings page directly by entering a URI into the Run dialog (Win + R), Command Prompt, etc. You can also use this ability to create a shortcut for any page of Settings.

### Directly open any page

1. Press the Win + R shortcut keys on your keyboard to open the Run dialog.
2. Type or copy-paste an ms-setting command, for example `ms-settings:colors`, into the Run box using the table below, and hit Enter.



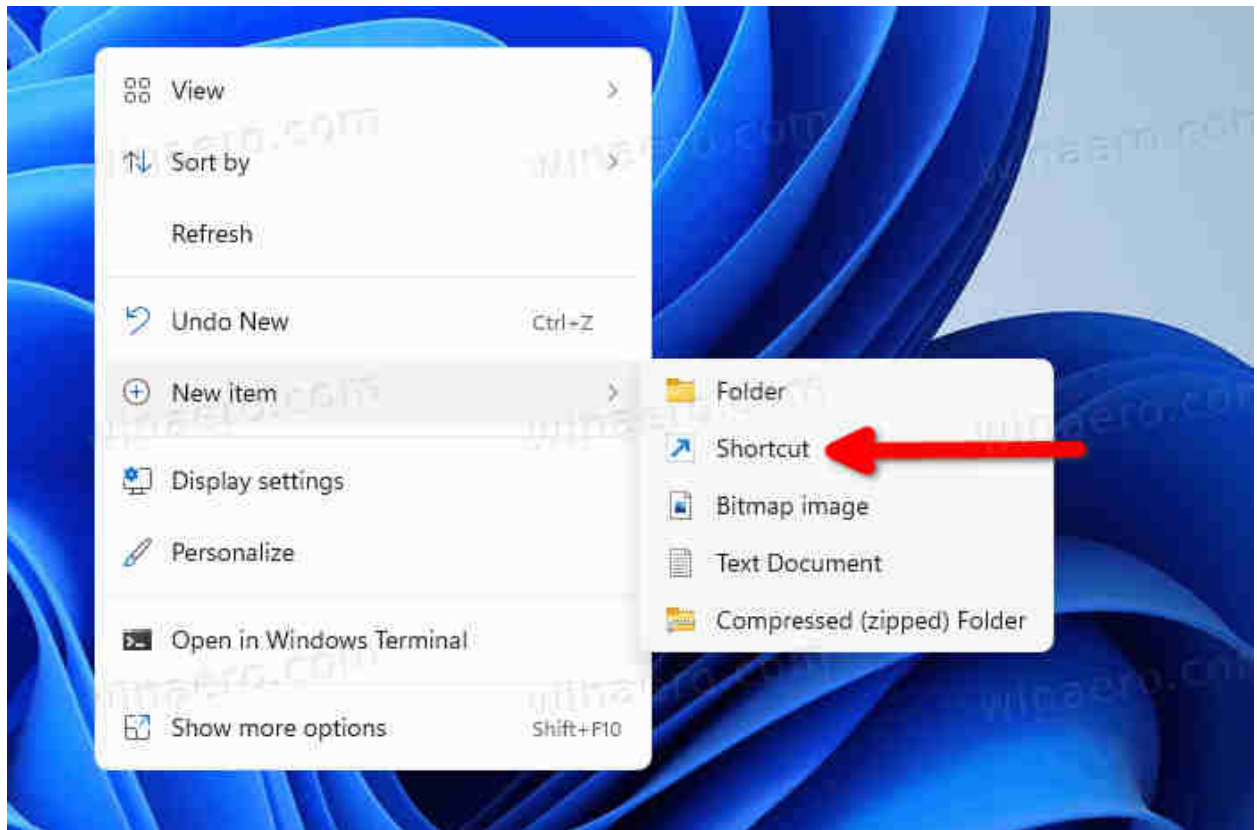
3. Windows 11 will open the Settings app directly to that page. In our example it will be *Personalization > Colors*.



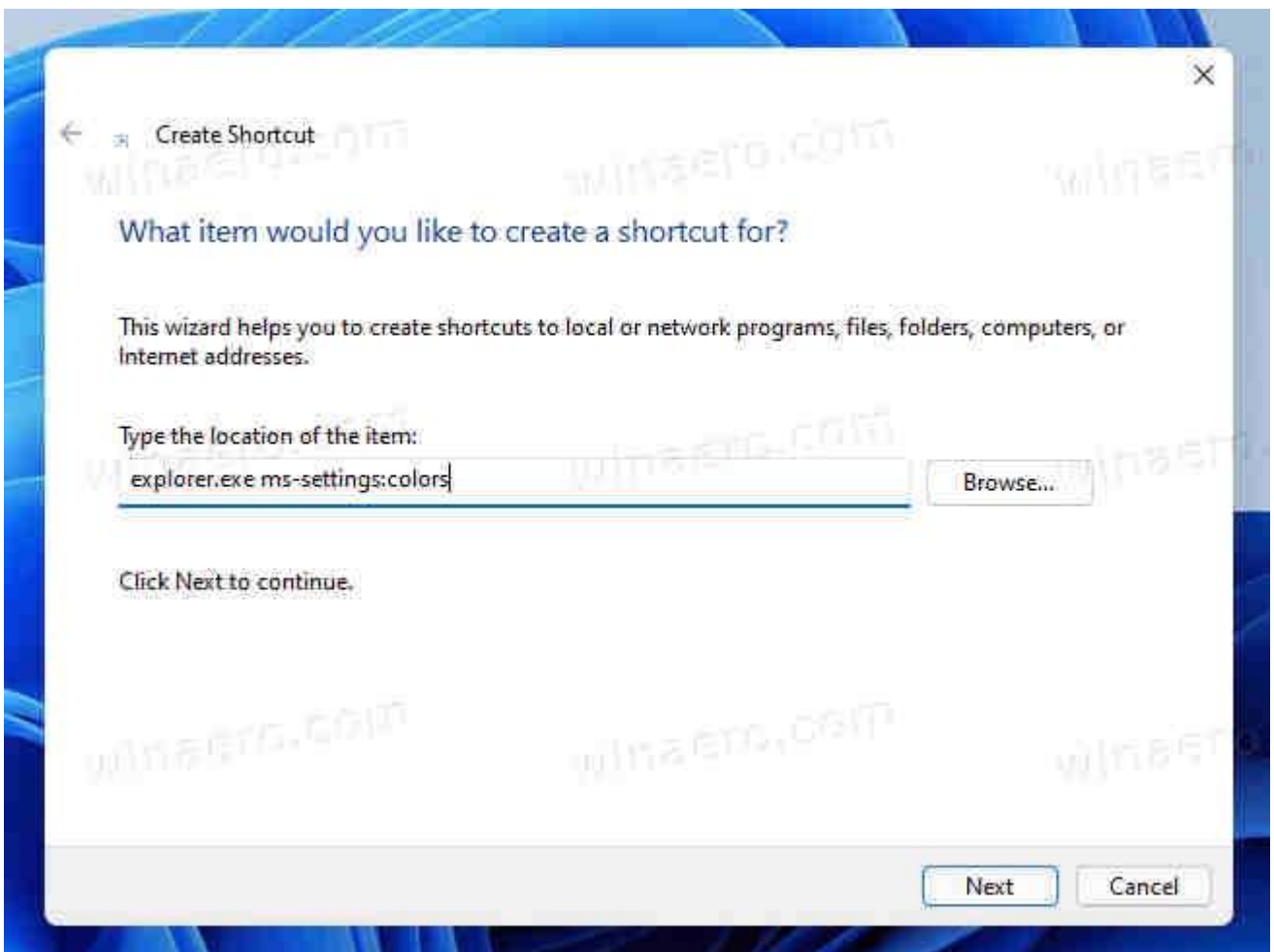
So, if you know Windows 11 ms-settings commands, you can save a lot of time. Similarly, you can create a shortcut to any Settings page.

### How to Create Settings Page Shortcut with an ms-settings command

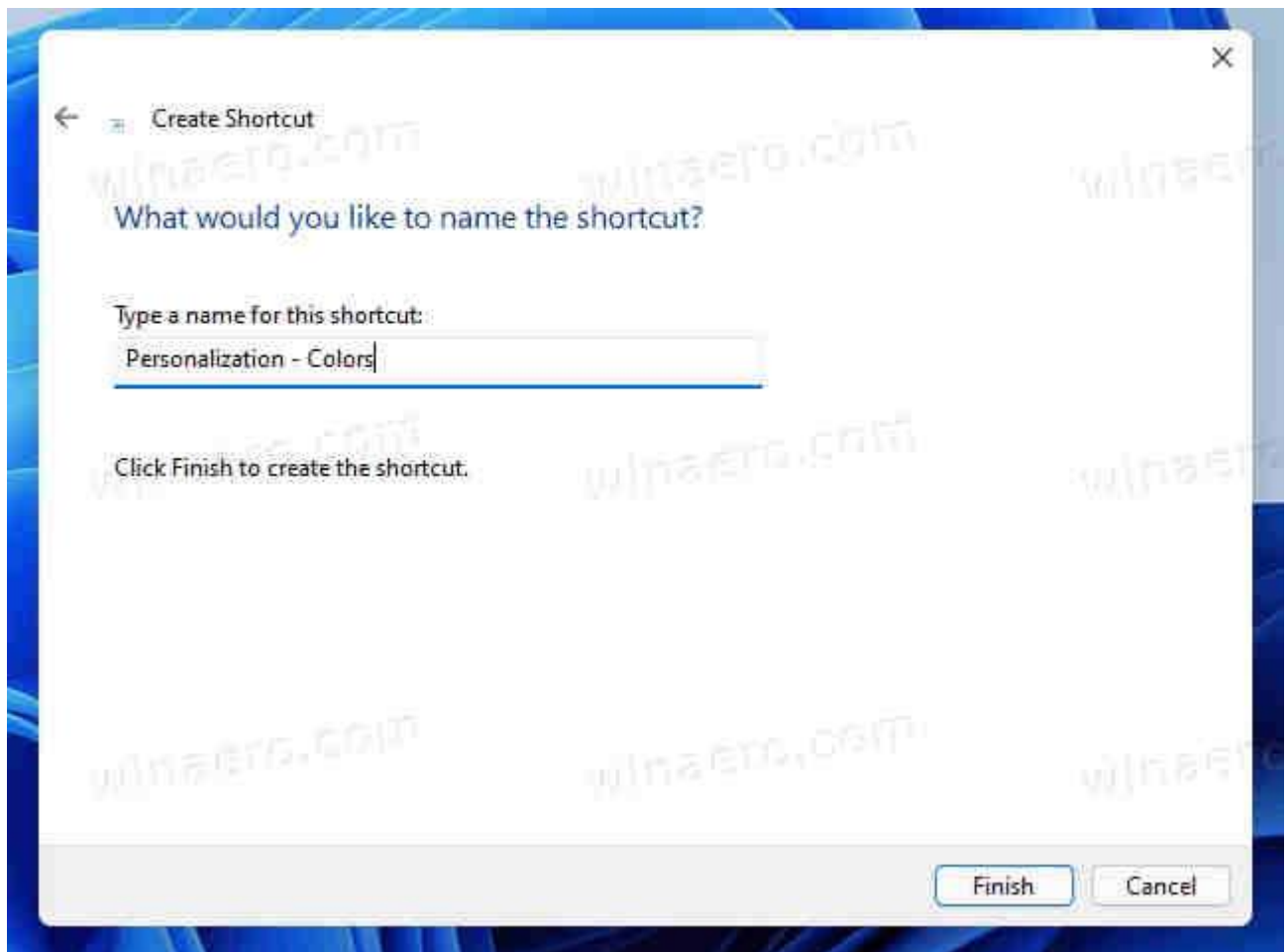
1. Right-click the Desktop background and select *New item > Shortcut* from the menu.



2. Find the `ms-settings` command from the table below that opens the Settings page of your choice.
3. Specify `explorer.exe <ms-settings command>` as for the *location of the item* text box. For example, `explorer.exe ms-settings:colors`.



4. Finally, give your shortcut a meaningful name and change its icon.



You are done! This way, you can create a Settings page shortcut in Windows 11 to any page of Settings that comes with an ms-settings command.

I will keep the below list of ms-settings commands actual, so you can bookmark this page and check it from time to time for updates.

### Windows 11 ms-settings Commands

Category	Settings page	ms-settings command
System		ms-settings:system
	Display	ms-settings:display
	Connect to a wireless display	ms-settings-connectabledevices:devicediscovery
	Night light	ms-settings:nightlight
	Scale	ms-settings:display-advanced
	Graphics	ms-settings:display-advancedgraphics
	Sound	ms-settings:sound
	All sound devices	ms-settings:sound-devices
	Volume mixer	ms-settings:apps-volume
	Choose your sound defaults for AR/VR experiences	ms-settings:holographic-audio
	Notifications	ms-settings:notifications
	Focus assist	ms-settings:quiethours
	During these times	ms-settings:quietmomentsscheduled
	When I'm duplicating my display	ms-settings:quietmomentspresentation
	When I'm playing a game	ms-settings:quietmomentsgame
	Power & battery	ms-settings:powersleep
	Storage	ms-settings:storagesense
	Storage Sense	ms-settings:storagepolicies
	Where new content is saved	ms-settings:savelocations

	Nearby sharing	
	Multitasking	ms-settings:multitasking
	Activation	ms-settings:activation
	Troubleshoot	ms-settings:troubleshoot
	Recovery	ms-settings:recovery
	Projecting to this PC	ms-settings:project
	Remote Desktop	ms-settings:remotedesktop
	Clipboard	ms-settings:clipboard
	About	ms-settings:about
Bluetooth & devices		
	Devices	ms-settings:bluetooth ms-settings:connecteddevices
	Printers & scanners	ms-settings:printers
	Your Phone	ms-settings:mobile-devices
	Cameras	ms-settings:camera
	Mouse	ms-settings:mousetouchpad
	Touchpad	ms-settings:devices-touchpad
	Touch	ms-settings:devices-touch
	Pen & Windows Ink	ms-settings:pen
	AutoPlay	ms-settings:autoplay
	USB	ms-settings:usb
Network & internet		ms-settings:network
	Wi-Fi	ms-settings:network-wifi
	Cellular	ms-settings:network-cellular
	Ethernet	ms-settings:network-ethernet
	VPN	ms-settings:network-vpn
	Mobile hotspot	ms-settings:network-mobilehotspot
	Airplane mode	ms-settings:network-airplanemode
	Proxy	ms-settings:network-proxy
	Dial-up	ms-settings:network-dialup
	Advanced network settings	
Personalization		ms-settings:personalization
	Background	ms-settings:personalization-background
	Colors	ms-settings:personalization-colors ms-settings:colors
	Themes	ms-settings:themes
	Lock screen	ms-settings:lockscreen
	Touch keyboard	ms-settings:personalization-touchkeyboard
	Start	ms-settings:personalization-start
	Folders	ms-settings:personalization-start-places
	Taskbar	ms-settings:taskbar
	Fonts	ms-settings:fonts
	Device usage	ms-settings:deviceusage
Apps		
	Apps & features	ms-settings:appsfeatures
	Default apps	ms-settings:defaultapps
	Offline maps	ms-settings:maps
	Download maps	ms-settings:maps-downloadmaps
	Optional features	
	Apps for websites	ms-settings:appsforwebsites
	Video playback	ms-settings:videoplayback
	Startup	ms-settings:startupapps
Accounts		ms-settings:accounts
	Your info	ms-settings:yourinfo
	Email & accounts	ms-settings:emailandaccounts
	Sign-in options	ms-settings:signinoptions
	Windows Hello face setup or improve recognition	ms-settings:signinoptions-launchfaceenrollment

	Windows Hello fingerprint setup	ms-settings:signinoptions-launchfingerprintenrollment
	Manage Security Key	ms-settings:signinoptions-launchsecuritykeyenrollment
	Dynamic Lock	ms-settings:signinoptions-dynamiclock
	Family & other users	ms-settings:eeek:therusers
	Windows Backup	ms-settings:backup
	Access work or school	ms-settings:workplace
Time and language		
	Date & time	ms-settings:dateandtime
	Language & region	ms-settings:regionlanguage
	Typing	ms-settings:typing
	Show text suggestions when typing on the physical keyboard	ms-settings:devicestyping-hwkbtextsuggestions
	Speech	ms-settings:speech
Gaming		
	Xbox Game Bar	ms-settings:gaming-gamebar
	Captures	ms-settings:gaming-gamedvr
	Game Mode	ms-settings:gaming-gamemode
Accessibility		
	Vision	
	Text size	ms-settings:easeofaccess-display
	Visual effects	ms-settings:easeofaccess-visualeffects
	Mouse pointer and touch	ms-settings:easeofaccess-mousepointer
	Text cursor	ms-settings:easeofaccess-cursor
	Magnifier	ms-settings:easeofaccess-magnifier
	Color filters	ms-settings:easeofaccess-colorfilter
	Contrast themes	ms-settings:easeofaccess-highcontrast
	Narrator	ms-settings:easeofaccess-narrator
	Hearing	
	Audio	ms-settings:easeofaccess-audio
	Captions	ms-settings:easeofaccess-closedcaptioning
	Interaction	
	Speech	ms-settings:easeofaccess-speechrecognition
	Keyboard	ms-settings:easeofaccess-keyboard
	Mouse	ms-settings:easeofaccess-mouse
	Eye control	ms-settings:easeofaccess-eyecontrol
Privacy & security		ms-settings:privacy
	Security	
	Windows Security	ms-settings:windowsdefender
	Find my device	ms-settings:findmydevice
	Device encryption	ms-settings:deviceencryption
	For developers	ms-settings:developers
	Windows Permissions	
	General	ms-settings:privacy
	Speech	ms-settings:privacy-speech
	Inking & typing personalization	ms-settings:privacy-speechtyping
	Diagnostics & feedback	ms-settings:privacy-feedback
	View diagnostic data	ms-settings:privacy-feedback-telemetryviewergroup
	Activity history	ms-settings:privacy-activityhistory
	Search permissions	ms-settings:search-permissions
	Searching Windows	ms-settings:cortana-windowssearch
	App permissions	
	Location	ms-settings:privacy-location
	Camera	ms-settings:privacy-webcam
	Microphone	ms-settings:privacy-microphone
	Voice activation	ms-settings:privacy-voiceactivation

	Notifications	ms-settings:privacy-notifications
	Account info	ms-settings:privacy-accountinfo
	Contacts	ms-settings:privacy-contacts
	Calendar	ms-settings:privacy-calendar
	Phone calls	ms-settings:privacy-phonecalls
	Call history	ms-settings:privacy-callhistory
	Email	ms-settings:privacy-email
	Tasks	ms-settings:privacy-tasks
	Messaging	ms-settings:privacy-messaging
	Radios	ms-settings:privacy-radios
	Other devices	ms-settings:privacy-customdevices
	App diagnostics	ms-settings:privacy-appdiagnostics
	Automatic file downloads	ms-settings:privacy-automaticfiledownloads
	Documents	ms-settings:privacy-documents
	Downloads folder	ms-settings:privacy-downloadsfolder
	Music library	ms-settings:privacy-musiclibrary
	Pictures	ms-settings:privacy-pictures
	Videos	ms-settings:privacy-documents
	File system	ms-settings:privacy-broadfilesystemaccess
	Screenshot borders	
	Screenshots and apps	
Windows Update		ms-settings:windowsupdate
	Update history	ms-settings:windowsupdate-history
	Advanced options	ms-settings:windowsupdate-options
	Optional updates	ms-settings:windowsupdate-optionalupdates
	Windows Insider Program	ms-settings:windowsinsider
Mixed reality		ms-settings:holographic
	Audio & speech	ms-settings:holographic-audio
	Startup & desktop	
	Environment	ms-settings:privacy-holographic-environment
	Headset display	ms-settings:holographic-headset
	Uninstall	ms-settings:holographic-management