

How to add Windows Update to Control Panel in Windows 10

<https://winaero.com/blog/how-to-add-windows-update-to-control-panel-in-windows-10/>

If you use the classic Control Panel in Windows 10, you might have noticed already that it does not contain a link to Windows Update. If you are interested in adding the link back, follow the instructions in this article.

There are two things which will help us add Windows Update back to Control Panel:

1. Windows Update can be launched with the following command:

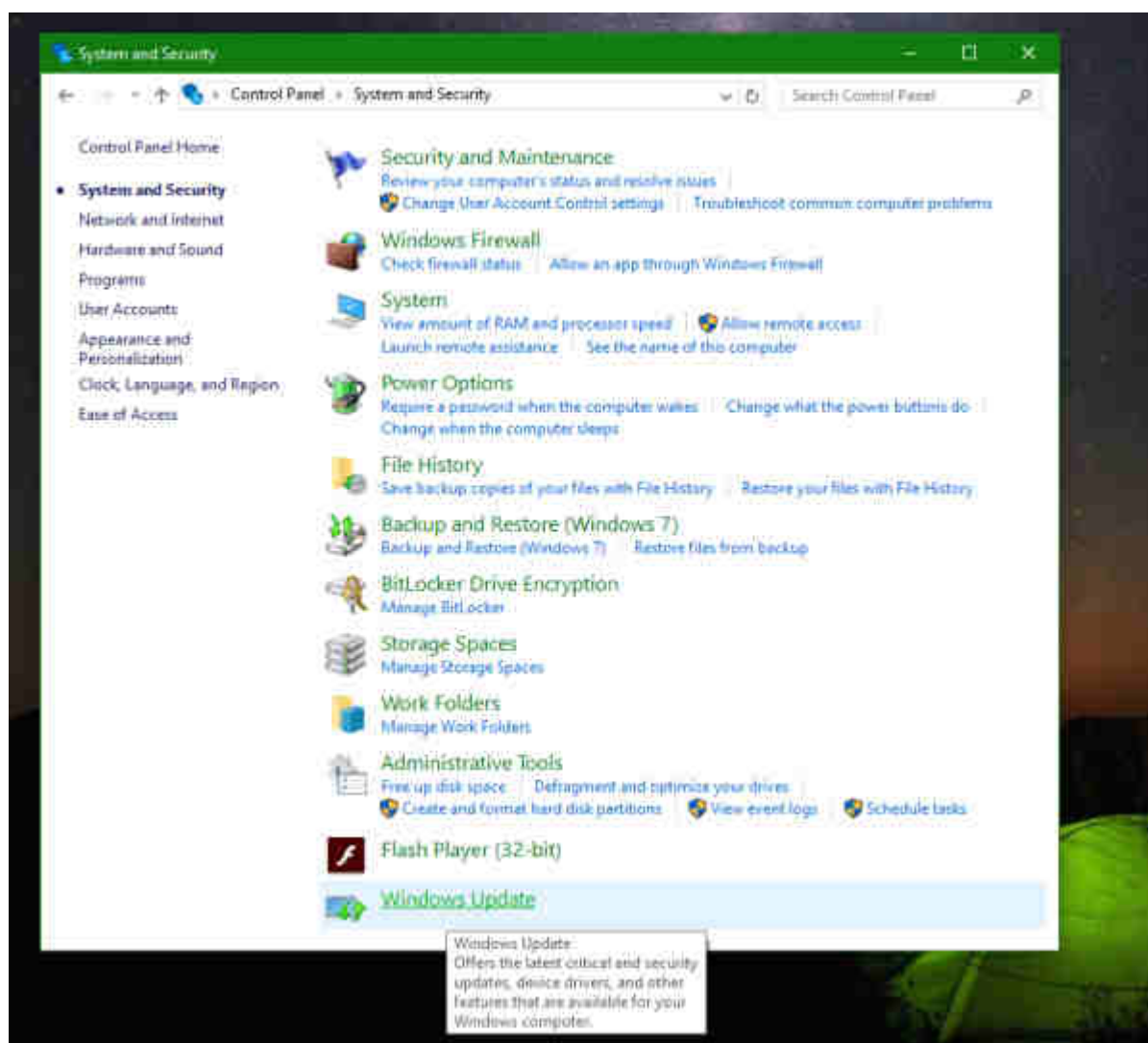
```
control.exe /name Microsoft.WindowsUpdate
```

2. Shell32.dll still contains the required text lines to be used in Control Panel.

So, here is a simple Registry tweak which can restore Windows Update inside the Control Panel\System and Security category. As of this writing, it works perfectly in the latest stable release of Windows 10, build 10586 (November Update/Threshold 2).

To **add Windows Update to Control Panel in Windows 10**, download and merge the following ready-to-use Registry tweak: [Download Registry file to add Windows Update to Control Panel](#)

Extract the two *.reg files from the ZIP archive you downloaded and double click the file named *Windows-10-add-wu.reg*. Confirm with Yes to merge it into the Registry. The result will be as follows:



The undo file is included in the archive. To revert this change, double click the file *Windows-10-remove-wu.reg*.

The Registry file contains this text:

Windows Registry Editor Version 5.00

```
[HKEY_CLASSES_ROOT\CLSID\{36eef7db-88ad-4e81-ad49-0e313f0c35f8}]
```

```
"System.Software.TasksFileUrl"="Internal"
```

```
"System.ApplicationName"="Microsoft.WindowsUpdate"
```

```
"System.ControlPanel.Category"="5"
```

```
@="@%SystemRoot%\system32\shell32.dll,-22068"
```

```
"InfoTip"="@%SystemRoot%\system32\shell32.dll,-22580"
```

```
[HKEY_CLASSES_ROOT\CLSID\{36eef7db-88ad-4e81-ad49-0e313f0c35f8}\DefaultIcon]
```

```
@="shell32.dll,-47"
```

```
[HKEY_CLASSES_ROOT\CLSID\{36eef7db-88ad-4e81-ad49-0e313f0c35f8}\Shell]
```

```
[HKEY_CLASSES_ROOT\CLSID\{36eef7db-88ad-4e81-ad49-0e313f0c35f8}\Shell\Open]
```

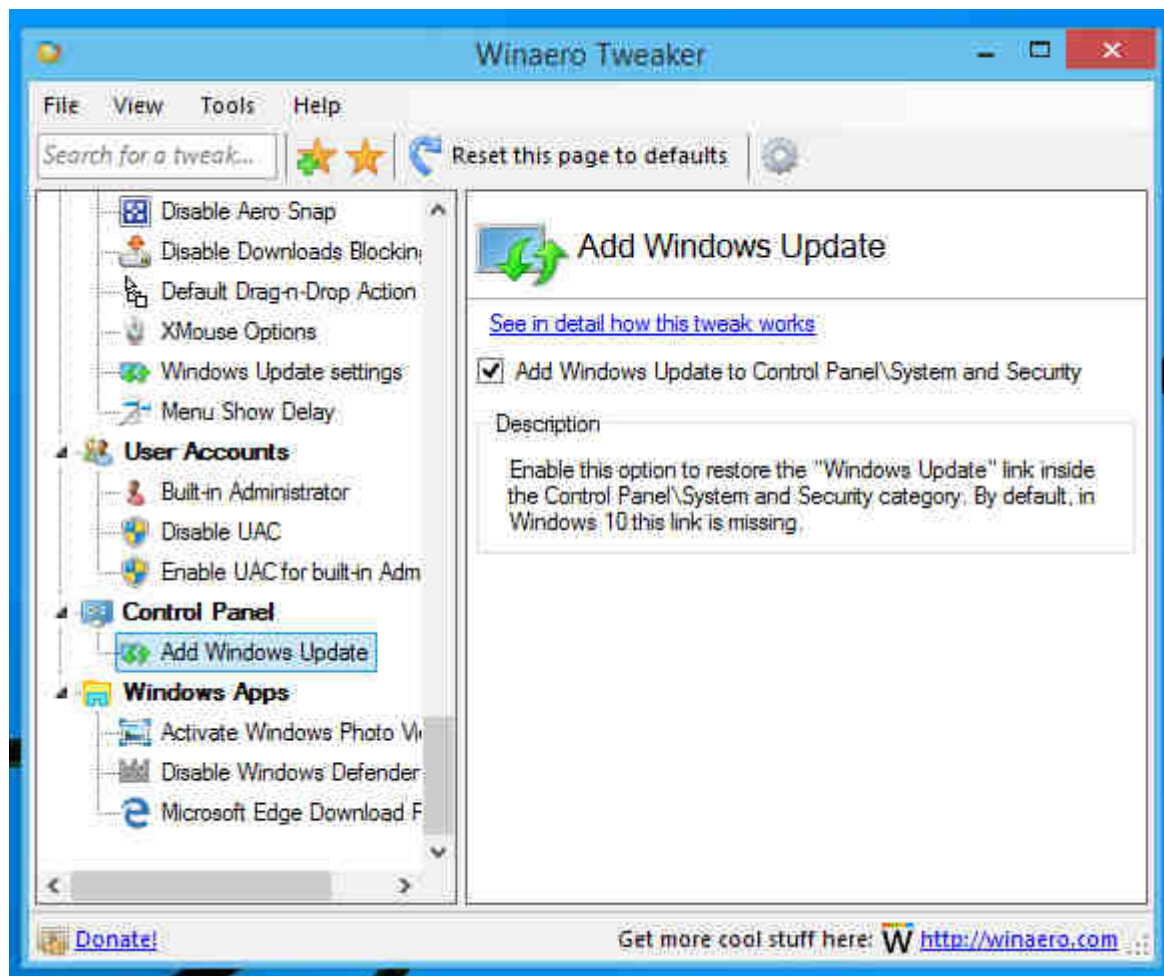
```
[HKEY_CLASSES_ROOT\CLSID\{36eef7db-88ad-4e81-ad49-0e313f0c35f8}\Shell\Open\Command]
```

```
@=hex(2):63,00,6f,00,6e,00,74,00,72,00,6f,00,6c,00,2e,00,65,00,78,00,65,00,20,\  
00,2f,00,6e,00,61,00,6d,00,65,00,20,00,4d,00,69,00,63,00,72,00,6f,00,73,00,\  
6f,00,66,00,74,00,2e,00,57,00,69,00,6e,00,64,00,6f,00,77,00,73,00,55,00,70,\  
00,64,00,61,00,74,00,65,00,00,00
```

```
[HKEY_LOCAL_MACHINE\SOFTWARE\Microsoft\Windows\CurrentVersion\Explorer\ControlPanel\Namespace\{36  
eef7db-88ad-4e81-ad49-0e313f0c35f8}]
```

```
@="Windows Update"
```

The same can be done using [Winaero Tweaker](#). Go to Control Panel -> Add Windows Update:



Use this option to avoid Registry editing.

That's it. Have questions or suggestions about this tip? Then you are welcome to comment.

To ADD Classic Windows Update to the Control Panel use

Windows Registry Editor Version 5.00

```
[HKEY_CLASSES_ROOT\CLSID\{36eef7db-88ad-4e81-ad49-0e313f0c35f8}]
```

```
"System.Software.TasksFileUrl"="Internal"
```

```
"System.ApplicationName"="Microsoft.WindowsUpdate"
```

```
"System.ControlPanel.Category"="5"
```

```
@="@%SystemRoot%\system32\shell32.dll,-22068"
```

```
"InfoTip"="@%SystemRoot%\system32\shell32.dll,-22580"
```

```
[HKEY_CLASSES_ROOT\CLSID\{36eef7db-88ad-4e81-ad49-0e313f0c35f8}\DefaultIcon]
```

```
@="shell32.dll,-47"
```

```
[HKEY_CLASSES_ROOT\CLSID\{36eef7db-88ad-4e81-ad49-0e313f0c35f8}\Shell]
```

```
[HKEY_CLASSES_ROOT\CLSID\{36eef7db-88ad-4e81-ad49-0e313f0c35f8}\Shell\Open]
```

```
[HKEY_CLASSES_ROOT\CLSID\{36eef7db-88ad-4e81-ad49-0e313f0c35f8}\Shell\Open\Command]
```

```
@=hex(2):63,00,6f,00,6e,00,74,00,72,00,6f,00,6c,00,2e,00,65,00,78,00,65,00,20,\  
00,2f,00,6e,00,61,00,6d,00,65,00,20,00,4d,00,69,00,63,00,72,00,6f,00,73,00,\  
6f,00,66,00,74,00,2e,00,57,00,69,00,6e,00,64,00,6f,00,77,00,73,00,55,00,70,\  
00,64,00,61,00,74,00,65,00,00,00
```

```
[HKEY_LOCAL_MACHINE\SOFTWARE\Microsoft\Windows\CurrentVersion\Explorer\ControlPanel\Namespace\{36eef7db-88ad-4e81-ad49-0e313f0c35f8}]
```

```
@="Windows Update"
```

To REMOVE Classic Windows Update to the Control Panel use

Windows Registry Editor Version 5.00

```
[-HKEY_CLASSES_ROOT\CLSID\{36eef7db-88ad-4e81-ad49-0e313f0c35f8}]
```

```
[-
```

```
HKEY_LOCAL_MACHINE\SOFTWARE\Microsoft\Windows\CurrentVersion\Explorer\ControlPanel\Namespace\{36eef7db-88ad-4e81-ad49-0e313f0c35f8}]
```