

## Site-to-Site VPN Configuration Examples

---

### Table Of Contents

[Site-to-Site VPN Configuration Examples](#)

[Using Pre-Shared Keys](#)

[Scenario Description](#)

[Configuring PIX Firewall 1 with VPN Tunneling](#)

[Configuring PIX Firewall 2 for VPN Tunneling](#)

[Using PIX Firewall with a VeriSign CA](#)

[Scenario Description](#)

[Configuring PIX Firewall 1 with a VeriSign CA](#)

[Configuring PIX Firewall 2 with a VeriSign CA](#)

[Using PIX Firewall with an In-House CA](#)

[Scenario Description](#)

[Configuring PIX Firewall 1 for an In-House CA](#)

[Configuring PIX Firewall 2 for an In-House CA](#)

[Using an Encrypted Tunnel to Obtain Certificates](#)

[Establishing a Tunnel Using a Pre-Shared Key](#)

[Establishing a Tunnel with a Certificate](#)

[Connecting to a Catalyst 6500 and Cisco 7600 Series IPSec VPN Services Module](#)

[Scenario Description](#)

[Configuring IPSec Using a Trunk Port](#)

[Configuring IPSec Using a Routed Port](#)

[Verifying Your Configuration](#)

[Manual Configuration with NAT](#)

[PIX Firewall 1 Configuration](#)

[PIX Firewall 2 Configuration](#)

### Site-to-Site VPN Configuration Examples

---

A site-to-site VPN protects the network resources on your protected networks from unauthorized use by users on an unprotected network, such as the public Internet. The basic configuration for this type of implementation has been covered in [Chapter 6, "Configuring IPSec and Certification Authorities."](#) This chapter provides examples of the following site-to-site VPN configurations:

- [Using Pre-Shared Keys](#)
- [Using PIX Firewall with a VeriSign CA](#)
- [Using PIX Firewall with an In-House CA](#)
- [Using an Encrypted Tunnel to Obtain Certificates](#)
- [Connecting to a Catalyst 6500 and Cisco 7600 Series IPSec VPN Services Module](#)
- [Manual Configuration with NAT](#)



**Note** Throughout the examples in this chapter, the local PIX Firewall unit is identified as PIX Firewall 1 while the remote unit is identified as PIX Firewall 2. This designation makes it easier to clarify the configuration required for each.

## Using Pre-Shared Keys

This section describes an example configuration for using pre-shared keys. It contains the following topics:

- [Scenario Description](#)
- [Configuring PIX Firewall 1 with VPN Tunneling](#)
- [Configuring PIX Firewall 2 for VPN Tunneling](#)

### Scenario Description

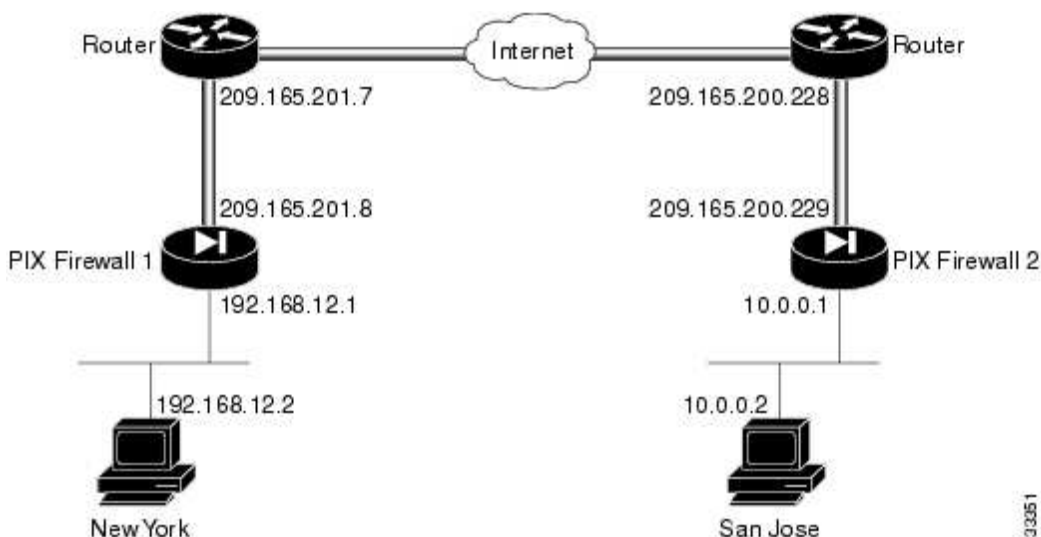
In the example illustrated in [Figure 7-1](#), the intranets use unregistered addresses and are connected over the public Internet by a site-to-site VPN. In this scenario, NAT is required for connections to the public Internet. However, NAT is not required for traffic between the two intranets, which can be transmitted using a VPN tunnel over the public Internet.



**Note** If you do not need to do VPN tunneling for intranet traffic, you can use this example without the **access-list** or the **nat 0 access-list** commands. These commands disable NAT for traffic that matches the access list criteria.

If you have a limited number of registered IP addresses and you cannot use PAT, you can configure PIX Firewall to use NAT for connections to the public Internet, but avoid NAT for traffic between the two intranets. This configuration might also be useful if you were replacing a direct, leased-line connection between two intranets.

Figure 7-1 VPN Tunnel Network



The configuration shown for this example uses an access list to exclude traffic between the two intranets from NAT. The configuration assigns a global pool of registered IP addresses for use by NAT for all other traffic. By excluding intranet traffic from NAT, you need fewer registered IP addresses.

### Configuring PIX Firewall 1 with VPN Tunneling

Follow these steps to configure PIX Firewall 1:

---

**Step 1** Define a host name:

```
hostname NewYork
```

**Step 2** Configure an ISAKMP policy:

```
isakmp enable outside
isakmp policy 9 authentication pre-share
isakmp policy 9 encrypt 3des
```

**Step 3** Configure a pre-shared key and associate with the peer:

```
crypto isakmp key cisco1234 address 209.165.200.229
```

**Step 4** Configure the supported IPSec transforms:

```
crypto ipsec transform-set strong esp-3des esp-sha-hmac
```

**Step 5** Create an access list:

```
access-list 90 permit ip 192.168.12.0 255.255.255.0 10.0.0.0 255.0.0.0
```

This access list defines traffic from network 192.168.12.0 to 10.0.0.0. Both of these networks use unregistered addresses.



---

**Note** Steps 5 and 6 are not required if you want to enable NAT for all traffic.

---

**Step 6** Exclude traffic between the intranets from NAT:

```
nat 0 access-list 90
```

This excludes traffic matching access list 90 from NAT. The **nat 0** command is always processed before any other **nat** commands.

**Step 7** Enable NAT for all other traffic:

```
nat (inside) 1 0 0
```

**Step 8** Assign a pool of global addresses for NAT and PAT:

```
global (outside) 1 209.165.201.9-209.165.201.30
global (outside) 1 209.165.201.8
```

The pool of registered addresses are only used for connections to the public Internet.

**Step 9** Define a crypto map:

```
crypto map toSanJose 20 ipsec-isakmp
crypto map toSanJose 20 match address 90
crypto map toSanJose 20 set transform-set strong
crypto map toSanJose 20 set peer 209.165.200.229
```

**Step 10** Apply the crypto map to the outside interface:

```
crypto map toSanJose interface outside
```

**Step 11** Specify that IPSec traffic be implicitly trusted (permitted):

```
sysopt connection permit-ipsec
```

---

[Example 7-1](#) lists the configuration for PIX Firewall 1.

## Example 7-1 PIX Firewall 1 VPN Tunnel Configuration

```
nameif ethernet0 outside security0
nameif ethernet1 inside security100
interface ethernet0 auto
interface ethernet1 auto
enable password 8Ry2YjIyt7RRXU24 encrypted
passwd 2KFQnbNIdI.2KYOU encrypted
hostname NewYork
domain-name example.com
fixup protocol ftp 21
fixup protocol http 80
fixup protocol smtp 25
fixup protocol h323 1720
fixup protocol rsh 514
fixup protocol sqlnet 1521
names
pager lines 24
no logging on
mtu outside 1500
mtu inside 1500
ip address outside 209.165.201.8 255.255.255.224
ip address inside 192.168.12.1 255.255.255.0
no failover
failover ip address outside 0.0.0.0
failover ip address inside 0.0.0.0
arp timeout 14400
nat (inside) 0 access-list 90
access-list 90 permit ip 192.168.12.0 255.255.255.0 10.0.0.0 255.0.0.0
nat (inside) 1 0 0
global (outside) 1 209.165.201.9-209.165.201.30
global (outside) 1 209.165.201.8
no rip outside passive
no rip outside default
rip inside passive
no rip inside default
route outside 0.0.0.0 0.0.0.0 209.165.201.7 1
timeout xlate 3:00:00 conn 1:00:00 half-closed 0:10:00 udp 0:02:00
timeout rpc 0:10:00 h323 0:05:00
timeout uauth 0:05:00 absolute
aaa-server TACACS+ protocol tacacs+
aaa-server RADIUS protocol radius
no snmp-server location
no snmp-server contact
snmp-server community public
no snmp-server enable traps
sysopt connection permit-ipsec
crypto ipsec transform-set strong esp-3des esp-sha-hmac
crypto map toSanJose 20 ipsec-isakmp
crypto map toSanJose 20 match address 90
crypto map toSanJose 20 set peer 209.165.200.229
crypto map toSanJose 20 set transform-set strong
crypto map toSanJose interface outside
isakmp enable outside
isakmp key cisco1234 address 209.165.200.229 netmask 255.255.255.255
isakmp policy 9 authentication pre-share
isakmp policy 9 encryption 3des
telnet timeout 5
terminal width 80
```



---

**Note** In this example, the following statements are not used when enabling NAT for all traffic:

```
nat 0 access-list 90
access-list 90 permit ip 192.168.12.0 255.255.255.0 10.0.0.0 255.0.0.0
```

---

## Configuring PIX Firewall 2 for VPN Tunneling

Follow these steps to configure PIX Firewall 2:

---

**Step 1** Define a host name:

```
hostname SanJose
```

**Step 2** Define the domain name:

```
domain-name example.com
```

**Step 3** Configure the ISAKMP policy:

```
isakmp enable outside
isakmp policy 8 authentication pre-share
isakmp policy 8 encryption 3des
```

**Step 4** Configure a pre-shared key and associate it with the peer:

```
crypto isakmp key cisco1234 address 209.165.201.8
```

**Step 5** Configure IPsec supported transforms:

```
crypto ipsec transform-set strong esp-3des esp-sha-hmac
```

**Step 6** Create an access list:

```
access-list 80 permit ip 10.0.0.0 255.0.0.0 192.168.12.0 255.255.255.0
```

This access list defines traffic from network 10.0.0.0 to 192.168.12.0. Both of these networks use unregistered addresses.



---

**Note** Step 7 and Step 8 are not required if you want to enable NAT for all traffic.

---

**Step 7** Exclude traffic between the intranets from NAT:

```
nat 0 access-list 80
```

This excludes traffic matching access list 80 from NAT. The **nat 0** command is always processed before any other **nat** commands.

**Step 8** Enable NAT for all other traffic:

```
nat (inside) 1 0 0
```

**Step 9** Assign a pool of global addresses for NAT and PAT:

```
global (outside) 1 209.165.200.240-209.165.200.250
global (outside) 1 209.165.202.251
```

The pool of registered addresses are only used for connections to the public Internet.

**Step 10** Define a crypto map:

```
crypto map newyork 10 ipsec-isakmp
```

```
crypto map newyork 10 match address 80
crypto map newyork 10 set transform-set strong
crypto map newyork 10 set peer 209.165.201.8
```

**Step 11** Apply the crypto map to an interface:

```
crypto map newyork interface outside
```

**Step 12** Specify that IPSec traffic be implicitly trusted (permitted):

```
sysopt connection permit-ipsec
```

---

[Example 7-2](#) lists the configuration for PIX Firewall 2.

#### Example 7-2 PIX Firewall 2 VPN Tunnel Configuration

```
nameif ethernet0 outside security0
nameif ethernet1 inside security100
nameif ethernet2 dmz security50
nameif ethernet3 perimeter security40
enable password 8Ry2YjIyt7RRXU24 encrypted
passwd 2KFQnbNIdI.2KYOU encrypted
hostname SanJose
domain-name example.com
fixup protocol ftp 21
fixup protocol http 80
fixup protocol smtp 25
fixup protocol h323 1720
fixup protocol rsh 514
fixup protocol sqlnet 1521
names
pager lines 24
no logging on
interface ethernet0 auto
interface ethernet1 auto
interface ethernet2 auto
interface ethernet3 auto
mtu outside 1500
mtu inside 1500
mtu dmz 1500
mtu perimeter 1500
ip address outside 209.165.200.229 255.255.255.224
ip address inside 10.0.0.1 255.0.0.0
ip address dmz 192.168.101.1 255.255.255.0
ip address perimeter 192.168.102.1 255.255.255.0
no failover
failover ip address outside 0.0.0.0
failover ip address inside 0.0.0.0
failover ip address dmz 0.0.0.0
failover ip address perimeter 0.0.0.0
arp timeout 14400
nat 0 access-list 80
access-list 80 permit ip 10.0.0.0 255.0.0.0 192.168.12.0 255.255.255.0
nat (inside) 1 0 0
global (outside) 1 209.165.200.240-209.165.200.250
global (outside) 1 209.165.202.251
no rip outside passive
no rip outside default
no rip inside passive
no rip inside default
no rip dmz passive
```

```
no rip dmz default
no rip perimeter passive
no rip perimeter default
route outside 0.0.0.0 0.0.0.0 209.165.200.228 1
timeout xlate 3:00:00 conn 1:00:00 half-closed 0:10:00 udp 0:02:00
timeout rpc 0:10:00 h323 0:05:00
timeout uauth 0:05:00 absolute
aaa-server TACACS+ protocol tacacs+
aaa-server RADIUS protocol radius
no snmp-server location
no snmp-server contact
snmp-server community public
no snmp-server enable traps
sysopt connection permit-ipsec
crypto ipsec transform-set strong esp-3des esp-sha-hmac
crypto map newyork 10 ipsec-isakmp
crypto map newyork 10 match address 80
crypto map newyork 10 set peer 209.165.201.8
crypto map newyork 10 set transform-set strong
crypto map newyork interface outside
isakmp enable outside
isakmp key cisco1234 address 209.165.201.8 netmask 255.255.255.255
isakmp policy 8 authentication pre-share
isakmp policy 8 encryption 3des
telnet timeout 5
terminal width 80
```



---

**Note** In [Example 7-2](#), the following statements are not used when enabling NAT for all traffic:

```
nat 0 access-list 80
access-list 80 permit ip 10.0.0.0 255.0.0.0 192.168.12.0 255.255.255.00
```

---

## Using PIX Firewall with a VeriSign CA

This section provides configuration examples showing how to configure interoperability between two PIX Firewall units (PIX Firewall 1 and 2) for site-to-site VPN using the VeriSign CA server for device enrollment, certificate requests, and digital certificates for the IKE authentication. This section includes the following topics:

- [Scenario Description](#)
- [Configuring PIX Firewall 1 with a VeriSign CA](#)
- [Configuring PIX Firewall 2 with a VeriSign CA](#)

### Scenario Description

The two VPN peers in the configuration examples are shown to be configured to enroll with VeriSign at the IP address of 209.165.202.130 and to obtain their CA certificates from this CA server. VeriSign is a public CA that issues its CA-signed certificates over the Internet. Once each peer obtains its CA-signed certificate, tunnels can be established between the two VPN peers using digital certificates as the authentication method used during IKE authentication. The peers dynamically authenticate each other using the digital certificates.



---

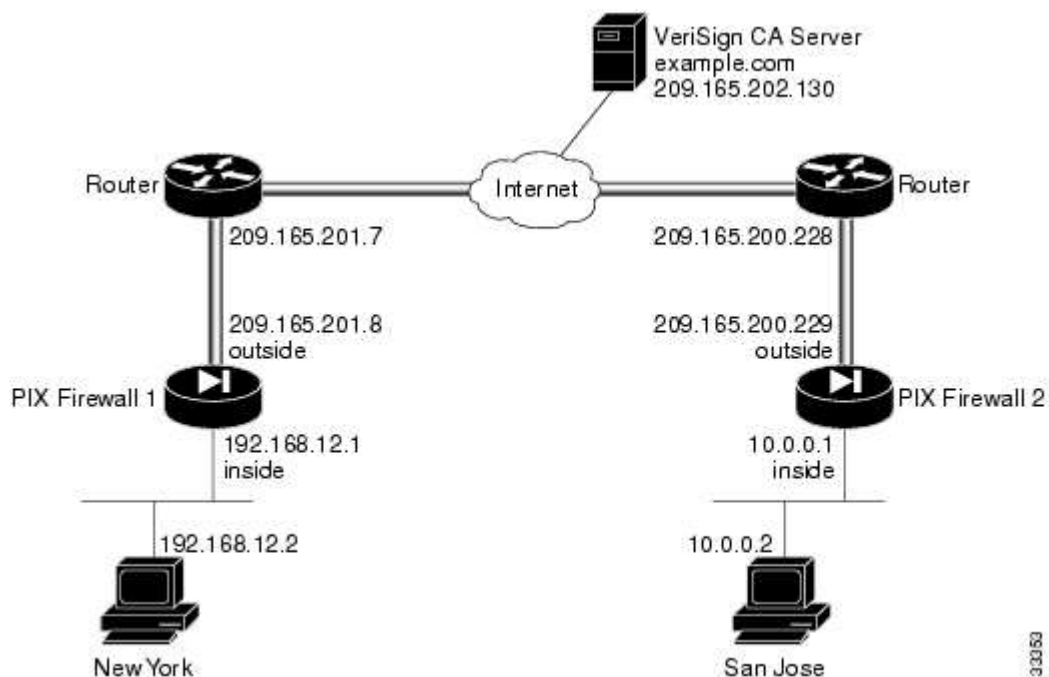
**Note** VeriSign's actual CA server address differs. The example CA server address is to be used for example purposes only.

---

For the general procedures to configure the PIX Firewall for a CA, see " [Using Certification Authorities](#)" in [Chapter 6, "Configuring IPsec and Certification Authorities."](#)

This section provides an example configuration for the specific network illustrated in [Figure 7-2](#).

Figure 7-2 VPN Tunnel Network



### Configuring PIX Firewall 1 with a VeriSign CA

Perform the following steps to configure PIX Firewall 1 to use a public CA:

**Step 1** Define a host name:

```
hostname NewYork
```

**Step 2** Define the domain name:

```
domain-name example.com
```

**Step 3** Generate the PIX Firewall RSA key pair:

```
ca generate rsa key 512
```

This command is not stored in the configuration.

**Step 4** Define VeriSign-related enrollment commands:

```
ca identity example.com 209.165.202.130
ca configure example.com ca 2 20 crloptional
```

These commands are stored in the configuration. "2" is the retry period, "20" is the retry count, and the **crloptional** option disables CRL checking.

**Step 5** Authenticate the CA by obtaining its public key and its certificate:

```
ca authenticate example.com
```

This command is not stored in the configuration.

**Step 6** Request signed certificates from your CA for your PIX Firewall's RSA key pair. Before entering this command, contact your CA administrator because they will have to authenticate your PIX Firewall manually before granting its certificate.

```
ca enroll example.com abcdef
```



"abcdef" is a challenge password. This can be anything. This command is not stored in the configuration.

**Step 7** Verify that the enrollment process was successful using the **show ca certificate** command:

```
show ca certificate
```

**Step 8** Save keys and certificates, and the CA commands (except those indicated) in Flash memory:

```
ca save all  
write memory
```



---

**Note** Use the **ca save all** command any time you add, change, or delete **ca** commands in the configuration. This command is not stored in the configuration.

---

**Step 9** Configure an IKE policy:

```
isakmp enable outside  
isakmp policy 8 auth rsa-sig
```

**Step 10** Create a partial access list:

```
access-list 90 permit ip 192.168.12.0 255.255.255.0 10.0.0.0 255.0.0.0
```

**Step 11** Configure a transform set that defines how the traffic will be protected:

```
crypto ipsec transform-set strong esp-3des esp-sha-hmac
```

**Step 12** Define a crypto map:

```
crypto map toSanJose 20 ipsec-isakmp  
crypto map toSanJose 20 match address 90  
crypto map toSanJose 20 set transform-set strong  
crypto map toSanJose 20 set peer 209.165.200.229
```

**Step 13** Apply the crypto map to the outside interface:

```
crypto map toSanJose interface outside
```

**Step 14** Tell the PIX Firewall to implicitly permit IPSec traffic:

```
sysopt connection permit-ipsec
```

---

[Example 7-3](#) lists the configuration for PIX Firewall 1. PIX Firewall default configuration values and certain CA commands are not displayed in configuration listings.

Example 7-3 PIX Firewall 1 with Public CA

```
nameif ethernet0 outside security0  
nameif ethernet1 inside security100  
enable password 8Ry2YjIyt7RRXU24 encrypted  
passwd 2KFQnbNIdI.2KYOU encrypted  
hostname NewYork  
domain-name example.com  
fixup protocol ftp 21  
fixup protocol http 80  
fixup protocol smtp 25  
fixup protocol h323 1720  
fixup protocol rsh 514  
fixup protocol sqlnet 1521
```

```

names
pager lines 24
no logging on
interface ethernet0 auto
interface ethernet1 auto
mtu outside 1500
mtu inside 1500
ip address outside 209.165.201.8 255.255.255.224
ip address inside 192.168.12.1 255.255.255.0
no failover
failover ip address outside 0.0.0.0
failover ip address inside 0.0.0.0
arp timeout 14400
nat (inside) 0 0.0.0.0 0.0.0.0 0 0
nat 0 access-list 90
access-list 90 permit ip 192.168.12.0 255.255.255.0 10.0.0.0 255.0.0.0
no rip outside passive
no rip outside default
rip inside passive
no rip inside default
route outside 0.0.0.0 0.0.0.0 209.165.201.7 1
timeout xlate 3:00:00 conn 1:00:00 half-closed 0:10:00 udp 0:02:00
timeout rpc 0:10:00 h323 0:05:00
timeout uauth 0:05:00 absolute
aaa-server TACACS+ protocol tacacs+
aaa-server RADIUS protocol radius
no snmp-server location
no snmp-server contact
snmp-server community public
no snmp-server enable traps
sysopt connection permit-ipsec
crypto ipsec transform-set strong esp-3des esp-sha-hmac
crypto map toSanJose 20 ipsec-isakmp
crypto map toSanJose 20 match address 90
crypto map toSanJose 20 set peer 209.165.200.229
crypto map toSanJose 20 set transform-set strong
crypto map toSanJose interface outside
isakmp policy 8 authentication rsa-sig
isakmp policy 8 encryption des
isakmp policy 8 hash sha
isakmp policy 8 group 1
isakmp policy 8 lifetime 86400
ca identity example.com 209.165.202.130:cgi-bin/pkiclient.exe
ca configure example.com ca 1 100 crloptional
telnet timeout 5
terminal width 80

```

## Configuring PIX Firewall 2 with a VeriSign CA




---

**Note** The following steps are nearly the same as those in the previous section "[Configuring PIX Firewall 1 with a VeriSign CA](#)" for configuring PIX Firewall 2. The differences are in Steps 1 and 2, and Steps 11 to 13, which are specific for the PIX Firewall 2 in this example.

---

Perform the following steps to configure PIX Firewall 2 for using a VeriSign CA:

---

**Step 1** Define a host name:

```
hostname SanJose
```

**Step 2** Define the domain name:

```
domain-name example.com
```

**Step 3** Generate the PIX Firewall RSA key pair:

```
ca generate rsa key 512
```

This command is not stored in the configuration.

**Step 4** Define VeriSign-related enrollment commands:

```
ca identity example.com 209.165.202.130  
ca configure example.com ca 2 20 crloptional
```

These commands are stored in the configuration. "2" is the retry period, "20" is the retry count, and the **crloptional** option disables CRL checking.

**Step 5** Authenticate the CA by obtaining its public key and its certificate:

```
ca authenticate example.com
```

This command is not stored in the configuration.

**Step 6** Request signed certificates from your CA for your PIX Firewall's RSA key pair:

```
ca enroll example.com abcdef
```

Before entering this command, contact your CA administrator because they will have to authenticate your PIX Firewall manually before granting its certificate.

"abcdef" is a challenge password. This can be anything. This command is not stored in the configuration.

**Step 7** Verify that the enrollment process was successful using the following command:

```
show ca certificate
```

**Step 8** Save keys and certificates, and the CA commands (except those indicated) in Flash memory:

```
ca save all  
write memory
```



---

**Note** Use the **ca save all** command any time you add, change, or delete **ca** commands in the configuration. This command is not stored in the configuration.

---

**Step 9** Configure an IKE policy:

```
isakmp enable outside  
isakmp policy 8 auth rsa-sig
```

**Step 10** Create a partial access list:

```
access-list 80 permit ip 10.0.0.0 255.0.0.0 192.168.12.0 255.255.255.0
```

**Step 11** Configure a transform set that defines how the traffic will be protected:

```
crypto ipsec transform-set strong esp-3des esp-sha-hmac
```

**Step 12** Define a crypto map:

```
crypto map newyork 10 ipsec-isakmp
```

```
crypto map newyork 10 match address 80
crypto map newyork 10 set transform-set strong
crypto map newyork 10 set peer 209.165.201.8
```

**Step 13** Apply the crypto map to the outside interface:

```
crypto map newyork interface outside
```

**Step 14** Tell the PIX Firewall to implicitly permit IPSec traffic:

```
sysopt connection permit-ipsec
```

---

[Example 7-4](#) lists the configuration for PIX Firewall 2. PIX Firewall default configuration values and certain CA commands are not displayed in a configuration listing.

#### Example 7-4 PIX Firewall 2 CA Configuration

```
nameif ethernet0 outside security0
nameif ethernet1 inside security100
nameif ethernet2 dmz security50
nameif ethernet3 perimeter security40
enable password 8Ry2YjIyt7RRXU24 encrypted
passwd 2KFQnbNIdI.2KYOU encrypted
hostname SanJose
domain-name example.com
fixup protocol ftp 21
fixup protocol http 80
fixup protocol smtp 25
fixup protocol h323 1720
fixup protocol rsh 514
fixup protocol sqlnet 1521
names
pager lines 24
no logging on
interface ethernet0 auto
interface ethernet1 auto
interface ethernet2 auto
interface ethernet3 auto
mtu outside 1500
mtu inside 1500
mtu dmz 1500
mtu perimeter 1500
ip address outside 209.165.200.229 255.255.255.224
ip address inside 10.0.0.1 255.0.0.0
ip address dmz 192.168.101.1 255.255.255.0
ip address perimeter 192.168.102.1 255.255.255.0
no failover
failover ip address outside 0.0.0.0
failover ip address inside 0.0.0.0
failover ip address dmz 0.0.0.0
failover ip address perimeter 0.0.0.0
arp timeout 14400
nat (inside) 0 10.0.0.0 255.0.0.0 0 0
nat 0 access-list 80
access-list 80 permit ip 10.0.0.0 255.0.0.0 192.168.12.0 255.255.255.0
no rip outside passive
no rip outside default
no rip inside passive
no rip inside default
no rip dmz passive
no rip dmz default
```

```

no rip perimeter passive
no rip perimeter default
route outside 0.0.0.0 0.0.0.0 209.165.200.228 1
timeout xlate 3:00:00 conn 1:00:00 half-closed 0:10:00 udp 0:02:00
timeout rpc 0:10:00 h323 0:05:00
timeout uauth 0:05:00 absolute
aaa-server TACACS+ protocol tacacs+
aaa-server RADIUS protocol radius
no snmp-server location
no snmp-server contact
snmp-server community public
no snmp-server enable traps
sysopt connection permit-ipsec
crypto ipsec transform-set strong esp-3des esp-sha-hmac
crypto map newyork 10 ipsec-isakmp
crypto map newyork 10 match address 80
crypto map newyork 10 set peer 209.165.201.8
crypto map newyork 10 set transform-set strong
crypto map newyork interface outside
isakmp policy 8 authentication rsa-sig
isakmp policy 8 encryption des
isakmp policy 8 hash sha
isakmp policy 8 group 1
isakmp policy 8 lifetime 86400
ca identity example.com 209.165.202.130:cgi-bin/pkiclient.exe
ca configure example.com ca 2 20 crloptional
telnet timeout 5
terminal width 80

```

### Using PIX Firewall with an In-House CA

For the general procedures to configure the PIX Firewall for a CA, see "[Using Certification Authorities](#)" in [Chapter 6, "Configuring IPsec and Certification Authorities."](#) This section provides a specific example for the network illustrated in [Figure 7-3](#) and includes the following topics:

- [Scenario Description](#)
- [Configuring PIX Firewall 1 for an In-House CA](#)
- [Configuring PIX Firewall 2 for an In-House CA](#)

### Scenario Description

PIX Firewall supports the use of the following certification authorities (CAs):

- VeriSign support is provided through the VeriSign Private Certificate Services (PCS) and the OnSite service, which lets you establish an in-house CA system for issuing digital certificates.
- Entrust, Entrust VPN Connector, version 4.1 (build 4.1.0.337) or higher. The Entrust CA server is an in-house CA server solution.
- Baltimore Technologies, UniCERT Certificate Management System, version 3.1.2 or higher. The Baltimore CA server is an in-house CA server solution.
- Microsoft Windows 2000, specifically the Windows 2000 Advanced Server, version 5.00.2195 or higher. The Windows 2000 CA server is an in-house CA server solution.

These are all in-house CA servers, except for VeriSign, which provides both a public CA and a private CA solution.




---

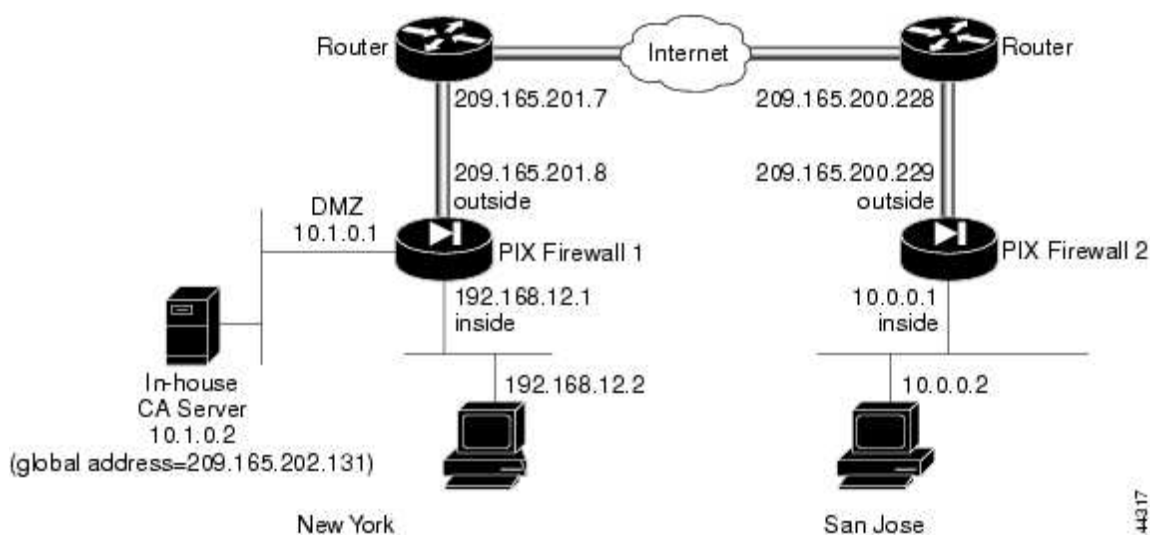
**Note** The example CA server address is to be used for example purposes only.

---

The in-house CA server in the following example is placed within the DMZ network of one PIX Firewall network (PIX Firewall 1). The VPN peer, PIX Firewall 2, should enroll and obtain its CA-signed certificates from the CA server residing within the network of PIX Firewall 1. PIX Firewall 2's enrollment and certificate request process is accomplished through the Internet.

The two VPN peers in the configuration examples are shown to be configured to enroll with and obtain their CA-signed certificates from the Entrust CA server. PIX Firewall 1 will obtain its certificate from the CA's local IP address of 10.1.0.2. PIX Firewall 2 will obtain its certificate from the CA's global IP address of 209.165.202.131. After each peer obtains its CA-signed certificate, tunnels can be established between the two VPN peers. The peers dynamically authenticate each other using the digital certificates.

Figure 7-3 VPN Tunnel Network



### Configuring PIX Firewall 1 for an In-House CA

Follow these steps to configure PIX Firewall 1 for use with an in-house CA. These steps are similar to the procedure shown in "[Using PIX Firewall with a VeriSign CA.](#)"

**Step 1** Define a host name:

```
hostname NewYork
```

**Step 2** Define the domain name:

```
domain-name example.com
```

**Step 3** Generate the PIX Firewall RSA key pair:

```
ca generate rsa key 512
```

This command is entered at the command line and does not get stored in the configuration.

**Step 4** Define CA-related enrollment commands:

```
ca identity abcd 10.1.0.2 10.1.0.2
ca configure abcd ra 2 20 crloptional
```

These commands are stored in the configuration. **2** is the retry period, **20** is the retry count, and the **crloptional** option disables CRL checking.



**Note** For a Microsoft CA server, specify the internal network address followed by a colon and the pathname to the server executable, such as 10.1.0.2:/CERTSRV/mscep/mscep.dll.

---

**Step 5** Authenticate the CA by obtaining its public key and its certificate:

```
ca authenticate abcd
```

This command is entered at the command line and does not get stored in the configuration.

**Step 6** Request signed certificates from your CA for your PIX Firewall's RSA key pair:

```
ca enroll abcd cisco
```

Before entering this command, contact your CA administrator because they will have to authenticate your PIX Firewall manually before granting its certificate.

"cisco" is a challenge password. This can be anything. This command is entered at the command line and does not get stored in the configuration.

**Step 7** Verify that the enrollment process was successful using the **show ca certificate** command:

```
show ca certificate
```

**Step 8** Save keys and certificates, and the CA commands (except those indicated) in Flash memory:

```
ca save all  
write memory
```



---

**Note** Use the **ca save all** command any time you add, change, or delete **ca** commands in the configuration. This command is not stored in the configuration.

---

**Step 9** Map a local IP address to a global IP address:

```
static (dmz, outside) 209.165.202.131 10.1.0.2 netmask 255.255.255.255
```

**Step 10** Permit the host (PIX Firewall 2) to access the global host via LDAP, port 389:

```
access-list globalhost permit tcp 209.165.200.229 255.255.255.255 host  
209.165.202.131 eq  
389
```

**Step 11** Permit the host (PIX Firewall 2) to access the global host via HTTP:

```
access-list globalhost permit tcp 209.165.200.229 255.255.255.255 host  
209.165.202.131 eq  
http
```

**Step 12** Create an access group to bind the access list to an interface:

```
access-group globalhost in interface outside
```

**Step 13** Configure an IKE policy:

```
isakmp enable outside  
isakmp policy 8 auth rsa-sig  
isakmp identity hostname
```

**Step 14** Configure a transform set that defines how the traffic will be protected:

```
crypto ipsec transform-set strong esp-3des esp-sha-hmac
```

**Step 15** Create a partial access list:

```
access-list 90 permit ip 192.168.12.0 255.255.255.0 10.0.0.0 255.0.0.0
```

**Step 16** Define a crypto map:

```
crypto map toSanJose 20 ipsec-isakmp
crypto map toSanJose 20 match address 90
crypto map toSanJose 20 set transform-set strong
crypto map toSanJose 20 set peer 209.165.200.229
```

**Step 17** Apply the crypto map to the outside interface:

```
crypto map toSanJose interface outside
```

**Step 18** Tell the PIX Firewall to implicitly permit IPSec traffic:

```
sysopt connection permit-ipsec
```

---

[Example 7-5](#) lists the configuration for PIX Firewall 1.

Example 7-5 PIX Firewall 1 VPN Tunnel Configuration

```
nameif ethernet0 outside security0
nameif ethernet1 inside security100
enable password 8Ry2YjIyt7RRXU24 encrypted
passwd 2KFQnbNIdI.2KYOU encrypted
hostname NewYork
domain-name example.com
fixup protocol ftp 21
fixup protocol http 80
fixup protocol smtp 25
fixup protocol h323 1720
fixup protocol rsh 514
fixup protocol sqlnet 1521
names
pager lines 24
no logging on
interface ethernet0 auto
interface ethernet1 auto
mtu outside 1500
mtu inside 1500
ip address outside 209.165.201.8 255.255.255.224
ip address inside 192.168.12.1 255.255.255.0
no failover
failover ip address outside 0.0.0.0
failover ip address inside 0.0.0.0
arp timeout 14400
static (dmz, outside) 209.165.202.131 10.1.0.2 netmask 255.255.255.255
access-list globalhost permit tcp 209.165.200.229 255.255.255.255 host
209.165.202.131 eq
389
access-list globalhost permit tcp 209.165.200.229 255.255.255.255 host
209.165.202.131 eq
http
access-group globalhost in interface outside
nat 0 access-list 90
access-list 90 permit ip 192.168.12.0 255.255.255.0 10.0.0.0 255.0.0.0
no rip outside passive
no rip outside default
rip inside passive
no rip inside default
route outside 0.0.0.0 0.0.0.0 209.165.201.7 1
timeout xlate 3:00:00 conn 1:00:00 half-closed 0:10:00 udp 0:02:00
timeout rpc 0:10:00 h323 0:05:00
```



```
timeout uauth 0:05:00 absolute
aaa-server TACACS+ protocol tacacs+
aaa-server RADIUS protocol radius
no snmp-server location
no snmp-server contact
snmp-server community public
no snmp-server enable traps
sysopt connection permit-ipsec
crypto ipsec transform-set strong esp-3des esp-sha-hmac
crypto map toSanJose 20 ipsec-isakmp
crypto map toSanJose 20 match address 90
crypto map toSanJose 20 set peer 209.165.200.229
crypto map toSanJose 20 set transform-set strong
crypto map toSanJose interface outside
isakmp policy 8 authentication rsa-sig
isakmp policy 8 encryption des
isakmp policy 8 hash sha
isakmp policy 8 group 1
isakmp policy 8 lifetime 86400
ca identity abcd 10.1.0.2 10.1.0.2
ca configure abcd ra 1 100 crloptional
telnet timeout 5
terminal width 80
```

## Configuring PIX Firewall 2 for an In-House CA

Follow these steps to configure PIX Firewall 2:

---

**Step 1** Define a host name:

```
hostname SanJose
```

**Step 2** Define the domain name:

```
domain-name example.com
```

**Step 3** Configure an IKE policy:

```
isakmp enable outside
isakmp policy 8 auth rsa-sig
```

**Step 4** Define CA-related enrollment commands:

```
ca identity abcd 209.165.202.131 209.165.202.131
ca configure abcd ra 2 20 crloptional
```

These commands are stored in the configuration. **2** is the retry period, **20** is the retry count, and the **crloptional** option disables CRL checking.



---

**Note** For a Microsoft CA server, specify the external (global) network address followed by a colon and the pathname to the server executable, such as 209.165.202.131:/certserv/mscep/mscep.dll.

---

**Step 5** Generate the PIX Firewall RSA key pair:

```
ca generate rsa key 512
```

This command is entered at the command line and does not get stored in the configuration.

**Step 6** Get the public key and the certificate of the CA server:

```
ca authenticate abcd
```

This command is entered at the command line and does not get stored in the configuration.

**Step 7** Contact your CA administrator and send your certificate request:

```
ca enroll abcd cisco
```

"cisco" is a challenge password. This can be anything. This command is entered at the command line and does not get stored in the configuration.

**Step 8** Configure supported IPSec transforms:

```
crypto ipsec transform-set strong esp-3des esp-sha-hmac
```

**Step 9** Save keys and certificates, and the CA commands (except those indicated) in Flash memory:

```
ca save all  
write memory
```



---

**Note** Use the **ca save all** command any time you add, change, or delete **ca** commands in the configuration. This command is not stored in the configuration.

---

**Step 10** Create a partial access list:

```
access-list 80 permit ip 10.0.0.0 255.0.0.0 192.168.12.0 255.255.255.0
```

**Step 11** Define a crypto map:

```
crypto map newyork 20 ipsec-isakmp  
crypto map newyork 20 match address 80  
crypto map newyork 20 set transform-set strong  
crypto map newyork 20 set peer 209.165.201.8
```

**Step 12** Apply the crypto map to the outside interface:

```
crypto map newyork interface outside
```

**Step 13** Tell the PIX Firewall to implicitly permit IPSec traffic:

```
sysopt connection permit-ipsec
```

---

[Example 7-6](#) lists the configuration for PIX Firewall 2.

Example 7-6 PIX Firewall 2 VPN Tunnel Configuration

```
nameif ethernet0 outside security0  
nameif ethernet1 inside security100  
nameif ethernet2 dmz security50  
nameif ethernet3 perimeter security40  
enable password 8Ry2YjIyt7RRXU24 encrypted  
passwd 2KFQnbNIdI.2KYOU encrypted  
hostname SanJose  
domain-name example.com  
fixup protocol ftp 21  
fixup protocol http 80  
fixup protocol smtp 25  
fixup protocol h323 1720  
fixup protocol rsh 514  
fixup protocol sqlnet 1521  
names  
pager lines 24
```

```

no logging on
interface ethernet0 auto
interface ethernet1 auto
interface ethernet2 auto
interface ethernet3 auto
mtu outside 1500
mtu inside 1500
mtu dmz 1500
mtu perimeter 1500
ip address outside 209.165.200.229 255.255.255.224
ip address inside 10.0.0.1 255.0.0.0
ip address dmz 192.168.101.1 255.255.255.0
ip address perimeter 192.168.102.1 255.255.255.0
no failover
failover ip address outside 0.0.0.0
failover ip address inside 0.0.0.0
failover ip address dmz 0.0.0.0
failover ip address perimeter 0.0.0.0
arp timeout 14400
nat 0 access-list 80
access-list 80 permit ip 10.0.0.0 255.0.0.0 192.168.12.0 255.255.255.0
no rip outside passive
no rip outside default
no rip inside passive
no rip inside default
no rip dmz passive
no rip dmz default
no rip perimeter passive
no rip perimeter default
route outside 0.0.0.0 0.0.0.0 209.165.200.228 1
timeout xlate 3:00:00 conn 1:00:00 half-closed 0:10:00 udp 0:02:00
timeout rpc 0:10:00 h323 0:05:00
timeout uauth 0:05:00 absolute
aaa-server TACACS+ protocol tacacs+
aaa-server RADIUS protocol radius
no snmp-server location
no snmp-server contact
snmp-server community public
no snmp-server enable traps
sysopt connection permit-ipsec
crypto ipsec transform-set strong esp-3des esp-sha-hmac
crypto map newyork 10 ipsec-isakmp
crypto map newyork 10 match address 80
crypto map newyork 10 set peer 209.165.201.8
crypto map newyork 10 set transform-set strong
crypto map newyork interface outside
isakmp policy 8 authentication rsa-sig
isakmp policy 8 encryption des
isakmp policy 8 hash sha
isakmp policy 8 group 1
isakmp policy 8 lifetime 86400
ca identity abcd 209.165.202.131 209.165.202.131
ca configure abcd ra 1 100 crloptional
telnet timeout 5
terminal width 80

```

### Using an Encrypted Tunnel to Obtain Certificates

This section shows an example of how to perform CA enrollment and certificate requests via a site-to-site VPN tunnel between two PIX Firewall units (PIX Firewall 1 and 2). In the example, both PIX Firewall units enroll and request certificates from a CA server protected by PIX Firewall 1. PIX Firewall 2 enrolls and requests its certificate using an encrypted tunnel.

To accomplish this, you first establish a tunnel between the PIX Firewalls using a pre-shared key. You then use this tunnel to enroll and request the certificate for PIX Firewall 2. After obtaining a certificate, clear the IKE and IPSec SAs on both units and then configure them to use digital certificates.



---

**Note** The example CA server address is to be used for example purposes only.

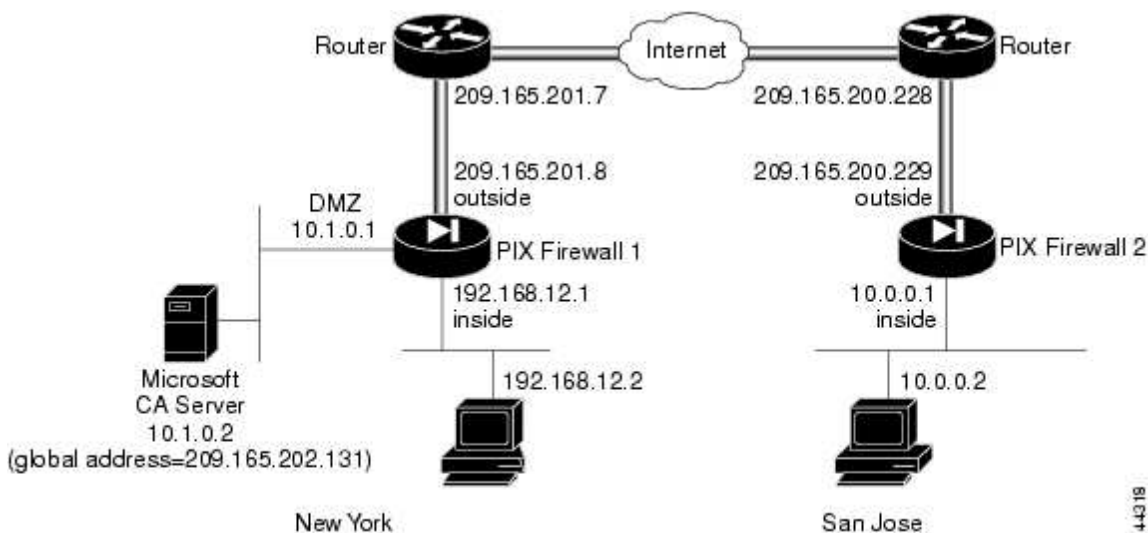
---

This section includes the following topics:

- [Establishing a Tunnel Using a Pre-Shared Key](#)
- [Establishing a Tunnel with a Certificate](#)

This example uses the network diagram shown in [Figure 7-4](#).

Figure 7-4 VPN Tunnel Network



### Establishing a Tunnel Using a Pre-Shared Key

This section describes how to establish a tunnel using a pre-shared key. It includes the following topics:

- [PIX Firewall 1 Configuration](#)
- [PIX Firewall 2 Configuration](#)

#### PIX Firewall 1 Configuration

Follow these steps to configure PIX Firewall 1:

---

**Step 1** Define a host name:

```
hostname NewYork
```

**Step 2** Define the domain name:

```
domain-name example.com
```

**Step 3** Configure an IKE policy:

```
isakmp enable outside
isakmp policy 8 auth pre-share
isakmp key cisco address 209.165.200.229 netmask 255.255.255.255
```

**Step 4** Create a partial access list:

```
access-list 90 permit ip host 10.1.0.2 host 209.165.200.229
```

**Step 5** Configure NAT 0:

```
nat (dmz) 0 access-list 90
```

**Step 6** Configure a transform set that defines how the traffic will be protected:

```
crypto ipsec transform-set strong esp-3des esp-sha-hmac
```

**Step 7** Define a crypto map:

```
crypto map toSanJose 20 ipsec-isakmp
crypto map toSanJose 20 match address 90
crypto map toSanJose 20 set transform-set strong
crypto map toSanJose 20 set peer 209.165.200.229
```

**Step 8** Apply the crypto map to the outside interface:

```
crypto map toSanJose interface outside
```

**Step 9** Tell the PIX Firewall to implicitly permit IPsec traffic:

```
sysopt connection permit-ipsec
```

**Step 10** Generate the PIX Firewall RSA key pair:

```
ca generate rsa key 512
```

This command is entered at the command line and does not get stored in the configuration.

**Step 11** Define CA-related enrollment commands:

```
ca identity abcd 10.1.0.2:/certsrv/mscep/mscep.dll
ca configure abcd ra 1 20 crloptional
```

These commands are stored in the configuration.



---

**Note** The **ca identity** command shown is specific to the Microsoft CA. The **ca identity** you use depends on the CA you are using.

---

**Step 12** Get the public key and the certificate of the CA server:

```
ca authenticate abcd
```

This command is entered at the command line and does not get stored in the configuration.

**Step 13** Contact your CA administrator and send your certificate request:

```
ca enroll abcd cisco
```

The string "cisco" is a challenge password. This can be anything. This command is entered at the command line and does not get stored in the configuration.

**Step 14** Save keys and certificates, and the **ca** commands (except those indicated) in Flash memory:

```
ca save all
write memory
```



**Note** Use the **ca save all** command any time you add, change, or delete **ca** commands in the configuration. This command is not stored in the configuration.

---

## PIX Firewall 2 Configuration

Follow these steps to configure PIX Firewall 2:

---

**Step 1** Define a host name:

```
hostname SanJose
```

**Step 2** Define the domain name:

```
domain-name example.com
```

**Step 3** Configure an IKE policy:

```
isakmp enable outside
isakmp policy 8 auth pre-share
isakmp key cisco address 209.165.201.8 netmask 255.255.255.255
```

**Step 4** Create a partial access list:

```
access-list 80 permit ip host 209.165.200.229 host 10.1.0.2
```

**Step 5** Configure NAT 0:

```
nat (inside) 0 access-list 80
```

**Step 6** Configure a transform set that defines how the traffic will be protected:

```
crypto ipsec transform-set strong esp-3des esp-sha-hmac
```

**Step 7** Define a crypto map:

```
crypto map newyork 20 ipsec-isakmp
crypto map newyork 20 match address 80
crypto map newyork 20 set transform-set strong
crypto map newyork 20 set peer 209.165.201.8
```

**Step 8** Apply the crypto map to the outside interface:

```
crypto map newyork interface outside
```

**Step 9** Tell the PIX Firewall to implicitly permit IPSec traffic:

```
sysopt connection permit-ipsec
```

**Step 10** Generate the PIX Firewall RSA key pair:

```
ca generate rsa key 512
```

This command is entered at the command line and does not get stored in the configuration.

**Step 11** Define CA-related enrollment commands:

```
ca identity abcd 10.1.0.2:/certsrv/mscep/mscep.dll
ca configure abcd ra 1 20 crloptional
```

These commands are stored in the configuration.



**Note** The **ca identity** command shown is specific to the Microsoft CA. The **ca identity** you use depends on the CA you are using.

---

**Step 12** Authenticate the CA by obtaining its public key and its certificate:

```
ca authenticate abcd
```

This command is entered at the command line and does not get stored in the configuration.

**Step 13** Request signed certificates from your CA for your PIX Firewall's RSA key pair. Before entering this command, contact your CA administrator because they will have to authenticate your PIX Firewall manually before granting its certificate:

```
ca enroll abcd cisco
```

"cisco" is a challenge password. This can be anything. This command is entered at the command line and does not get stored in the configuration.

**Step 14** Save keys and certificates, and the CA commands (except those indicated) in Flash memory:

```
ca save all  
write memory
```



---

**Note** Use the **ca save all** command any time you add, change, or delete **ca** commands in the configuration. This command is not stored in the configuration.

---

## Establishing a Tunnel with a Certificate

This section describes how to clear the SAs on each PIX Firewall and to establish a tunnel using a certificate. It includes the following topics:

- [PIX Firewall 1 Configuration](#)
- [PIX Firewall 2 Configuration](#)

### PIX Firewall 1 Configuration

Follow these steps to configure PIX Firewall 1:

---

**Step 1** Clear the IPsec SAs:

```
clear ipsec sa
```

**Step 2** Clear the ISAKMP SAs:

```
clear isakmp sa
```

**Step 3** Create a partial access list:

```
access-list 90 permit ip 192.168.12.0 255.255.255.0 10.0.0.0 255.0.0.0
```

**Step 4** Configure NAT 0:

```
nat (inside) 0 access-list 90
```

**Step 5** Specify the authentication method of rsa-signatures for the IKE policy:

```
isakmp policy 8 auth rsa-sig
```

---

### PIX Firewall 2 Configuration

Follow these steps to configure PIX Firewall 2:

---

**Step 1** Clear the IPsec SAs:

```
clear ipsec sa
```

**Step 2** Clear the ISAKMP SAs:

```
clear isakmp sa
```

**Step 3** Create a partial access list:

```
access-list 80 permit ip 10.0.0.0 255.0.0.0 192.168.12.0 255.255.255.0
```

**Step 4** Specify the authentication method of rsa-signatures for the IKE policy:

```
isakmp policy 8 auth rsa-sig
```

---

### Connecting to a Catalyst 6500 and Cisco 7600 Series IPsec VPN Services Module

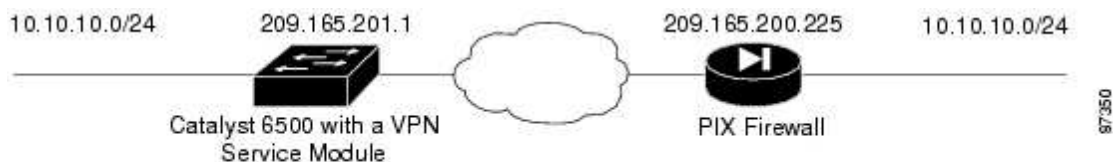
This section describes how to create an IPsec site-to-site tunnel between a Cisco Catalyst 6500 series switch with the Catalyst 6500 and Cisco 7600 Series IPsec VPN Services Module (VPNSM) and a PIX Firewall. It includes the following topics:

- [Scenario Description](#)
- [Configuring IPsec Using a Trunk Port](#)
- [Configuring IPsec Using a Routed Port](#)
- [Verifying Your Configuration](#)

#### Scenario Description

[Figure 7-5](#) illustrates the network setup used in this example configuration.

Figure 7-5 VPN Tunnel Between PIX Firewall and Catalyst 6500 with VPNSM



The VPNSM has two Gigabit Ethernet (GE) ports with no externally visible connectors. These ports are addressable for configuration purposes only. Port 1 is always the inside port. This port handles all traffic from and to the inside network. The second port (port 2) handles all traffic from and to the WAN or outside networks. These two ports are always configured in 802.1q trunking mode.

Packets are processed by a pair of VLANs, one Layer 3 (L3) inside VLAN and one Layer 2 (L2) outside VLAN. The packets are routed to the inside VLAN. After encrypting the packets the VPNSM uses the corresponding outside VLAN. In the decryption process, the packets from the outside to the inside are bridged to the VPNSM using the outside VLAN. After the VPNSM decrypts the packet and maps the VLAN to the corresponding inside VLAN, EARL routes the packet to the appropriate LAN port. The L3 inside VLAN and the L2 VLANs are joined together by issuing the **crypto connect vlan** command. There are three types of ports in the Catalyst 6500 series switches:

- Routed Ports—By default all Ethernet ports are routed ports. These ports have a hidden VLAN associated with them.
- Access Ports—These ports have an external or VLAN Trunking Protocol (VTP) VLAN associated with them. You can associate more than one port to a defined VLAN.
- Trunk Ports—These ports carry many external or VTP VLANs, on which all packets are encapsulated with an 802.1q header.



## Configuring IPsec Using a Trunk Port

Perform the following steps to configure an IPsec tunnel using the Catalyst 6500 trunk port configuration:

---

**Step 1** Add the inside VLANs to the inside port of the VPN SM. Assuming that the VPN SM is on slot 3, use VLAN 100 as the inside VLAN and VLAN 200 as the outside, and configure the GE ports on the VPN SM as follows.

```
interface GigabitEthernet3/1
no ip address
switchport
switchport trunk encapsulation dot1q
switchport trunk allowed vlan 1,100,1002-1005
switchport mode trunk
interface GigabitEthernet3/2
no ip address
switchport
switchport trunk encapsulation dot1q
switchport trunk allowed vlan 1,200,1002-1005
switchport mode trunk
```

**Step 2** Add the VLAN 100 interface and the interface where the tunnel will be terminated (in this case, FastEthernet2/2):

```
interface Vlan100
ip address 209.165.201.1 255.255.255.0
interface FastEthernet2/2
no ip address
switchport
switchport access vlan 200
switchport mode access
crypto connect vlan 100
```

**Step 3** Create an ACL (in this case, ACL 100) defining the traffic from the inside network 10.10.10.0/24 to the remote network 10.20.20.0/24:

```
access-list 100 permit ip 10.10.10.0 0.0.0.255 10.20.20.0 0.0.0.255
```

**Step 4** Define your Internet Security Association and Key Management Protocol (ISAKMP) policy proposals:

```
crypto isakmp policy 1
hash md5
authentication pre-share
group 2
```

**Step 5** In this example, pre-shared keys are used and defined by issuing the following command:

```
crypto isakmp key cisco address 209.165.200.225
```

**Step 6** Define your IPsec proposals:

```
crypto ipsec transform-set cisco esp-des esp-md5-hmac
```

**Step 7** Create your crypto map statement:

```
crypto map cisco 10 ipsec-isakmp
set peer 209.165.200.225
set transform-set cisco
match address 100
```

**Step 8** Apply the crypto map to the VLAN 100 interface:

```
interface vlan100
crypto map cisco
```

---

[Example 7-7](#) shows the complete configuration for the VPNSM.

#### Example 7-7 VPNSM Configuration

```
!--- Define Phase 1 policy.
crypto isakmp policy 1
hash md5
authentication pre-share
group 2
crypto isakmp key cisco address 209.165.200.225
!
!
!--- Define the encryption policy for this setup.
crypto ipsec transform-set cisco ESP-Des esp-md5-hmac
!
!--- Define a static crypto map entry for the peer
!--- with mode ipsec-isakmp.
!--- This indicates that Internet Key Exchange (IKE)
!--- will be used to establish the IPsec
!--- Security Associations (SAs) for protecting the traffic
!--- specified by this crypto map entry.
crypto map cisco 10 ipsec-isakmp
set peer 209.165.200.225
set transform-set cisco
match address 100
!
!
no spanning-tree vlan 100
!
!
!
interface GigabitEthernet1/1
no ip address
shutdown
snmp trap link-status
switchport
!
interface GigabitEthernet1/2
no ip address
shutdown
!
interface FastEthernet2/1
ip address 10.10.10.1 255.255.255.0
no keepalive
!
!--- This is the secure port which is configured in routed port mode.
!--- This routed port mode purposely does NOT have an L3 IP address
!--- configured, which is normal for the BITW process.
!--- The IP address was moved from this interface to the VLAN 100 to
!--- accomplish BITW, thereby bringing the VPN Services Module into
!--- the packet path. This will be the L2 port VLAN on which the
!--- VPN Services Module's outside port also belongs.
interface FastEthernet2/2
no ip address
snmp trap link-status
switchport
switchport access vlan 200
```

```

switchport mode access
crypto connect vlan 100
!
interface GigabitEthernet3/1
no ip address
snmp trap link-status
switchport
switchport trunk encapsulation dot1q
!--- VLAN 100 is defined as the Interface VLAN (IVLAN).
switchport trunk allowed vlan 1,100,1002-1005
switchport mode trunk
flowcontrol receive on
cdp enable
!
interface GigabitEthernet3/2
no ip address
snmp trap link-status
switchport
switchport trunk encapsulation dot1q
!--- The Port VLAN (PVLAN) configuration is handled by the VPN Services
Module
!--- transparently without user configuration
!--- or involvement. It also is not shown in the configuration.
!--- Note that for every IVLAN a corresponding PVLAN exists.
switchport trunk allowed vlan 1,200,1002-1005
switchport mode trunk
flowcontrol receive on
cdp enable
!
interface Vlan1
no ip address
shutdown
!
!--- This is the IVLAN configured for intercepting the traffic
!--- destined to the secure port on which the VPN Services Module's inside
port
!--- is the only port present.
Interface Vlan100
ip address 209.165.201.1 255.255.255.0
crypto map cisco
!
interface Vlan200
no ip address
!
ip classless
!--- Configure the routing so that the device
!--- knows how to reach its destination network.
ip route 0.0.0.0 0.0.0.0 172.18.124.1
!
!--- This is the crypto ACL.
access-list 100 permit ip 10.10.10.0 0.0.0.255 10.20.20.0 0.0.0.255

```

[Example 7-8](#) shows the complete configuration for the PIX Firewall.

#### Example 7-8 PIX Firewall Configuration

```

nameif ethernet0 outside security0
nameif ethernet1 inside security100
nameif ethernet2 intf2 security10
nameif ethernet3 intf3 security15
nameif ethernet4 intf4 security20

```

```
nameif ethernet5 intf5 security25
enable password 8Ry2YjIyt7RRXU24 encrypted
passwd 2KFQnbNIdI.2KYOU encrypted
hostname pix515B
domain-name cisco.com
fixup protocol ftp 21
fixup protocol http 80
fixup protocol h323 h225 1720
fixup protocol h323 ras 1718-1719
fixup protocol ils 389
fixup protocol rsh 514
fixup protocol rtsp 554
fixup protocol smtp 25
fixup protocol sqlnet 1521
fixup protocol sip 5060
fixup protocol skinny 2000
names
!--- Traffic to the router.
Access-list 100 permit ip 10.20.20.0 255.255.255.0 10.10.10.0 255.255.255.0
pager lines 24
interface ethernet0 auto
interface ethernet1 auto
interface ethernet2 auto shutdown
interface ethernet3 auto shutdown
interface ethernet4 auto shutdown
interface ethernet5 auto shutdown
mtu outside 1500
mtu inside 1500
mtu intf2 1500
mtu intf3 1500
mtu intf4 1500
mtu intf5 1500
ip address outside 209.165.200.225 255.255.255.0
ip address inside 10.20.20.1 255.255.255.0
ip address intf2 127.0.0.1 255.255.255.255
ip address intf3 127.0.0.1 255.255.255.255
ip address intf4 127.0.0.1 255.255.255.255
ip address intf5 127.0.0.1 255.255.255.255
ip audit info action alarm
ip audit attack action alarm
no failover
failover timeout 0:00:00
failover poll 15
failover ip address outside 0.0.0.0
failover ip address inside 0.0.0.0
failover ip address intf2 0.0.0.0
failover ip address intf3 0.0.0.0
failover ip address intf4 0.0.0.0
failover ip address intf5 0.0.0.0
pdm history enable
arp timeout 14400
access-list host1 permit icmp any any
access-group host1 in interface outside
route outside 0.0.0.0 0.0.0.0 14.36.1.1 1
timeout xlate 3:00:00
timeout conn 1:00:00 half-closed 0:10:00 udp 0:02:00 rpc 0:10:00 h323
0:05:00 sip 0:30:00 sip_media 0:02:00
timeout uauth 0:05:00 absolute
aaa-server TACACS+ protocol tacacs+
AAA-server RADIUS protocol radius
```

```

AAA-server LOCAL protocol local
no snmp-server location
no snmp-server contact
snmp-server community public
no snmp-server enable traps
floodguard enable
!--- IPsec policies.
sysopt connection permit-ipsec
no sysopt route dnat
crypto ipsec transform-set cisco esp-des esp-md5-hmac
crypto map cisco 10 ipsec-isakmp
crypto map cisco 10 match address 100
crypto map cisco 10 set peer 209.165.201.1
crypto map cisco 10 set transform-set cisco
crypto map cisco interface outside
!--- IKE policies.
isakmp enable outside
isakmp key ***** address 209.165.201.1 netmask 255.255.255.255
isakmp policy 1 authentication pre-share
isakmp policy 1 encryption des
isakmp policy 1 hash md5
isakmp policy 1 group 2
isakmp policy 1 lifetime 86400
telnet timeout 5
ssh timeout 5
terminal width 80
Cryptochecksum:02a61666fbc808eaf2ba99b69d544df7
: end
[OK]

```

### Configuring IPsec Using a Routed Port

Perform the following steps to configure IPsec using the routed port configuration on the Catalyst 6500 VPN Services Module.

---

**Step 1** Add the inside VLANs to the inside port of the VPNSM. Assuming that the VPNSM is on slot 3, use VLAN 100 as the inside VLAN and VLAN 200 as the outside, and configure the GE ports on the VPNSM as follows.

```

interface GigabitEthernet3/1
no ip address
switchport
switchport trunk encapsulation dot1q
switchport trunk allowed vlan 1,100,1002-1005
switchport mode trunk
interface GigabitEthernet3/2
no ip address
switchport
switchport trunk encapsulation dot1q
switchport trunk allowed vlan 1,200,1002-1005
switchport mode trunk

```

**Step 2** Add the VLAN 100 interface, and the interface where the tunnel will be terminated (in this case, FastEthernet2/2):

```

interface Vlan100
ip address 209.165.201.1 255.255.255.0
interface FastEthernet2/2
no ip address
crypto connect vlan 100

```

**Step 3** Create an ACL (in this case, ACL 100) defining the traffic from the inside network 10.10.10.0/24 to the remote network 10.20.20.0/24:

```
access-list 100 permit ip 10.10.10.0 0.0.0.255 10.20.20.0 0.0.0.255
```

**Step 4** Define your ISAKMP policy proposals:

```
crypto isakmp policy 1
hash md5
authentication pre-share
group 2
```

**Step 5** In this example, pre-shared keys are used and defined by issuing the following command:

```
crypto isakmp key cisco address 209.165.200.225
```

**Step 6** Define your IPSec proposals:

```
crypto ipsec transform-set cisco esp-des esp-md5-hmac
```

Create your crypto map statement.

```
crypto map cisco 10 ipsec-isakmp
  set peer 209.165.200.225
  set transform-set cisco
  match address 100
```

**Step 7** Apply the crypto map to the VLAN 100 interface:

```
interface vlan100
crypto map cisco
```

---

[Example 7-9](#) shows the complete configuration for the VPN SM.

**Example 7-9 Catalyst 6500 Configuration**

```
!--- Define Phase 1 policy.
crypto isakmp policy 1
hash md5
authentication pre-share
group 2
crypto isakmp key cisco address 209.165.200.225
!
!
!--- Define the encryption policy for this setup.
crypto ipsec transform-set cisco ESP-Des esp-md5-hmac
!
!--- Define a static crypto map entry for the peer
!--- with mode ipsec-isakmp. This indicates that IKE
!--- will be used to establish the IPsec
!--- SAs for protecting the traffic
!--- specified by this crypto map entry.

crypto map cisco 10 ipsec-isakmp
set peer 209.165.200.225
set transform-set cisco
match address 100
!
!
no spanning-tree vlan 100
!
!
!
```

```

interface GigabitEthernet1/1
no ip address
shutdown
snmp trap link-status
switchport
!
interface GigabitEthernet1/2
no ip address
shutdown
!
interface FastEthernet2/1
ip address 10.10.10.1 255.255.255.0
no keepalive
!
!--- This is the secure port which is configured in routed port mode.
!--- This routed port mode does not have an L3 IP address
!--- configured, which is normal for the BITW process.
!--- The IP address was moved from this interface to the VLAN 100 to
!--- accomplish BITW, thereby bringing the VPN Services Module into
!--- the packet path. This will be the L2 port VLAN on which the
!--- VPN Services Module's outside port also belongs.
Interface FastEthernet2/2
no ip address
crypto connect vlan 100
!
interface GigabitEthernet3/1
no ip address
snmp trap link-status
switchport
switchport trunk encapsulation dot1q
!--- VLAN 100 is defined as the IVLAN.
switchport trunk allowed vlan 1,100,1002-1005
switchport mode trunk
flowcontrol receive on
cdp enable
!
interface GigabitEthernet3/2
no ip address
snmp trap link-status
switchport
switchport trunk encapsulation dot1q
!--- The PVLAN configuration is handled by the VPN Services Module
!--- transparently without user configuration
!--- or involvement. It also is not shown in the configuration.
!--- Note that for every IVLAN a corresponding PVLAN exists.
switchport trunk allowed vlan 1,200,1002-1005
switchport mode trunk
flowcontrol receive on
cdp enable
!
interface Vlan1
no ip address
shutdown
!
!--- This is the IVLAN configured for intercepting the traffic
!--- destined to the secure port on which the VPN Services Module's inside
port
!--- is the only port present.
Interface Vlan100
ip address 209.165.201.1 255.255.255.0

```

```

crypto map cisco
!
interface Vlan200
no ip address
!
ip classless
!--- Configure the routing so that the device
!--- knows how to reach its destination network.
ip route 0.0.0.0 0.0.0.0 172.18.124.1
ip route 10.20.20.0 255.255.255.0 209.165.200.225
!
!--- This is the crypto ACL.
Access-list 100 permit ip 10.10.10.0 0.0.0.255 10.20.20.0 0.0.0.255

```

[Example 7-10](#) shows the complete configuration for the PIX Firewall.

### Example 7-10 PIX Firewall Configuration

```

nameif ethernet0 outside security0
nameif ethernet1 inside security100
nameif ethernet2 intf2 security10
nameif ethernet3 intf3 security15
nameif ethernet4 intf4 security20
nameif ethernet5 intf5 security25
enable password 8Ry2YjIyt7RRXU24 encrypted
passwd 2KFQnbNIdI.2KYOU encrypted
hostname pix515B
domain-name cisco.com
fixup protocol ftp 21
fixup protocol http 80
fixup protocol h323 h225 1720
fixup protocol h323 ras 1718-1719
fixup protocol ils 389
fixup protocol rsh 514
fixup protocol rtsp 554
fixup protocol smtp 25
fixup protocol sqlnet 1521
fixup protocol sip 5060
fixup protocol skinny 2000
names
!--- Traffic to the router.
Access-list 100 permit ip 10.20.20.0 255.255.255.0 10.10.10.0 255.255.255.0
pager lines 24
interface ethernet0 auto
interface ethernet1 auto
interface ethernet2 auto shutdown
interface ethernet3 auto shutdown
interface ethernet4 auto shutdown
interface ethernet5 auto shutdown
mtu outside 1500
mtu inside 1500
mtu intf2 1500
mtu intf3 1500
mtu intf4 1500
mtu intf5 1500
ip address outside 209.165.200.225 255.255.255.0
ip address inside 10.20.20.1 255.255.255.0
ip address intf2 127.0.0.1 255.255.255.255
ip address intf3 127.0.0.1 255.255.255.255
ip address intf4 127.0.0.1 255.255.255.255
ip address intf5 127.0.0.1 255.255.255.255

```



```

ip audit info action alarm
ip audit attack action alarm
no failover
failover timeout 0:00:00
failover poll 15
failover ip address outside 0.0.0.0
failover ip address inside 0.0.0.0
failover ip address intf2 0.0.0.0
failover ip address intf3 0.0.0.0
failover ip address intf4 0.0.0.0
failover ip address intf5 0.0.0.0

pdm history enable
arp timeout 14400
access-list host1 permit icmp any any
access-group host1 in interface outside
route outside 0.0.0.0 0.0.0.0 14.36.1.1 1
timeout xlate 3:00:00
timeout conn 1:00:00 half-closed 0:10:00 udp 0:02:00 rpc 0:10:00 h323
    0:05:00 sip 0:30:00 sip_media 0:02:00
timeout uauth 0:05:00 absolute
AAA-server TACACS+ protocol tacacs+
AAA-server RADIUS protocol radius
AAA-server LOCAL protocol local
no snmp-server location
no snmp-server contact
snmp-server community public
no snmp-server enable traps
floodguard enable
!--- IPsec policies.
sysopt connection permit-ipsec
no sysopt route dnat
crypto ipsec transform-set cisco ESP-Des esp-md5-hmac
crypto map cisco 10 ipsec-isakmp
crypto map cisco 10 match address 100
crypto map cisco 10 set peer 209.165.201.1
crypto map cisco 10 set transform-set cisco
crypto map cisco interface outside
!--- IKE policies.
isakmp enable outside
isakmp key ***** address 209.165.201.1 netmask 255.255.255.255
isakmp policy 1 authentication pre-share
isakmp policy 1 encryption Des
isakmp policy 1 hash md5
isakmp policy 1 group 2
isakmp policy 1 lifetime 86400
telnet timeout 5
ssh timeout 5
terminal width 80
Cryptochecksum:02a61666fbc808eaf2ba99b69d544df7
: end
[OK]

```

## Verifying Your Configuration

You can use the following commands to confirm that your configuration is working properly.

To display the settings used by the current IPsec SAs, enter the following command:

```
show crypto ipsec sa
```

To display all the current IKE SAs at a peer, enter the following command:

```
show crypto isakmp sa
```

To display the VLAN associated with the crypto configuration, enter the following command:

```
show crypto vlan
```

To display the VPNSM statistics, enter the following command:

```
show crypto eli
```

### Manual Configuration with NAT

In this example, two PIX Firewall units are used to create a Virtual Private Network (VPN) between the networks on each PIX Firewall unit's inside interface. This section includes the following topics:

- [PIX Firewall 1 Configuration](#)
- [PIX Firewall 2 Configuration](#)

This network is part of an intranet. In this example, the VPN is created without the use of IKE or a CA and pre-shared keys are used.

### PIX Firewall 1 Configuration

Follow these steps to program the PIX Firewall 1 unit for IPsec:

---

**Step 1** Create a **crypto map** command statement.

**Step 2** Create the **access-list** command entries to select traffic for this policy.



---

**Note** For manual keying, only one **access-list permit** command statement is permitted in the configuration.

---

**Step 3** Create the transform set for the **crypto** command statement entry.

**Step 4** Define cryptographic state informations. These include SPI, and the necessary keys for manual keying and policy negotiation for ISAKMP.

**Step 5** Repeat Steps 1-4 for each group of policies.

**Step 6** Associate the **crypto map** command statement with an interface.

---

[Example 7-11](#) lists the configuration for PIX Firewall 1.

Example 7-11 Two Interfaces with IPsec—PIX Firewall 1 Configuration

```
nameif ethernet0 outside security0
nameif ethernet1 inside security100
interface ethernet0 auto
interface ethernet1 auto
ip address outside 192.168.1.1 255.255.255.0
ip address inside 10.1.1.1 255.255.255.0
enable password 8Ry2YjIyt7RRXU24 encrypted
passwd 2KFQnbNIdI.2KYOU encrypted
hostname pixfirewall
fixup protocol ftp 21
fixup protocol http 80
fixup protocol smtp 25
fixup protocol h323 1720
fixup protocol rsh 514
fixup protocol sqlnet 1521
access-list 10 permit ip host 192.168.128.3 host 209.165.200.225
```

```

no failover
failover ip address outside 0.0.0.0
failover ip address inside 0.0.0.0
names
pager lines 24
no logging timestamp
logging console debugging
logging monitor errors
logging buffered errors
no logging trap
logging facility 20
mtu outside 1500
mtu inside 1500
arp timeout 14400
nat (inside) 1 0 0
global (outside) 1 192.168.1.100-192.168.1.150
static (inside,outside) 192.168.128.3 10.1.1.3 netmask 255.255.255.255 0 0
no rip outside passive
no rip outside default
no rip inside passive
no rip inside default
route outside 0.0.0.0 0.0.0.0 192.168.1.49 1
timeout xlate 3:00:00 conn 1:00:00 half-closed 0:10:00 udp 0:02:00
timeout rpc 0:10:00 h323 0:05:00
timeout uauth 0:05:00 absolute
no snmp-server location
no snmp-server contact
snmp-server community public
no snmp-server enable traps
sysopt connection tcpmss 1380
sysopt connection permit-ipsec
crypto ipsec transform-set myset ah-md5-hmac esp-des
crypto map mymap 10 ipsec-manual
crypto map mymap 10 match address 10
crypto map mymap 10 set peer 192.168.1.100
crypto map mymap 10 set transform-set myset
crypto map mymap 10 set session-key inbound ah 400
123456789A123456789A123456789A12
crypto map mymap 10 set session-key outbound ah 300
123456789A123456789A123456789A12
crypto map mymap 10 set session-key inbound esp 400 cipher abcd1234abcd1234
crypto map mymap 10 set session-key outbound esp 300 cipher
abcd1234abcd1234
telnet timeout 5
terminal width 80
crypto map mymap interface outside

```

## PIX Firewall 2 Configuration

Follow these steps to program the PIX Firewall 2 unit for IPSec:

---

**Step 1** Create a **crypto map** command statement.

**Step 2** Create the **access-list** command entries to select traffic for this policy.




---

**Note** For manual keying, only one **access-list permit** command statement is permitted in the configuration.

---

**Step 3** Create the transform set for the **crypto** command statement entry.

**Step 4** Define cryptographic state informations. These include SPI, and the necessary keys for manual keying and policy negotiation for ISAKMP.

**Step 5** Repeat Steps 1-4 for each group of policies.

**Step 6** Associate the **crypto map** command statement with an interface.

---

[Example 7-12](#) lists the configuration for PIX Firewall 2.

#### Example 7-12 Two Interfaces with IPSec—PIX Firewall 2 Configuration

```
nameif ethernet0 outside security0
nameif ethernet1 inside security100
interface ethernet0 auto
interface ethernet1 auto
ip address outside 209.165.201.3 255.255.255.224
ip address inside 10.0.0.3 255.255.255.0
enable password 8Ry2YjIyt7RRXU24 encrypted
passwd 2KFQnbNIdI.2KYOU encrypted
hostname pixfirewall
fixup protocol ftp 21
fixup protocol http 80
fixup protocol smtp 25
fixup protocol h323 1720
fixup protocol rsh 514
fixup protocol sqlnet 1521
access-list 10 permit ip host 209.165.200.225 host 192.168.128.3
no failover
failover ip address outside 0.0.0.0
failover ip address inside 0.0.0.0
names
pager lines 24
no logging timestamp
logging console debugging
logging monitor errors
logging buffered errors
no logging trap
logging facility 20
mtu outside 1500
mtu inside 1500
arp timeout 14400
nat (inside) 1 0 0
static (inside,outside) 209.165.200.225 10.0.0.3 netmask 255.255.255.255 0
0
route outside 0.0.0.0 0.0.0.0 192.168.1.49 1
route inside 10.0.0.0 255.255.255.0 10.0.0.3 1
timeout xlate 3:00:00 conn 1:00:00 half-closed 0:10:00 udp 0:02:00
timeout rpc 0:10:00 h323 0:05:00
timeout uauth 0:05:00 absolute
no snmp-server location
no snmp-server contact
snmp-server community public
no snmp-server enable traps
no rip outside passive
no rip outside default
no rip inside passive
no rip inside default
sysopt connection tcpmss 1380
crypto ipsec transform-set myset ah-md5-hmac esp-des
crypto map mymap 10 ipsec-manual
crypto map mymap 10 match address 10
```

```
crypto map mymap 10 set peer 192.168.1.1
crypto map mymap 10 set transform-set myset
crypto map mymap 10 set session-key inbound ah 300
123456789A123456789A123456789A12
crypto map mymap 10 set session-key outbound ah 400
123456789A123456789A123456789A12
crypto map mymap 10 set session-key inbound esp 300 cipher abcd1234abcd1234
crypto map mymap 10 set session-key outbound esp 400 cipher
abcd1234abcd1234
telnet timeout 5
terminal width 80
```