

Internet Explorer Compatibility View - Turn On or Off

Information

Websites that were designed for earlier versions of **Internet Explorer** might not display correctly in **IE8, IE9, IE10, or IE11**. When you turn on **Compatibility View**, the webpage you're viewing, as well as any other webpages within the website's domain, will be displayed as if you were using an earlier version of Internet Explorer.

This tutorial will show you how to add (turn on) and remove (turn off) websites to be displayed in Compatibility View.

Note

Not all website display problems are caused by browser incompatibility. Interrupted Internet connections, heavy traffic, or website bugs can also affect how a webpage is displayed.

OPTION ONE

Through the Internet Explorer Address Bar

NOTE: *If Internet Explorer recognizes a webpage that is not compatible, you will see the Compatibility View icon button*



on the Address bar.

1. To Turn On Compatibility View for a Website in Internet Explorer

A) Click/tap on the unhighlighted Compatibility View icon button. (See screenshot below)

NOTE: *The webpage will now reload with Compatibility View turned on for it, and the website will be added to the list in compatibility view settings (Option Three below).*



2. To Turn Off Compatibility View for a Website in Internet Explorer

A) Click/tap on the highlighted (blue) Compatibility View icon button. (See screenshot below)

NOTE: *The webpage will now reload with Compatibility View turned off for it, and the website will be removed from the list in compatibility view settings (Option Three below).*



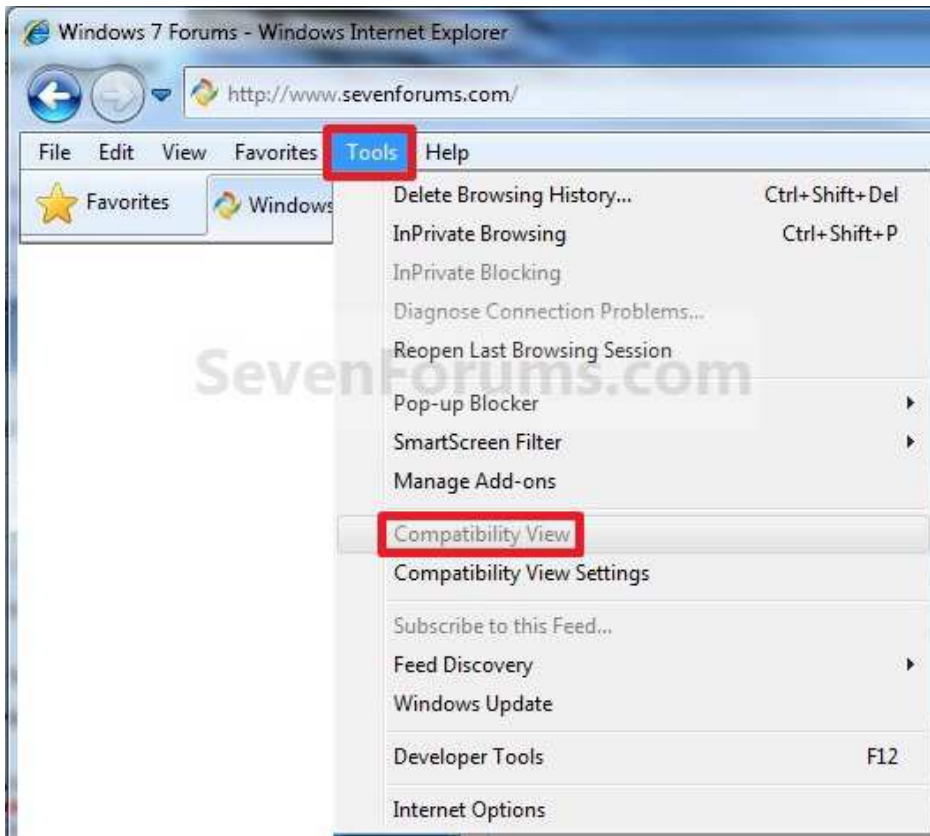
OPTION TWO

Through the Tools Menu

NOTE: *This will let you turn on or off Compatibility View for the current webpage.*

1. Click/tap on the **Tools Menu Bar** (ALT+T) item. (See screenshot below)

NOTE: *If **Compatibility View** is grayed out, then the webpage has no compatibility issues and does not need to have Compatibility View turned on for it. You can still use **METHOD THREE** below to turn on Compatibility View for it though if you like.*

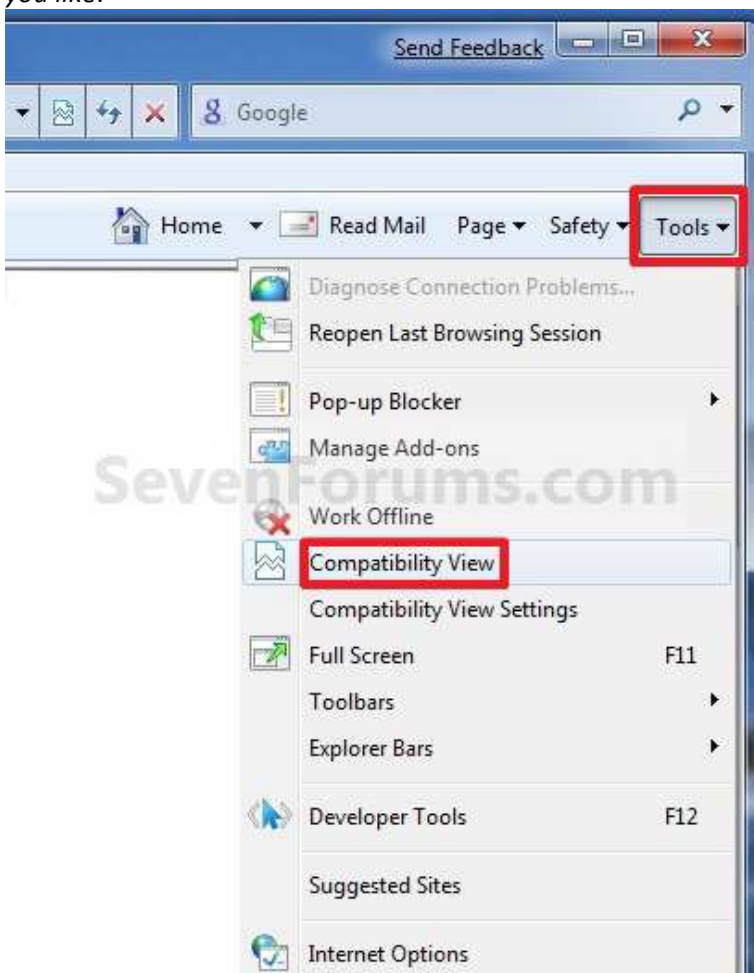


A) Go to step 3.

OR

2. Click/tap on the **Tools Command Bar** button. (See screenshot below)

NOTE: If **Compatibiliy View** is grayed out, then the webpage has no compatibility issues and does not need to have Compatibility View turned on for it. You can still use **METHOD THREE** below to turn on Compatibility View for it though if you like.



3. To Turn On Compatibility View for a Website in Internet Explorer

A) Click/tap on **Compatibility View** to check it. (See screenshots above)

NOTE: The webpage will now reload with Compatibility View turned on for it, and the website will be added to the list in compatibility view settings (Option Three below).

4. To Turn Off Compatibility View for a Website in Internet Explorer

A) Click/tap on **Compatibility View** to uncheck it. (See screenshots above)

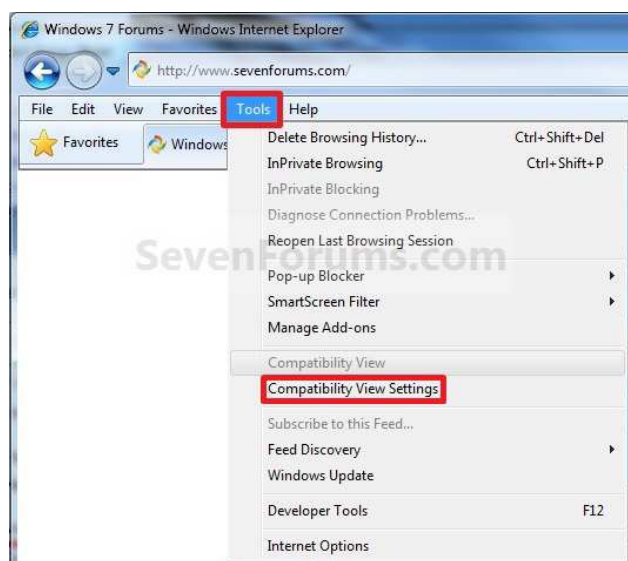
NOTE: The webpage will now reload with Compatibility View turned off for it, and the website will be removed from the list in compatibility view settings (Option Three below).

OPTION THREE

Through Compatibility View Settings

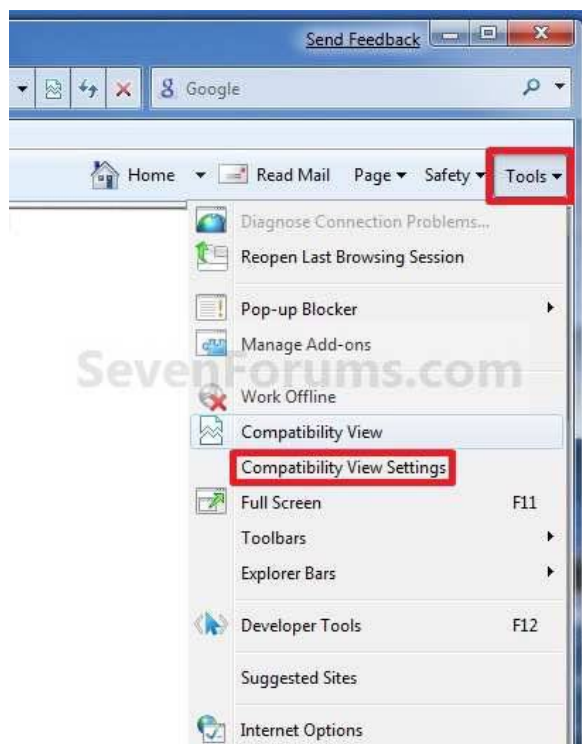
NOTE: This will let you turn on or off Compatibility View for a webpage by adding or removing the webpage address from the Compatibility View list.

1. Click/tap on the **Tools Menu Bar** (ALT+T) item, and go to **step 3** below. (See screenshot below)



OR

2. Click/tap on the **Tools Command Bar** button. (See screenshot below)

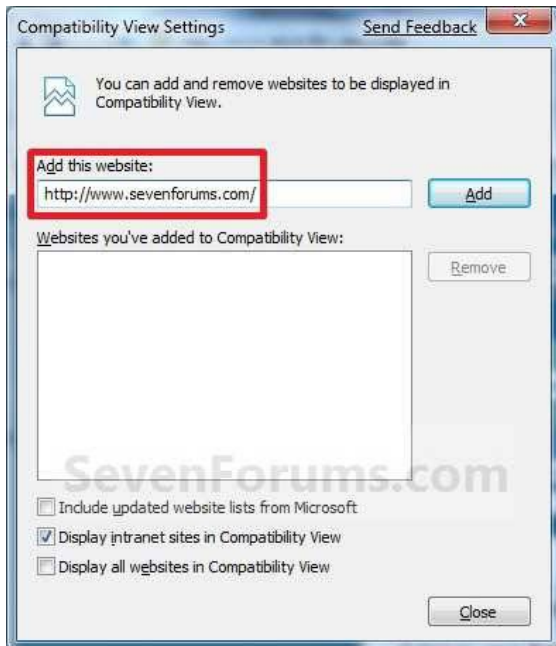


3. Click/tap on **Compatibility View Settings**. (See screenshots above)

4. To Add a Website to the Compatibility View List in Internet Explorer

A) Type in the webpage address that you want to turn on Compatibility View for, and click/tap on the **Add** button. (See screenshot below)

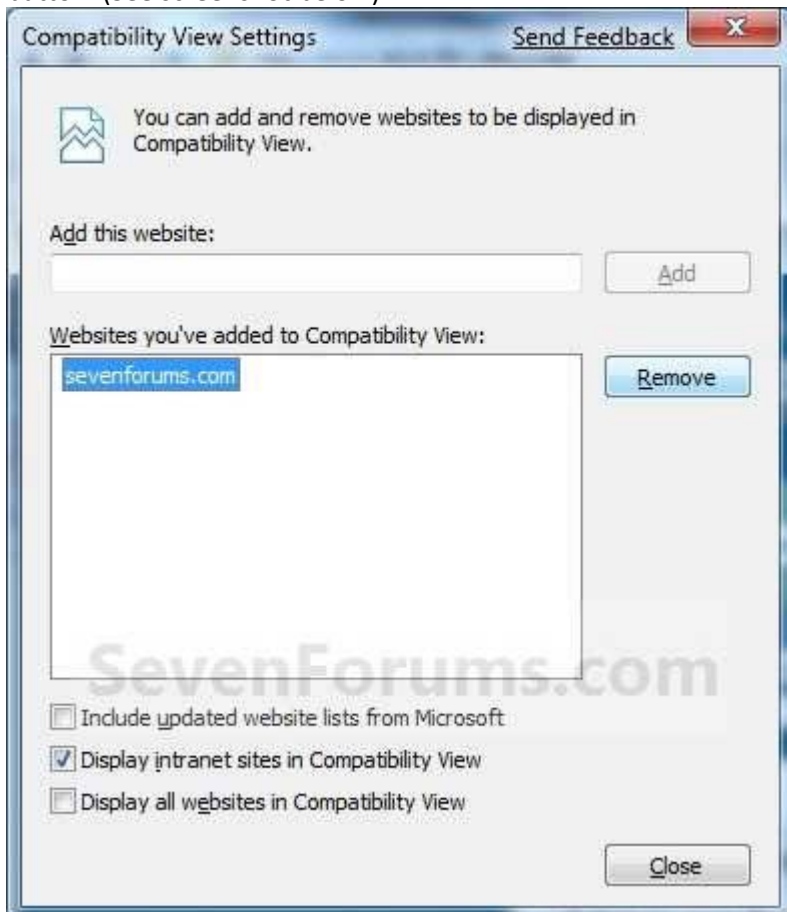
NOTE: The current webpage address will automatically be filled in for you. Just clear it if you want to add a different address instead.



B) Go to step 6.

5. To Remove a Website from the Compatibility View List in Internet Explorer

A) Select a listed webpage address that you want to turn off Compatibility View for, and click/tap on the **Remove** button. (See screenshot below)



6. Click/tap on the **Close** button. (See screenshots above)