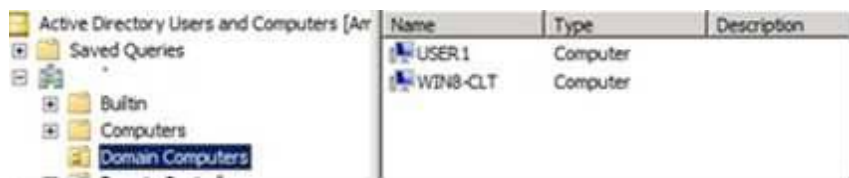


Adding shortcuts on desktop using Group Policy Preferences in Windows 8 and Windows 8.1

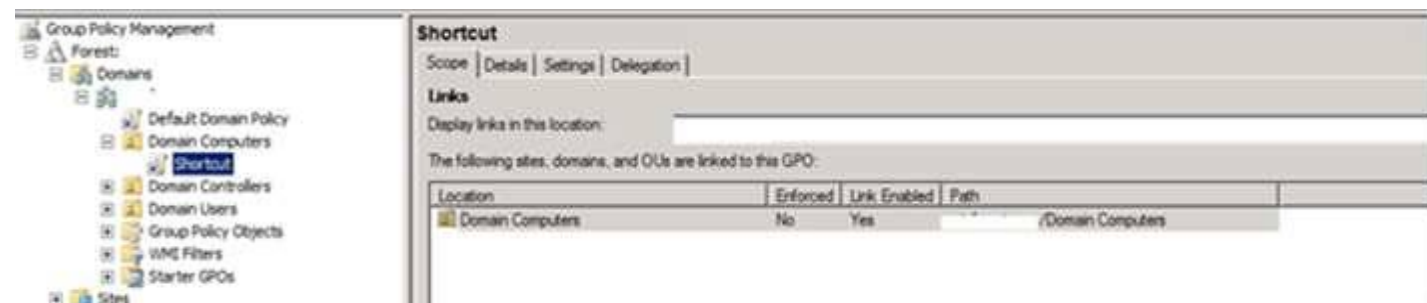
<https://blogs.technet.microsoft.com/askds/2014/02/17/adding-shortcuts-on-desktop-using-group-policy-preferences-in-windows-8-and-windows-8-1/>

We very often get calls from customers who are evaluating Windows 8/Windows 8.1 for deployment, but are concerned about some of the changes in the UI that may confuse their users. A typical concern we hear is that users are used to having shortcuts on the desktop for Computer, Documents, and Network. So, I wanted to take a minute to show you how you can easily add those shortcuts (or others) to desktops using Group Policy Preferences.

I have an OU in my domain called “Domain Computers”, which has Windows 8 machines.



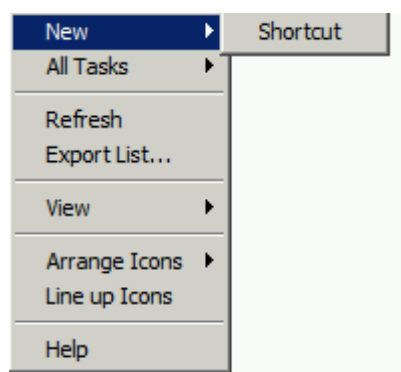
The next step is to create a policy and link in to the “Domain Computers” OU. In this case it is called “Shortcut”



Edit the policy and go to the following location:

Computer Configuration — > Preferences — > Windows Settings — > Shortcuts

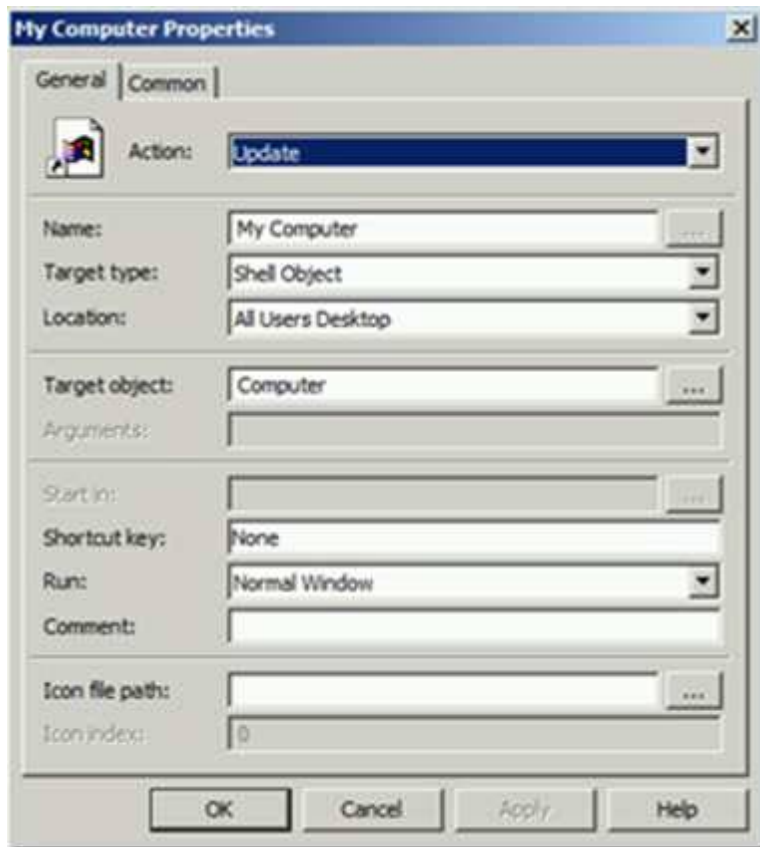
Highlight Shortcuts and on the right pane, right click and select new Shortcut



In the ‘New Shortcut Properties’, make the following changes so the values look like below:

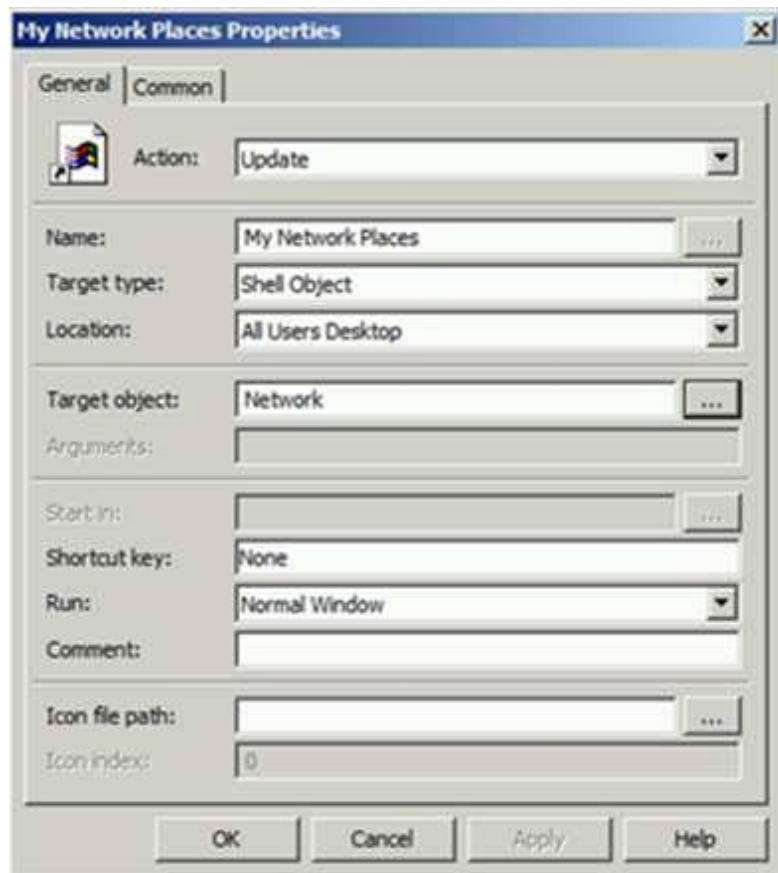
1. Action : Update
2. Target type : Shell Object
3. Location : All Users Desktop
4. For Target object, click on the browse option and then chose ‘Computer’
5. Name : My Computer

Leave rest of the options as default. Once you have made all the changes, it would look like below:



Similarly for Network the options are:

1. Action : Update
2. Target type : Shell Object
3. Location : All Users Desktop
4. For Target object, click on the browse option and then chose 'Network'
5. Name : My Network Places

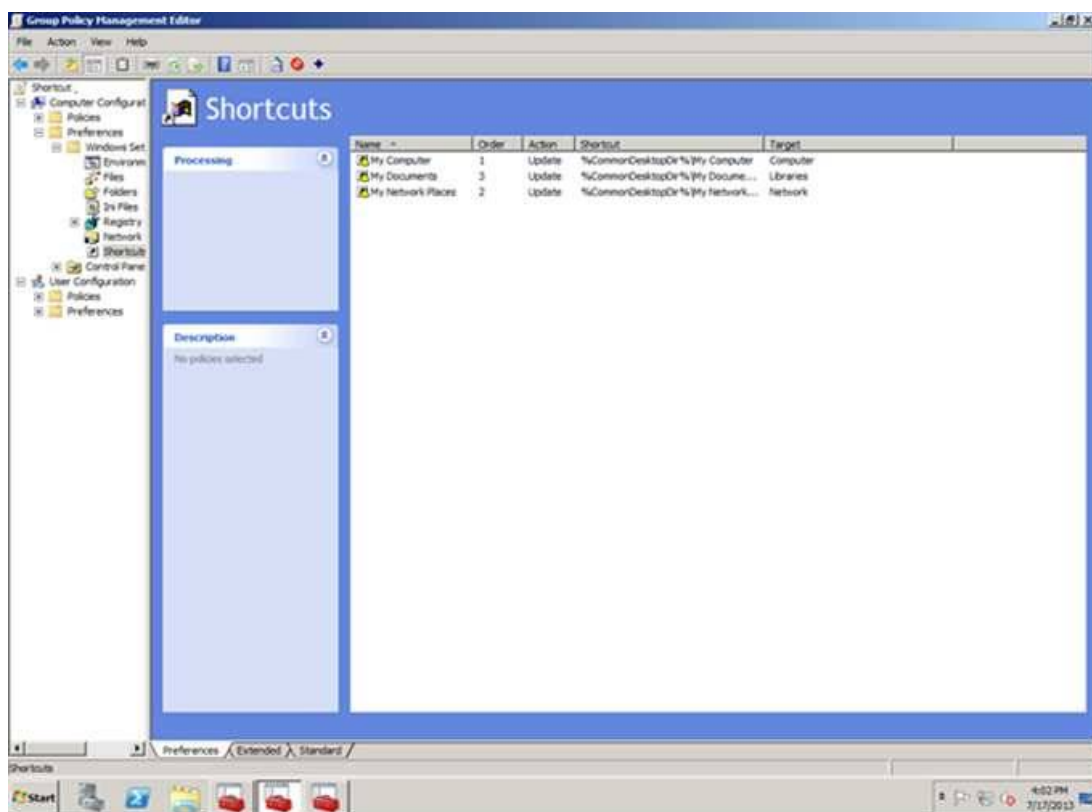


And for Libraries the options are:

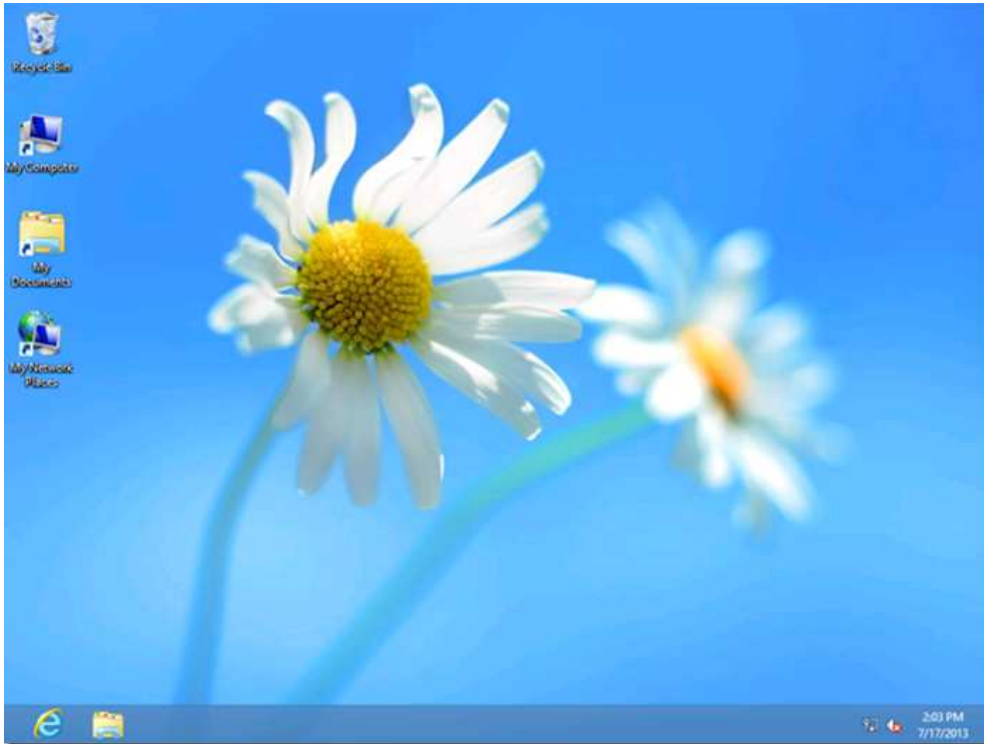
1. Action : Update
2. Target type : Shell Object
3. Location : All Users Desktop
4. For Target object, click on the browse option and then chose 'Libraries'
5. Name : My Documents



So we have the following three shortcuts



Restart the client and once logged in with a domain user, the desktop would have the three shortcuts as listed above and it would look something like below:



The above steps also work with Windows 8.1. Here is how it looks:

