

# 5 Ways | How to Fix Data Error Cyclic Redundancy Check

<https://www.easeus.com/resource/fix-data-error-cyclic-redundancy-check.html>

Applies to: Fix **Data Error Cyclic Redundancy Check** on the external hard drive, USB, SD card, and even HDD/SSDs in Windows.

On this page, you'll learn what is "Data error (cyclic redundancy check)" error, how to fix data CRC error on your device in 5 reliable ways.

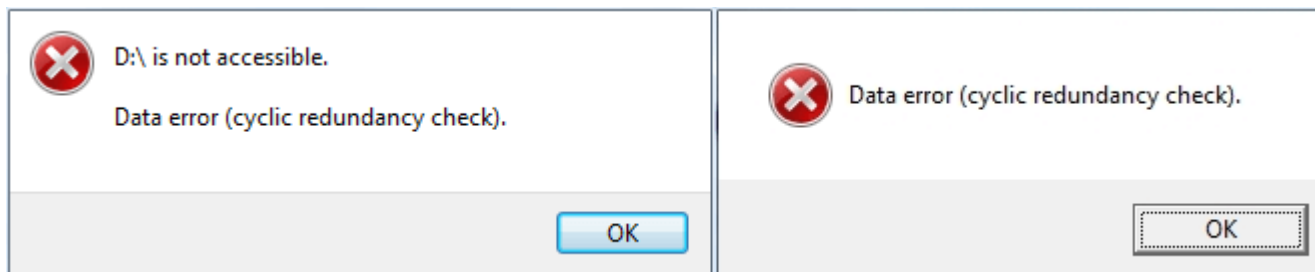
Workable Solutions	Step-by-step Troubleshooting
Fix 1. Fix Cyclic Redundancy Check Data Error via CHKDSK	CHKDSK can scan and repair file system corruption and bad sectors that cause the CRC error... <a href="#">Full steps</a>
Fix 2. Fix CRC Data Error using Disk Check	Disk Check utility can also fix file system errors. Open File Explorer, find the inaccessible hard drive... <a href="#">Full steps</a>
Fix 3. Remove CRC Error with System File Checker	System File Checker works to repair corrupted system files. Press Windows + R keys, type cmd... <a href="#">Full steps</a>
Fix 4. Format the Inaccessible Device	If your device became RAW with a CRC device error, try formatting the hard drive to troubleshoot... <a href="#">Full steps</a>
Fix 5. Look for Manual Repair	If the Cyclic Redundancy Check error can't be solved by using the disk repair tool. Use a manual repair... <a href="#">Full steps</a>

## Overview: What Is Data Error Cyclic Redundancy Check (CRC)

**# Definition:** According to Microsoft, Data Error Cyclic Redundancy Check, known as CRC error, indicates the operating system has found a drive with bad sectors or some intermittent problem on your storage devices.

**# Symptoms:** With Cyclic Redundancy Check error, you'll receive pop-up error messages as shown below.

- 1. "Drive is not accessible. Data error (cyclic redundancy check)."
- 2. "Virtual Disk Manager. Data error (cyclic redundancy check)."



**# Result:** Storage devices that contain the CRC error will become inaccessible, unopenable, RAW, not initialized.

According to Qiling data recovery experts, you should recover data first as some fixes may cause file loss. Follow to remove the CRC error on your own.

## Part 1. Recover Files from Data Error Cyclic Redundancy Check Device

Reliable [hard drive recovery software](#) - Deep Data Recovery enables you to directly recover files from the Cyclic Redundancy Check error with its powerful data recovery features:

### Deep Data Recovery

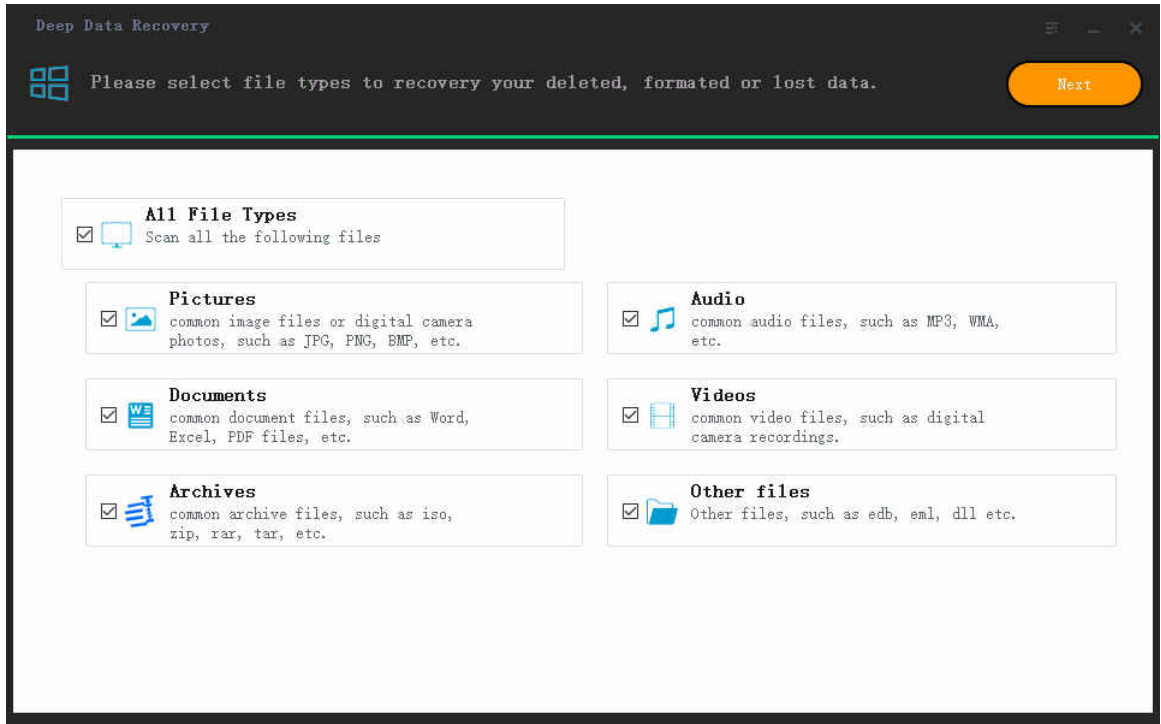
- Recover lost files from inaccessible cyclic redundancy check devices.
- [Recover files from recycle bin](#), SD card, internal/external HDD/SSD.
- Recover all types of files, like images, documents, videos, etc.
- Complete scan devices, find all hidden files on Windows & Mac.

- Easy to operate, protect your privacy.
- [Free Download](#)
- Windows 11/10/8/7, 100% Secure

Follow the 3 steps to restore your data from the device with Cyclic Redundancy Check error:

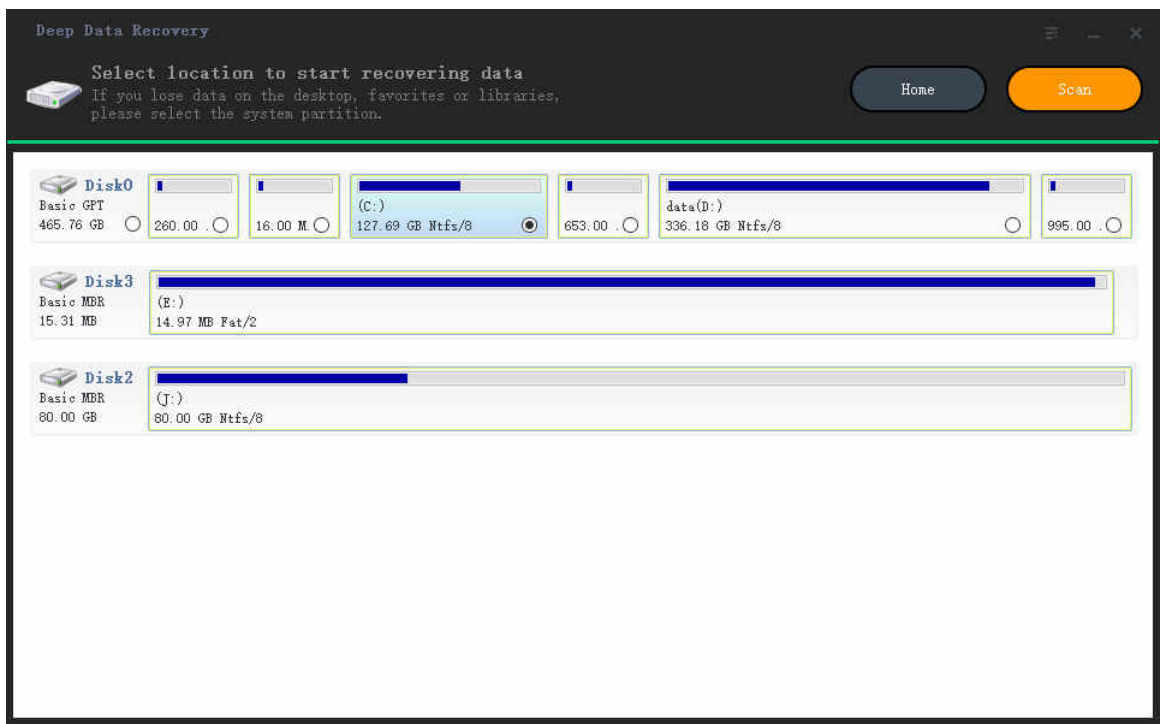
**Step 1. Select file types and click "Next" to start**

Launch Deep Data Recovery. Select file types and click "Next" to start.



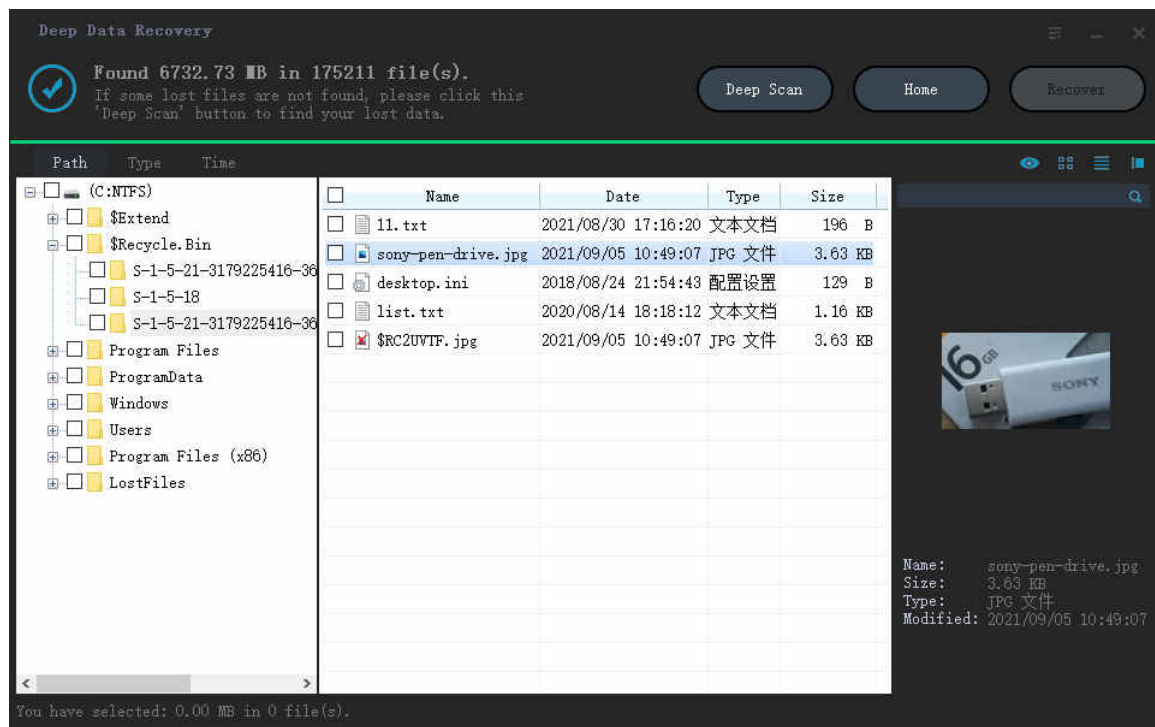
**Step 2. Scan the hard drive partition**

Select the drive on your hard disk where you lost or deleted files. Click "Scan" and let Qiling data recovery software scan for all lost data and files on the selected drive.



### Step 3. Check the results

When the scan completes, you can apply the "Filter" feature or click the "Search files or folders" option to find the lost files on the hard drive.



### Step 4. Restore lost hard drive data

Select wanted files that you lost on the drive and click "Recover" to save them to another location.

**Remember to** save the recovered files to another secure location other than the inaccessible device with CRC error.

## Part 2. How to Fix Cyclic Redundancy Check Data Error - 5 Ways

Here we collected 5 practical methods that can fully help you fix the "Data error (cyclic redundancy check)" issue and make your storage devices function normally again.

### Fix 1. Fix Cyclic Redundancy Check Data Error via CHKDSK

The CHKDSK utility in Windows scans and repairs file system corruption and bad sectors that caused the cyclic redundancy check data error on your device.

#### ⚠ Warning

Running chkdsk can hopefully fix the cyclic redundancy check error, however, it can also result in total data loss. So, perform data recovery in advance, and then continue with the CMD method.

**Step 1.** Press Windows + S keys, type **cmd** in the Search box.

**Step 2.** Right-click Command Prompt, and select "Run as Administrator".

**Step 3.** Type **chkdsk F: /f** or **chkdsk F: /f /r /x** in Diskpart and hit Enter.

Replace 'F:' with the drive letter of your hard drive with the Cyclic Redundancy Check error.

```
Administrator: Command Prompt - CHKDSK F: /f /r /x
Microsoft Windows [Version 10.0.17134.1184]
(c) 2018 Microsoft Corporation. All rights reserved.

C:\Windows\system32>CHKDSK F: /f /r /x

The type of the file system is NTFS.
Volume dismounted. All opened handles to this volume are now invalid.
Volume label is .

Stage 1: Examining basic file system structure ...
 76544 file records processed.
File verification completed.
 2 large file records processed.
 0 bad file records processed.

Stage 2: Examining file name linkage ...
 5 reparse records processed.
 91736 index entries processed.
Index verification completed.
 0 unindexed files scanned.
```

**Step 4.** When the scan completes, type **exit** and hit Enter to close the window.

After this, you can restart the computer and see if your device is accessible and workable now.

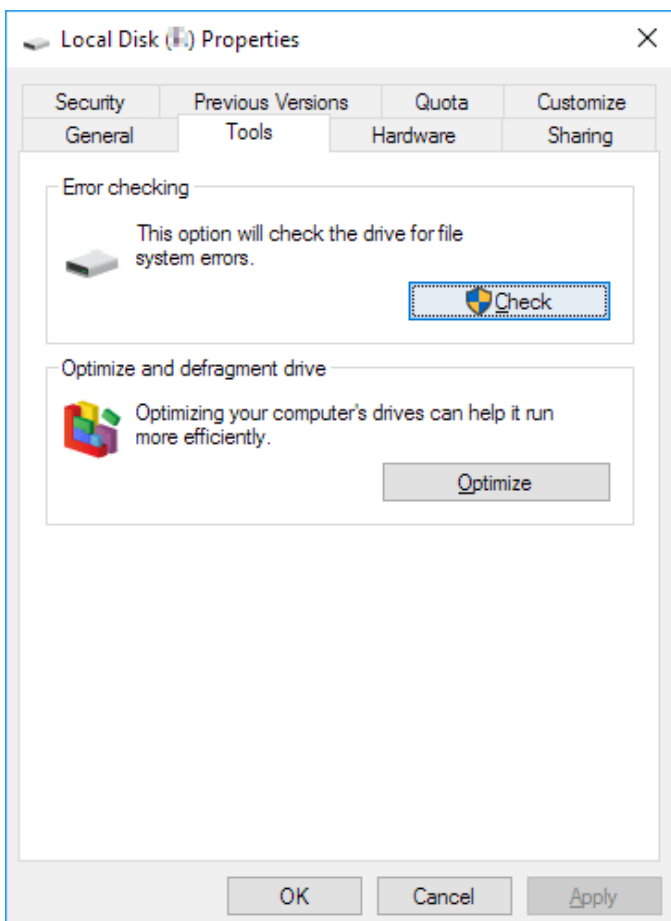
## Fix 2. Fix CRC Data Error Using Disk Check

The Disk Check utility in Windows can also help to fix file system errors that caused your device inaccessible with a Cyclic Redundancy Check error. Here are the steps that you can apply to fix the CRC error from your drive:

**Step 1.** On Windows File Explorer, right-click the inaccessible hard drive or device, choose "Properties".

**Step 2.** Under the Tools tab, click "Check" in the Error-checking section.

**Step 3.** Choose "Scan drive" or "Repair drive" if errors were found.



When the scanning finishes, restart the computer and check if you can reopen the device and use the saved data again.

### Fix 3. Remove CRC Error with System File Checker

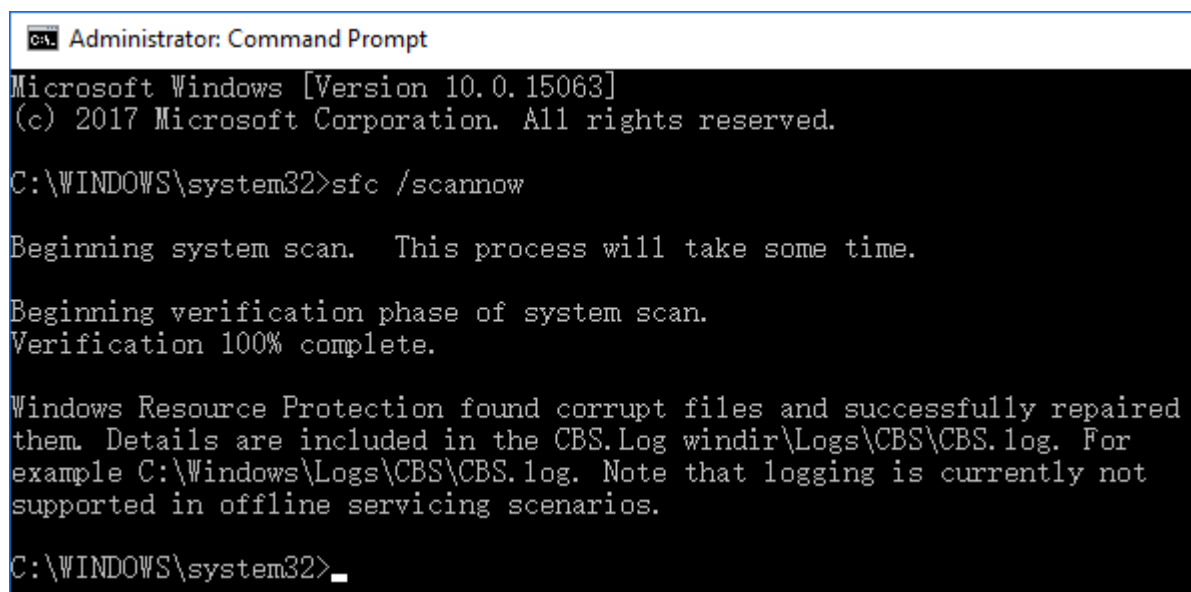
The other Windows built-in tool - System File Checker sometimes also works to repair the missing or corrupted system files on your computer. You can also apply it to fix the cyclic redundancy error resulted from system file corruption.

**Step 1.** Press Windows + R keys, type **cmd** in the Run dialog, and click "OK".

**Step 2.** Type **DISM.exe /Online /Cleanup-image /Restorehealth** and hit Enter.

This will make a Windows image to protect your data.

**Step 3.** When the DISM command completes, type **sfc /scannow** and hit Enter.



```
Administrator: Command Prompt
Microsoft Windows [Version 10.0.15063]
(c) 2017 Microsoft Corporation. All rights reserved.

C:\WINDOWS\system32>sfc /scannow

Beginning system scan. This process will take some time.

Beginning verification phase of system scan.
Verification 100% complete.

Windows Resource Protection found corrupt files and successfully repaired
them. Details are included in the CBS.Log windir\Logs\CBS\CBS.log. For
example C:\Windows\Logs\CBS\CBS.log. Note that logging is currently not
supported in offline servicing scenarios.

C:\WINDOWS\system32>_
```

**Step 4.** Wait for the process to completes, then type **exit** and hit Enter to close it.

After this, restart your computer and then you can reopen the device and make use of the saved data again.

### Fix 4. Format to Fix CRC Error on RAW/Inaccessible Device

If your device became RAW or still has CRC device error after trying the above fixes, the last effective DIY method you can try is to format the drive. By resetting the file system to a readable format, the CRC error can be fixed. Here are the steps for you to go:

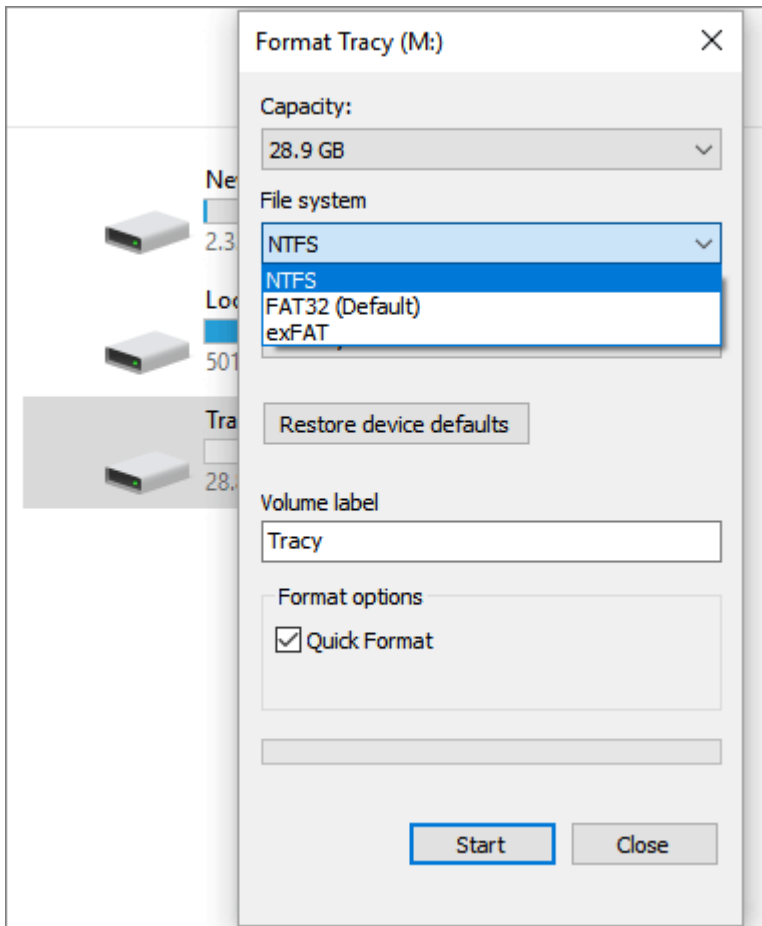
**Step 1.** Press "Windows key + E" to open Windows Explorer.

**Step 2.** Right-click on the problematic device with CRC error and select "Format".

**Step 3.** Select a suitable file system - NTFS or FAT32 for your device.

(NTFS for hard drive or external device; FAT32 for SD card for USB - 32GB or smaller.)

**Step 4.** Check "Quick Format" and click "Start".



#### Fix 5. Send for Manual Repair

If none of the fixes works, you can send your hard drive for a repair at a local disk repair center or the device manufacturer's after-sales service center.

Here we have an alternative solution for you - Qiling Manual Data Recovery Service. Our professional tech support team will help you remove "Data error cyclic redundancy check" error from your device and fix the drive work again remotely.

Consult with Qiling Data Recovery Experts for one-on-one manual recovery service. We could offer the following services after FREE diagnosis:

- Repair corrupted RAID structure, unbootable Windows OS and corrupted virtual disk file (.vmdk, .vhd, .vhdx, etc.)
- Recover/repair lost partition and re-partitioned drive
- Unformat hard drive and repair raw drive (BitLocker encrypted drive)
- Fix disks that become GPT-protected partitions

Hope as least one of the solutions above can help you fix the error.

#### What Causes Data Error Cyclic Redundancy Check Error

The "Data Error Cyclic Redundancy Check" error could be caused by the following reasons:

- A corrupted [file system](#) on storage devices
- Registry corruption
- Interrupted file transferring process
- Misconfiguration in files and storage devices
- Unsuccessful program installation
- Misconfigured system files
- [Virus or malware infection](#)

Generally, when you receive the error message 'data error (cyclic redundancy check)', there is something wrong with the files or the hard drive. Therefore, it's important that you recover saved data from the problematic device first before you start fixing the issue.

### **Stop Using Your Drive, Recover Data, and Fix CRC Error Now**

On this page, we offered a complete guide with 5 practical ways to show you how to fix this issue without losing any data. We also explained the causes of this error.

If you have precious files on your drive, remember to run Qiling data recovery software to scan and find your file first. Then run the fixes on this page to remove this error and make your drive work normally again.

- [Free Download](#)
- Windows 11/10/8/7, 100% Secure

Don't forget to create a full backup of all your important data. Stop using your device when the CRC error pops up, follow the solutions on this page to recover data and fix your drive to work again.